

À des fins de recherche uniquement

Anticorps Monoclonal anti-NPHP5,IQCB1



Numéro de catalogue:68404-1-Ig

Informations de base

Numéro de catalogue: 68404-1-Ig	Numéro d'acquisition GenBank: BC005806	Méthode de purification: Purification par protéine A
Taille: 150ul , Concentration: 1000 µg/ml by Nanodrop;	Identification du gène (NCBI): 9657	CloneNo.: 2A9F4
Hôte: Mouse	Nom complet: IQ motif containing B1	Dilutions recommandées: WB 1:2000-1:10000
Isotype: IgG2a	MW calculé: 598 aa, 69 kDa	
Immunogen Catalog Number: AG8203	MW observés: 69 kDa	

Applications

Applications testées: WB, ELISA	Contrôles positifs:
Spécificité de l'espèce: Humain	WB : cellules HaCaT, cellules A431, cellules COLO 320, cellules Daudi, cellules HEK-293, cellules HL-60, cellules MDA-MB-468

Informations générales

IQCB1, also known as NPHP5, is a nephrocystin protein that interacts with calmodulin and the retinitis pigmentosa GTPase regulator protein. It has a central coiled-coil region and two calmodulin-binding IQ domains. Localized to the primary cilia of renal epithelial cells and connecting cilia of photoreceptor cells, IQCB1 is thought to play a role in ciliary function. Mutations in this gene result in Senior-Loken syndrome type 5, a juvenile disorder characterized by defects in the waste filtering system of the kidney, as well as retinal degradation.

Stockage

Stockage:
Stocker à -20°C. Stable pendant un an après l'expédition.
Tampon de stockage:
PBS avec azoture de sodium à 0,02 % et glycérol à 50 % pH 7,3
L'aliquotage n'est pas nécessaire pour le stockage à -20C

*** Les 20ul contiennent 0,1% de BSA.

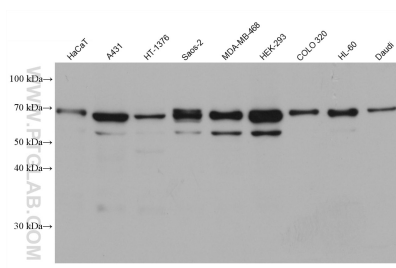
For technical support and original validation data for this product please contact:

T: 1 (888) 4PTGLAB (1-888-478-4522) (toll free
in USA), or 1(312) 455-8498 (outside USA)

E: proteintech@ptglab.com
W: ptglab.com

This product is exclusively available under Proteintech Group brand and is not available to purchase from any other manufacturer.

Données de validation sélectionnées



Various lysates were subjected to SDS PAGE followed by western blot with 68404-1-Ig (NPHP5,IQCB1 antibody) at dilution of 1:5000 incubated at room temperature for 1.5 hours.