

À des fins de recherche uniquement

Anticorps Monoclonal anti-SYAP1

Numéro de catalogue: 68410-1-Ig



Informations de base

Numéro de catalogue: 68410-1-Ig	Numéro d'acquisition GenBank: BC014657	Méthode de purification: Purification par protéine A
Taille: 150ul , Concentration: 1000 µg/ml by Nanodrop;	Identification du gène (NCBI): 94056	CloneNo.: 2E12A5
Hôte: Mouse	Nom complet: synapse associated protein 1, SAP47 homolog (Drosophila)	Dilutions recommandées: WB 1:5000-1:50000 IP 0.5-4.0 ug for IP and 1:1000-1:4000 for WB
Isotype: IgG2b	MW calculé 352 aa, 40 kDa	
Immunogen Catalog Number: AG9626	MW observés: 50-55 kDa	

Applications

Applications testées:
IP, WB, ELISA

Spécificité de l'espèce:
Humain, rat, souris

Contrôles positifs:

WB : cellules U2OS, cellules A549, cellules HeLa, cellules HSC-T6, cellules Jurkat, cellules K-562, cellules LNCaP, cellules NIH/3T3

IP : cellules LO2,

Informations générales

SYAP1(Synapse-associated protein 1) is a human homologue of the Drosophila SAP47 (synapse associated protein), which is recognized by a monoclonal antibody that selectively stain synaptic terminals. This protein is a 352 amino acid protein that is ubiquitously expressed in adult tissues. SYAP1 contains one BSD domain which is an approximately 60 amino acid long protein domain named after the BTF2-like transcription factors, Synapse-associated proteins and DOS2-like proteins in which it is found.

Stockage

Stockage:

Stocker à -20°C. Stable pendant un an après l'expédition.

Tampon de stockage:

PBS avec azote de sodium à 0,02 % et glycérol à 50 % pH 7,3

L'aliquotage n'est pas nécessaire pour le stockage à -20C

*** Les 20ul contiennent 0,1% de BSA.

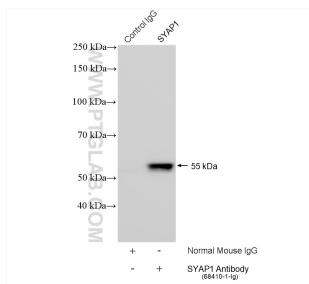
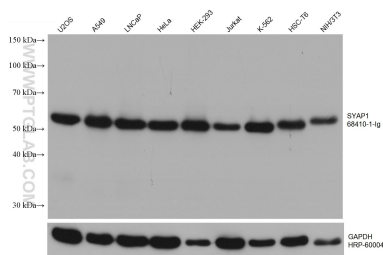
For technical support and original validation data for this product please contact:

T: 1 (888) 4PTGLAB (1-888-478-4522) (toll free in USA), or 1(312) 455-8498 (outside USA)

E: proteintech@ptglab.com
W: ptglab.com

This product is exclusively available under Proteintech Group brand and is not available to purchase from any other manufacturer.

Données de validation sélectionnées



Various lysates were subjected to SDS PAGE followed by western blot with 68410-1-Ig (SYAP1 antibody) at dilution of 1:10000 incubated at room temperature for 1.5 hours. The membrane was stripped and reblotted with HRP-conjugated GAPDH Monoclonal antibody (HRP-60004) as loading control.

IP result of anti-SYAP1(IP:68410-1-Ig, 4ug; Detection:68410-1-Ig 1:2000) with L02 cells lysate 3080 ug.