

À des fins de recherche uniquement

Anticorps Monoclonal anti-MPI

Numéro de catalogue: 68417-1-Ig



Informations de base

Numéro de catalogue: 68417-1-Ig	Numéro d'acquisition GenBank: BC046357	Méthode de purification: Purification par protéine G
Taille: 150ul, Concentration: 1000 µg/ml by Nanodrop;	Identification du gène (NCBI): 4351	CloneNo.: 3B10A6
Hôte: Mouse	Nom complet: mannose phosphate isomerase	Dilutions recommandées: WB 1:5000-1:50000 IP 0.5-4.0 ug for IP and 1:1000-1:4000 for WB
Isotype: IgG1	MW calculé 47 kDa	IF 1:500-1:2000
Immunogen Catalog Number: AG5475	MW observés: 40-47 kDa	

Applications

Applications testées:
IF, IP, WB, ELISA

Spécificité de l'espèce:
Humain, porc, rat, souris

Contrôles positifs:

WB: cellules MCF-7, cellules A549, cellules Jurkat, cellules K-562, cellules LNCaP, tissu cérébral de porc, tissu cérébral de rat

IP: cellules Jurkat,

IF: cellules NIH/3T3,

Informations générales

MPI (mannose-6-phosphate isomerase) is also named as PMI 1 and belongs to the mannose-6-phosphate isomerase type 1 family. It is a zinc metalloenzyme that catalyzes the reversible isomerization of mannose-6-phosphate and fructose-6-phosphate. MPI plays a critical role in maintaining the supply of D-mannose derivatives, which are required for most glycosylation reactions. This protein has 2 isoforms produced by alternative splicing.

Stockage

Stockage:
Stocker à -20°C. Stable pendant un an après l'expédition.

Tampon de stockage:
PBS avec azoture de sodium à 0,02 % et glycérol à 50 % pH 7,3
L'aliquotage n'est pas nécessaire pour le stockage à -20C

***** Les 20ul contiennent 0,1% de BSA.**

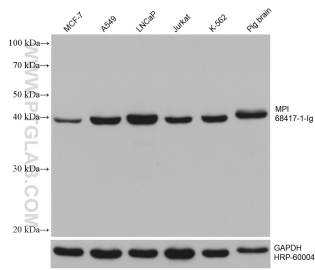
For technical support and original validation data for this product please contact:

T: 1 (888) 4PTGLAB (1-888-478-4522) (toll free
in USA), or 1(312) 455-8498 (outside USA)

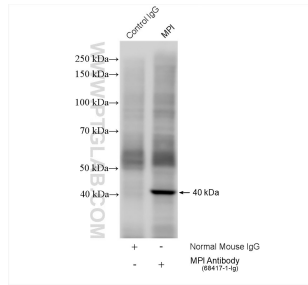
E: proteintech@ptglab.com
W: ptglab.com

This product is exclusively available under Proteintech Group brand and is not available to purchase from any other manufacturer.

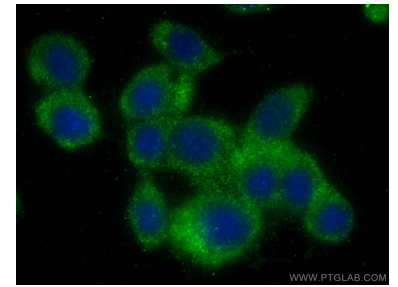
Données de validation sélectionnées



Various lysates were subjected to SDS PAGE followed by western blot with 68417-1-Ig (MPI antibody) at dilution of 1:10000 incubated at room temperature for 1.5 hours. The membrane was stripped and reblotted with HRP-conjugated GAPDH Monoclonal antibody (HRP-60004) as loading control.



IP result of anti-MPI (IP:68417-1-Ig, 4ug; Detection:68417-1-Ig 1:2000) with Jurkat cells lysate 2280 ug.



Immunofluorescent analysis of (-20°C Methanol) fixed NIH/3T3 cells using MPI antibody (68417-1-Ig, Clone: 3B10A6) at dilution of 1:1000 and CoraLite@488-Conjugated AffiniPure Goat Anti-Mouse IgG(H+L).