

À des fins de recherche uniquement

Anticorps Monoclonal anti-SSSCA1

Numéro de catalogue: 68423-1-Ig



Informations de base

Numéro de catalogue: 68423-1-Ig	Numéro d'acquisition GenBank: BC014791	Méthode de purification: Purification par protéine G
Taille: 150ul , Concentration: 1000 µg/ml by Nanodrop;	Identification du gène (NCBI): 10534	CloneNo.: 1D2E8
Hôte: Mouse	Nom complet: Sjogren syndrome/scleroderma autoantigen 1	Dilutions recommandées: WB 1:2000-1:10000 IF 1:200-1:800
Isotype: IgG1	MW calculé 199 aa, 21 kDa	
Immunogen Catalog Number: AG16783	MW observés: 23 kDa	

Applications

Applications testées:
IF, WB, ELISA

Spécificité de l'espèce:
Humain, rat, souris

Contrôles positifs:

WB : cellules A549, cellules HEK-293, cellules HeLa,
cellules HSC-T6, cellules Jurkat, cellules K-562,
cellules LNCaP, cellules MCF-7, cellules NIH/3T3

IF : cellules HeLa,

Informations générales

SSSCA1, also named as Autoantigen p27, is centromere-associated protein. It may induce anti-centromere antibodies. SSSCA1 plays a role in mitosis. It's involved in Sjogren syndrome/scleroderma. The calculated MW of SSSCA1 is 21.5 kDa (native form), with modification the MW is about 23-27 kDa.

Stockage

Stockage:
Stocker à -20°C. Stable pendant un an après l'expédition.

Tampon de stockage:
PBS avec azoture de sodium à 0,02 % et glycérol à 50 % pH 7,3
L'aliquotage n'est pas nécessaire pour le stockage à -20C

*** Les 20ul contiennent 0,1% de BSA.

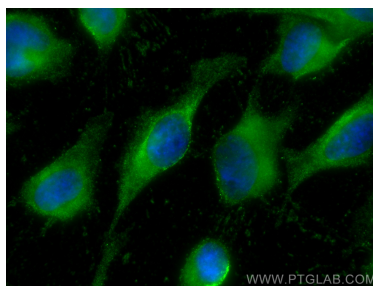
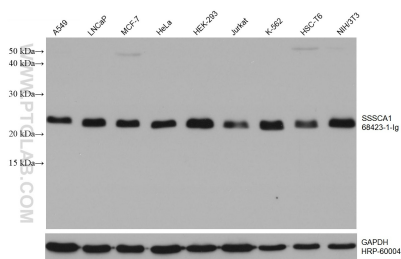
For technical support and original validation data for this product please contact:

T: 1 (888) 4PTGLAB (1-888-478-4522) (toll free
in USA), or 1(312) 455-8498 (outside USA)

E: proteintech@ptglab.com
W: ptglab.com

This product is exclusively available under Proteintech Group brand and is not available to purchase from any other manufacturer.

Données de validation sélectionnées



Various lysates were subjected to SDS PAGE followed by western blot with 68423-1-Ig (SSSCA1 antibody) at dilution of 1:5000 incubated at room temperature for 1.5 hours. The membrane was stripped and reblotted with HRP-conjugated GAPDH Monoclonal antibody (HRP-60004) as loading control.

Immunofluorescent analysis of (-20°C Methanol) fixed HeLa cells using SSSCA1 antibody (68423-1-Ig, Clone: 1D2E8) at dilution of 1:400 and CoraLite®488-Conjugated AffiniPure Goat Anti-Mouse IgG(H+L).