

À des fins de recherche uniquement

# Anticorps Monoclonal anti-BHLHE40

Numéro de catalogue: 68435-1-Ig



## Informations de base

Numéro de catalogue: 68435-1-Ig	Numéro d'acquisition GenBank: BC082238	Méthode de purification: Purification par protéine A
Taille: 150ul , Concentration: 1000 µg/ml by Nanodrop;	Identification du gène (NCBI): 8553	CloneNo.: 1A3E1
Hôte: Mouse	Nom complet: basic helix-loop-helix family, member e40	Dilutions recommandées: WB 1:5000-1:50000
Isotype: IgG2a	MW calculé 412 aa, 46 kDa	
Immunogen Catalog Number: AG12236	MW observés: 46-50 kDa	

## Applications

Applications testées:  
WB, ELISA  
Spécificité de l'espèce:  
Humain

### Contrôles positifs:

WB : Calu-3 cells, cellules A549, cellules HCT 116,  
cellules HeLa, cellules K-562, cellules MDA-MB-468,  
cellules PC-3

## Informations générales

BHLHE40 (Basic Helix-Loop-Helix Family Member E40), also known as BHLHB2, STRA13, DEC1, or SHARP2, is a member of the basic helix-loop-helix (bHLH) protein family, a large superfamily of transcriptional regulators expressed in many organisms. BHLHE40 is known to regulate a wide variety of essential cellular processes, including cell cycle, cellular proliferation, programmed cell death, cellular development and differentiation, as well as circadian rhythms (PMID: 34551158). It is reported that BHLHE40 is overexpressed in gastric, breast, and brain tumors; and downregulated in colorectal, esophageal, pancreatic and lung cancer (PMID: 32577154).

## Stockage

Stockage:  
Stocker à -20°C. Stable pendant un an après l'expédition.  
Tampon de stockage:  
PBS avec azoture de sodium à 0,02 % et glycérol à 50 % pH 7,3  
L'aliquotage n'est pas nécessaire pour le stockage à -20C

\*\*\* Les 20ul contiennent 0,1% de BSA.

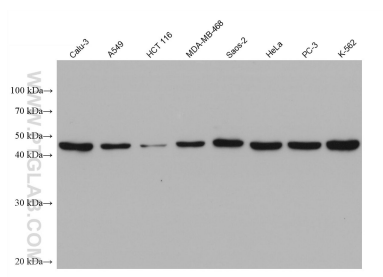
For technical support and original validation data for this product please contact:

T: 1 (888) 4PTGLAB (1-888-478-4522) (toll free  
in USA), or 1(312) 455-8498 (outside USA)

E: [proteintech@ptglab.com](mailto:proteintech@ptglab.com)  
W: [ptglab.com](http://ptglab.com)

This product is exclusively available under Proteintech Group brand and is not available to purchase from any other manufacturer.

## Données de validation sélectionnées



Various lysates were subjected to SDS PAGE followed by western blot with 68435-1-Ig (BHLHE40 antibody) at dilution of 1:10000 incubated at room temperature for 1.5 hours.