

À des fins de recherche uniquement

Anticorps Monoclonal anti-ATP6V1A

Numéro de catalogue: 68440-1-Ig



Informations de base

Numéro de catalogue: 68440-1-Ig	Numéro d'acquisition GenBank: BC013138	Méthode de purification: Purification par protéine A
Taille: 150ul , Concentration: 1000 µg/ml by Nanodrop;	Identification du gène (NCBI): 523	CloneNo.: 1C5G2
Hôte: Mouse	Nom complet: ATPase, H ⁺ transporting, lysosomal 70kDa, V1 subunit A	Dilutions recommandées: WB 1:5000-1:40000
Isotype: IgG2a	MW calculé 617 aa, 68 kDa	
Immunogen Catalog Number: AG10820	MW observés: 68 kDa	

Applications

Applications testées:
WB, ELISA

Spécificité de l'espèce:
Humain, Lapin, porc, rat, souris

Contrôles positifs:
WB : cellules HeLa, cellules HSC-T6, cellules Jurkat, cellules K-562, cellules NIH/3T3, tissu cérébral de lapin, tissu cérébral de porc, tissu cérébral de rat, tissu cérébral de souris

Informations générales

The vacuolar-type H(+)-ATPase (V-ATPase) is responsible for the acidification of endosomes, lysosomes, and other intracellular organelles. It is also involved in hydrogen ion transport across the plasma membrane into the extracellular space. The V-ATPase is a multisubunit complex with cytosolic and transmembrane domains. The cytosolic catalytic domain consists of 3 A subunits and 3 B subunits, which bind and hydrolyze ATP, as well as regulatory accessory subunits. ATP6V1A is V-type proton ATPase catalytic subunit A.

Stockage

Stockage:
Stocker à -20°C. Stable pendant un an après l'expédition.

Tampon de stockage:
PBS avec azoture de sodium à 0,02 % et glycérol à 50 % pH 7,3
L'aliquotage n'est pas nécessaire pour le stockage à -20C

*** Les 20ul contiennent 0,1% de BSA.

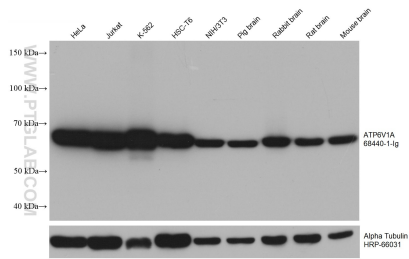
For technical support and original validation data for this product please contact:

T: 1 (888) 4PTGLAB (1-888-478-4522) (toll free
in USA), or 1(312) 455-8498 (outside USA)

E: proteintech@ptglab.com
W: ptglab.com

This product is exclusively available under Proteintech Group brand and is not available to purchase from any other manufacturer.

Données de validation sélectionnées



Various lysates were subjected to SDS PAGE followed by western blot with 68440-1-Ig (ATP6V1A antibody) at dilution of 1:20000 incubated at room temperature for 1.5 hours. The membrane was stripped and reblotted with HRP-conjugated Alpha Tubulin Monoclonal antibody (HRP-66031) as loading control.