

À des fins de recherche uniquement

Anticorps Monoclonal anti-SQRDL

Numéro de catalogue: 68459-1-Ig



Informations de base

Numéro de catalogue:	68459-1-Ig	Numéro d'acquisition GenBank:	BC016836	Méthode de purification:	Purification par protéine A
Taille:	150ul , Concentration: 1000 µg/ml by Nanodrop;	Identification du gène (NCBI):	58472	CloneNo.:	1B4E3
Hôte:	Mouse	Nom complet:	sulfide quinone reductase-like (yeast)	Dilutions recommandées:	WB 1:5000-1:20000
Isotype:	IgG2b	MW calculé:	450 aa, 50 kDa		
Immunogen Catalog Number:	AG10762	MW observés:	50 kDa		

Applications

Applications testées:
WB, ELISA

Spécificité de l'espèce:
Humain, porc

Contrôles positifs:

WB : cellules A549, cellules HeLa, cellules HepG2, cellules HT-29, cellules hTERT-RPE1, cellules THP-1, tissu hépatique de porc

Informations générales

SQRDL(Sulfide:quinone oxidoreductase, mitochondrial) catalyzes the oxidation of hydrogen sulfide, with the help of a quinone. Although the SQRDL precursor protein displays a molecular weight of 50 kDa, a prominent band at about 46 kDa is detected by western blot. This discrepancy reflects the cleavage of an N-terminal targeting sequence of 4 kDa during the import of the protein into the mitochondria (PMID:22067608). SQRDL is one of the enzymes involved in H₂S signaling in a discrete population of neurons, oligodendrocytes, and endothelial cells.

Stockage

Stockage:

Stocker à -20°C. Stable pendant un an après l'expédition.

Tampon de stockage:

PBS avec azoture de sodium à 0,02 % et glycérol à 50 % pH 7,3

L'aliquotage n'est pas nécessaire pour le stockage à -20C

*** Les 20ul contiennent 0,1% de BSA.

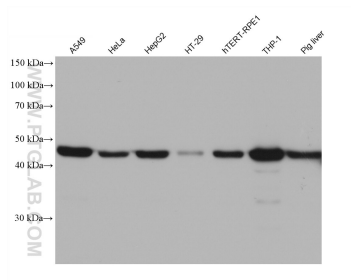
For technical support and original validation data for this product please contact:

T: 1 (888) 4PTGLAB (1-888-478-4522) (toll free in USA), or 1(312) 455-8498 (outside USA)

E: proteintech@ptglab.com
W: ptglab.com

This product is exclusively available under Proteintech Group brand and is not available to purchase from any other manufacturer.

Données de validation sélectionnées



Various lysates were subjected to SDS PAGE followed by western blot with 68459-1-Ig (SQRDL antibody) at dilution of 1:20000 incubated at room temperature for 1.5 hours.