

À des fins de recherche uniquement

# Anticorps Recombinant de lapin anti-FITC



Numéro de catalogue: 80003-1-RR

1 Publications

## Informations de base

Numéro de catalogue:

80003-1-RR

Taille:

100ul , Concentration: 500 µg/ml by Nanodrop and 500 µg/ml by Bradford method using BSA as the standard;

Hôte:

Lapin

Isotype:

IgG

Numéro d'acquisition GenBank:

Identification du gène (NCBI):

Nom complet:

Méthode de purification:

Purification par protéine A

CloneNo.:

1B2

Dilutions recommandées:

WB 1:2000-1:10000

## Applications

Applications testées:

WB, ELISA

Demandes citées:

IP

Spécificité de l'espèce:

FITC conjugated

Espèces citées:

Humain

Contrôles positifs:

WB : FITC conjugated antibody,

## Informations générales

Fluorescein isothiocyanate (FITC) is a derivative of fluorescein used in wide-ranging applications. It is the original fluorescein molecule functionalized with an isothiocyanate reactive group ( $-N=C=S$ ), replacing a hydrogen atom on the bottom ring of the structure. It is typically available as a mixture of isomers, fluorescein 5-isothiocyanate (5-FITC) and fluorescein 6-isothiocyanate (6-FITC). FITC is reactive towards nucleophiles including amine and sulfhydryl groups on proteins. CAS number of FITC: 27072-45-3 (mixture); 3326-32-7, 5-isomer; 18861-78-4 (6-isomer). This rabbit recombinant antibody detects the FITC only. This antibody can be coated in the plate to capture the FITC conjugated protein or antibody.

## Publications notables

Autrice	Pubmed ID	Journal	Application
Jialiang Luo	36029544	Biomed Pharmacother	IP

## Stockage

Stockage:

Stocker à  $-20^{\circ}\text{C}$ . Stable pendant un an après l'expédition.

Tampon de stockage:

PBS avec azoture de sodium à 0,02 % et glycérol à 50 % pH 7,3

L'aliquotage n'est pas nécessaire pour le stockage à  $-20^{\circ}\text{C}$

\*\*\* Les 20ul contiennent 0,1% de BSA.

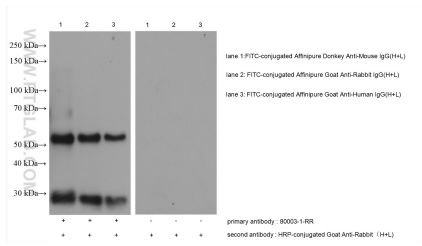
For technical support and original validation data for this product please contact:

T: 1 (888) 4PTGLAB (1-888-478-4522) (toll free in USA), or 1(312) 455-8498 (outside USA)

E: [proteintech@ptglab.com](mailto:proteintech@ptglab.com)  
W: [ptglab.com](http://ptglab.com)

This product is exclusively available under Proteintech Group brand and is not available to purchase from any other manufacturer.

## Données de validation sélectionnées



FITC-conjugated secondary antibodies were subjected to SDS PAGE followed by western blot with 80003-1-RR (FITC antibody) at dilution of 1:5000 incubated at room temperature for 1.5 hours.