

À des fins de recherche uniquement

# Anticorps Recombinant de lapin anti-GST Tag



Numéro de catalogue: 80006-1-RR

## Informations de base

Numéro de catalogue: 80006-1-RR	Numéro d'acquisition GenBank: FN315687	Méthode de purification: Purification par protéine A
Taille: 100ul , Concentration: 1000 µg/ml by Nanodrop;	Identification du gène (NCBI): Nom complet:	CloneNo.: 9B24
Hôte: Lapin	MW calculé 26 kDa	Dilutions recommandées: WB 1:5000-1:50000
Isotype: IgG		
Immunogen Catalog Number: AG0040		

## Applications

Applications testées: WB, ELISA	Contrôles positifs: WB : Protéine recombinante,
Spécificité de l'espèce: Protéine recombinante	

## Informations générales

GST (Glutathione S-Transferase) is a widely used protein tag encoded by the *Schistosoma japonicum*. GST provides both an easily detectable tag and a simple purification process with little effect on the biological function of the protein of interest. Antibodies to GST are useful for checking protein expression both in plaques and on western blots as well as for immunoaffinity purification of proteins expressed in cells. This antibody is a Rabbit recombinant antibody to GST tag.

## Stockage

Stockage:  
Stocker à -20 °C.  
Tampon de stockage:  
PBS avec azoture de sodium à 0,02 % et glycérol à 50 % pH 7,3  
L'aliquotage n'est pas nécessaire pour le stockage à -20C

**\*\*\* Les 20ul contiennent 0,1% de BSA.**

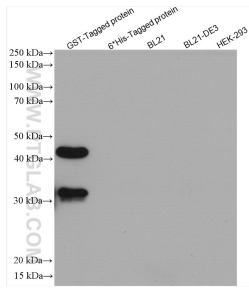
For technical support and original validation data for this product please contact:

T: 1 (888) 4PTGLAB (1-888-478-4522) (toll free  
in USA), or 1(312) 455-8498 (outside USA)

E: [proteintech@ptglab.com](mailto:proteintech@ptglab.com)  
W: [ptglab.com](http://ptglab.com)

This product is exclusively available under Proteintech Group brand and is not available to purchase from any other manufacturer.

## Données de validation sélectionnées



GST tagged protein and other negative samples were subjected to SDS PAGE followed by western blot with 80006-1-RR (GST Tag antibody) at dilution of 1:10000 incubated at room temperature for 1.5 hours.