

À des fins de recherche uniquement

Anticorps Recombinant de lapin anti-smooth muscle actin specific



Numéro de catalogue: 80008-1-RR

Phare

8 Publications

Informations de base

Numéro de catalogue: 80008-1-RR	Numéro d'acquisition GenBank: NML_001613	Méthode de purification: Purification par protéine A
Taille: 100ul , Concentration: 260 µg/ml by Nanodrop;	Identification du gène (NCBI): 59	CloneNo.: 5H7
Hôte: Lapin	Nom complet: actin, alpha 2, smooth muscle, aorta	Dilutions recommandées: WB 1:20000-1:100000 IHC 1:2500-1:10000 IF 1:50-1:500
Isotype: IgG	MW calculé: 42 kDa	
	MW observés: 42 kDa	

Applications

Applications testées:

FC, IF, IHC, WB, ELISA

Demandes citées:

IF, IHC, WB

Spécificité de l'espèce:

Humain, poisson-zèbre, porc, poulet, rat, souris

Espèces citées:

Humain, rat, souris

Remarque-IHC: il est suggéré de démasquer l'antigène avec un tampon de TE buffer pH 9,0; (*) À défaut, 'le démasquage de l'antigène peut être 'effectué avec un tampon citrate pH 6,0.

Contrôles positifs:

WB : tissu de côlon de souris, cellules A549, côlon de porc, estomac de porc, estomac de rat, tissu de côlon de rat, tissu de jabot de poulet, tissu de poisson-zèbre, tissu veineux de porc

IHC : tissu hépatique humain, tissu cardiaque humain, tissu d'appendicite humaine, tissu de côlon de rat, tissu de côlon de souris, tissu de côlon humain

IF : tissu cardiaque de souris, tissu embryonnaire de souris

Informations générales

ACTA2 (also known as α -smooth muscle actin or α -SMA) belongs to the actin family. Actins are highly conserved proteins that are involved in various types of cell motility and are ubiquitously expressed in all eukaryotic cells. ACTA2 is primarily expressed in vascular smooth muscle and anti-ACTA2 is commonly used to marker smooth muscle cells.

Publications notables

Autrice	Pubmed ID	Journal	Application
Yingying Luo	36115414	Exp Cell Res	WB
Jingjing Liu	35719213	Drug Des Devel Ther	WB,IHC,IF
Yue Zhang	35149188	Pharmacol Res	WB,IHC

Stockage

Stockage:

Stocker à -20°C. Stable pendant un an après l'expédition.

Tampon de stockage:

PBS avec azoture de sodium à 0,02 % et glycérol à 50 % pH 7,3

L'aliquotage n'est pas nécessaire pour le stockage à -20C

*** Les 20ul contiennent 0,1% de BSA.

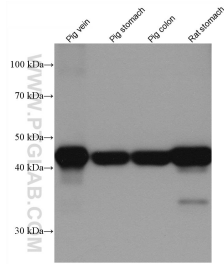
For technical support and original validation data for this product please contact:

T: 1 (888) 4PTGLAB (1-888-478-4522) (toll free in USA), or 1(312) 455-8498 (outside USA)

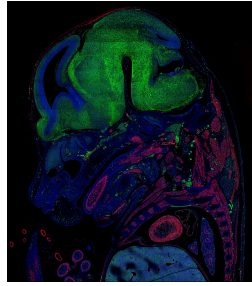
E: proteintech@ptglab.com
W: ptglab.com

This product is exclusively available under Proteintech Group brand and is not available to purchase from any other manufacturer.

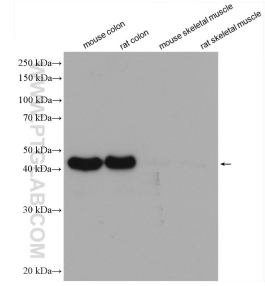
Données de validation sélectionnées



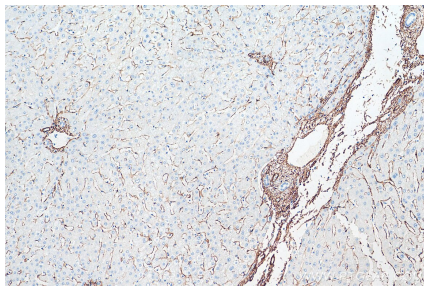
Various lysates were subjected to SDS PAGE followed by western blot with 80008-1-RR (smooth muscle actin specific antibody) at dilution of 1:100000 incubated at room temperature for 1.5 hours.



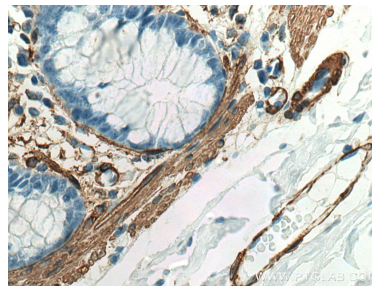
E14.5 FFPE mouse embryo section stained for smooth muscle actin (red, Cat. No 80008-1-RR) and alpha tubulin (green, Cat. CL488-66031). The alpha tubulin was conjugated to CoraLite-488 fluorescent dye. In red, you can see muscle tissue clearly stained including the tongue, heart, and arteries. Nerves and neurons are stained green since they are rich in tubulin. Image credit: @Immunofluorescence on Instagram



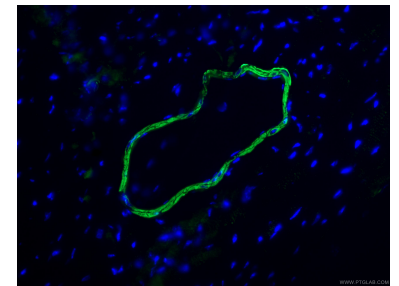
Various lysates were subjected to SDS PAGE followed by western blot with 80008-1-RR (smooth muscle actin specific antibody) at dilution of 1:100000 incubated at room temperature for 1.5 hours.



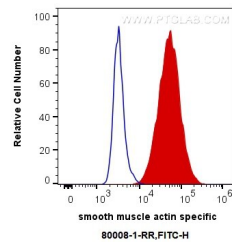
Immunohistochemical analysis of paraffin-embedded human liver tissue slide using 80008-1-RR (smooth muscle actin specific antibody) at dilution of 1:5000 (under 10x lens). Heat mediated antigen retrieval with Tris-EDTA buffer (pH 9.0).



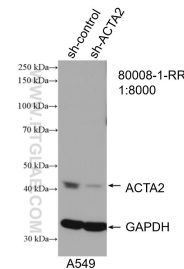
Immunohistochemical analysis of paraffin-embedded human colon tissue slide using 80008-1-RR (a-SMA specific antibody) at dilution of 1:3000 (under 40x lens). Heat mediated antigen retrieval with Tris-EDTA buffer (pH 9.0).



Immunofluorescent analysis of (4% PFA) fixed mouse heart tissue using 80008-1-RR (smooth muscle actin specific antibody), at dilution of 1:200 and CoraLite®488-Conjugated AffiniPure Goat Anti-Rabbit IgG(H+L).



1X10⁶ C2C12 cells were intracellularly stained with 0.4 ug Anti-Human smooth muscle actin specific (80008-1-RR, Clone:5H7) and CoraLite®488-Conjugated AffiniPure Goat Anti-Rabbit IgG(H+L) at dilution 1:1000 (red), or 0.4 ug Control Antibody. Cells were fixed with 4% PFA and permeabilized with Flow Cytometry Perm Buffer (PF00011-C).



WB result of smooth muscle actin specific antibody (80008-1-RR; 1:8000; incubated at room temperature for 1.5 hours) with sh-Control and sh-smooth muscle actin specific transfected A549 cells.