

À des fins de recherche uniquement

# Anticorps Recombinant de lapin anti-Ik $\beta$ Alpha



Numéro de catalogue:80019-1-RR

## Informations de base

Numéro de catalogue: 80019-1-RR	Numéro d'acquisition GenBank: BC002601	Méthode de purification: Purification par protéine A
Taille: 100ul , Concentration: 500 µg/ml by Nanodrop;	Identification du gène (NCBI): 4792	CloneNo.: 5C24
Hôte: Lapin	Nom complet: nuclear factor of kappa light polypeptide gene enhancer in B-cells inhibitor, alpha	Dilutions recommandées: WB 1:2000-1:10000 IHC 1:50-1:500
Isotype: IgG	MW calculé 36 kDa	
Immunogen Catalog Number: AG0345	MW observés: 36 kDa and 35 kDa	

## Applications

### Applications testées:

IHC, WB,ELISA

### Spécificité de l'espèce:

Humain, rat, souris

**Remarque-IHC: il est suggéré de démasquer l'antigène avec un tampon de TE buffer pH 9.0; (\*) À défaut, le démasquage de l'antigène peut être effectué avec un tampon citrate pH 6,0.**

### Contrôles positifs:

WB : cellules HEK-293, cellules HSC-T6, cellules Jurkat, cellules K-562, cellules NIH/3T3, cellules Raji, cellules RAW 264.7

IHC : tissu de cancer du sein humain, tissu de cancer de la prostate humain

## Informations générales

Nuclear factor of kappa light polypeptide gene enhancer in B-cells inhibitor, alpha (NFKBIA, synonyms: IKBA, MAD-3, NFKBI). NFKB1 or NFKB2 is bound to REL, RELA, or RELB to form the NFKB complex. The NFKB complex is inhibited by I-kappa-B proteins (NFKBIA or NFKBIB), which inactivate NF-kappa-B by trapping it in the cytoplasm. Phosphorylation of serine residues on the I-kappa-B proteins by kinases (IKBKA, or IKBKB) marks them for destruction via the ubiquitination pathway, thereby allowing activation of the NF-kappa-B complex. Activated NFKB complex translocates into the nucleus and binds DNA at kappa-B-binding motifs such as 5-prime GGGRNNYYCC 3-prime or 5-prime HGGARNYYCC 3-prime. IkB alpha can be observed as a band at 36 kDa in human cell lysates, and 35 kDa in mouse and rat cell lysates.

## Stockage

### Stockage:

Stocker à -20 °C.

### Tampon de stockage:

PBS avec azoture de sodium à 0,02 % et glycérol à 50 % pH 7,3

L'aliquotage n'est pas nécessaire pour le stockage à -20C

\*\*\* Les 20ul contiennent 0,1% de BSA.

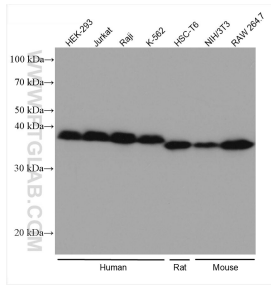
For technical support and original validation data for this product please contact:

T: 1 (888) 4PTGLAB (1-888-478-4522) (toll free in USA), or 1(312) 455-8498 (outside USA)

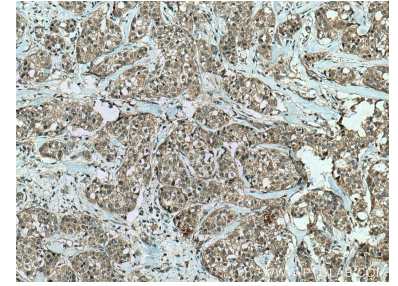
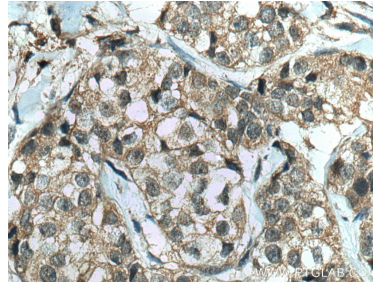
E: [proteintech@ptglab.com](mailto:proteintech@ptglab.com)  
W: [ptglab.com](http://ptglab.com)

This product is exclusively available under Proteintech Group brand and is not available to purchase from any other manufacturer.

## Données de validation sélectionnées



Various lysates were subjected to SDS PAGE followed by western blot with 80019-1-RR (1kB alpha antibody) at dilution of 1:5000 incubated at room temperature for 1.5 hours.



Immunohistochemical analysis of paraffin-embedded human breast cancer tissue slide using 80019-1-RR (1kB alpha antibody) at dilution of 1:200 (under 10x lens). Heat mediated antigen retrieval with Tris-EDTA buffer (pH 9.0).