

À des fins de recherche uniquement

# Anticorps Recombinant de lapin anti-Phospho-Beta Catenin (Ser675)



Numéro de catalogue: 80084-1-RR

1 Publications

## Informations de base

<b>Numéro de catalogue:</b> 80084-1-RR	<b>Numéro d'acquisition GenBank:</b> BC058926	<b>Méthode de purification:</b> Purification par protéine A
<b>Taille:</b> 100ul , Concentration: 1000 µg/ml by Nanodrop;	<b>Identification du gène (NCBI):</b> 1499	<b>CloneNo.:</b> 6D6
<b>Hôte:</b> Lapin	<b>Nom complet:</b> catenin (cadherin-associated protein), beta 1, 88kDa	<b>Dilutions recommandées:</b>
<b>Isotype:</b> IgG	<b>MW calculé:</b> 781 aa, 86 kDa	
	<b>MW observés:</b> 90-100 kDa	

## Applications

### Applications testées:

WB, ELISA

### Demandes citées:

WB

### Spécificité de l'espèce:

Humain, rat, souris

### Espèces citées:

souris

### Contrôles positifs:

WB : cellules HEK-293, cellules NIH/3T3 traitées à la  $\lambda$  phosphatase, cellules NIH/3T3 traitées à la  $\lambda$  phosphatase

## Informations générales

$\beta$ -Catenin, also known as CTNNB1, is an evolutionarily conserved, multifunctional intracellular protein.  $\beta$ -Catenin was originally identified in cell adherens junctions (AJs) where it functions to bridge the cytoplasmic domain of cadherins to  $\alpha$ -catenin and the actin cytoskeleton. Besides its essential role in the AJs,  $\beta$ -catenin is also a key downstream component of the canonical Wnt pathway that plays diverse and critical roles in embryonic development and adult tissue homeostasis. The Wnt/ $\beta$ -catenin pathway is also involved in the activation of other intracellular messengers such as calcium fluxes, JNK, and SRC kinases. Deregulation of  $\beta$ -catenin activity is associated with multiple diseases including cancers. (PMID: 22617422; 18334222). PKA was shown to phosphorylate  $\beta$ -catenin at Ser675. Phosphorylation at Ser675 induces  $\beta$ -catenin accumulation in the nucleus and increases its transcriptional activity.

## Publications notables

Autrice	Pubmed ID	Journal	Application
Nan Yang	35682866	Int J Mol Sci	WB

## Stockage

### Stockage:

Stocker à -20 °C.

### Tampon de stockage:

PBS avec azoture de sodium à 0,02 % et glycérol à 50 % pH 7,3

L'aliquotage n'est pas nécessaire pour le stockage à -20C

\*\*\* Les 20ul contiennent 0,1% de BSA.

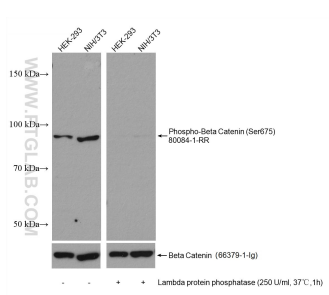
For technical support and original validation data for this product please contact:

T: 1 (888) 4PTGLAB (1-888-478-4522) (toll free in USA), or 1(312) 455-8498 (outside USA)

E: proteintech@ptglab.com  
W: ptglab.com

This product is exclusively available under Proteintech Group brand and is not available to purchase from any other manufacturer.

## Données de validation sélectionnées



Lambda protein phosphatase treated HEK-293 and NIH/3T3 and Non-treated HEK-293 and NIH/3T3 cells were subjected to SDS PAGE followed by western blot with 80084-1-RR (Phospho-Beta Catenin (Ser675) antibody) at dilution of 1:10000 incubated at room temperature for 1.5 hours. The membrane was re-blotted with Beta Catenin antibody 66379-1-Ig as control.