

À des fins de recherche uniquement

Anticorps Recombinant de lapin anti-MAP2K3



Numéro de catalogue: 80137-1-RR

Informations de base

Numéro de catalogue: 80137-1-RR	Numéro d'acquisition GenBank: BC032478	Méthode de purification: Purification par protéine A
Taille: 100ul , Concentration: 500 µg/ml by Nanodrop;	Identification du gène (NCBI): 5606	CloneNo.: 3O10
Hôte: Lapin	Nom complet: mitogen-activated protein kinase kinase 3	Dilutions recommandées: WB 1:2000-1:10000 IF 1:200-1:800
Isotype: IgG	MW calculé: 347 aa, 39 kDa	
	MW observés: 39 kDa	

Applications

Applications testées:
IF, WB, ELISA

Spécificité de l'espèce:
Humain, poisson-zèbre, rat, souris

Contrôles positifs:

WB : cellules C6, cellules A431, cellules C2C12, cellules HEK-293, cellules HeLa, cellules HepG2, cellules HT-1080, cellules Jurkat, cellules NIH/3T3, tissu de poisson-zèbre

IF : cellules HeLa,

Informations générales

MAP2K3, also named as MKK3, is a member of dual specificity kinase group and serves as a specific activator of p38 MAPK with MKK6. MKK3 can be phosphorylated by cytokines and environmental stress at sites Ser189 and Thr193 by MKKK proteins (MEKK 1-4). MKK3 plays a key role in cell differentiation, motility, division and death. It has been reported that MKK3 targeting may represent an effective and potentially safe therapeutic strategy to selectively kill cancer cells in colorectal cancer patients. (PMID: 31695024, 30770795, 26805700, 8622669)

Stockage

Stockage:
Stocker à -20 °C
Tampon de stockage:
PBS avec azoture de sodium à 0,02 % et glycérol à 50 % pH 7,3
L'aliquotage n'est pas nécessaire pour le stockage à -20C

***** Les 20ul contiennent 0,1% de BSA.**

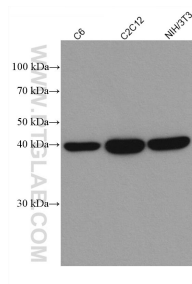
For technical support and original validation data for this product please contact:

T: 1 (888) 4PTGLAB (1-888-478-4522) (toll free in USA), or 1(312) 455-8498 (outside USA)

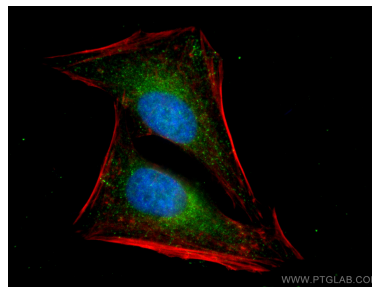
E: proteintech@ptglab.com
W: ptglab.com

This product is exclusively available under Proteintech Group brand and is not available to purchase from any other manufacturer.

Données de validation sélectionnées



Various lysates were subjected to SDS PAGE followed by western blot with 80137-1-RR (MAP2K3 antibody) at dilution of 1:5000 incubated at room temperature for 1.5 hours.



Immunofluorescent analysis of (4% PFA) fixed HeLa cells using MAP2K3 antibody (80137-1-RR, Clone: 3O10) at dilution of 1:400 and CoraLite®488-Conjugated AffiniPure Goat Anti-Rabbit IgG(H+L), CL594-Phalloidin (red). DAPI (blue)