

À des fins de recherche uniquement

# Anticorps Recombinant de lapin anti-TMPRSS2



Numéro de catalogue: 80152-1-RR

## Informations de base

Numéro de catalogue: 80152-1-RR	Numéro d'acquisition GenBank: BC051839	Méthode de purification: Purification par protéine A
Taille: 100ul , Concentration: 1000 µg/ml by Nanodrop;	Identification du gène (NCBI): 7113	CloneNo.: 715
Hôte: Lapin	Nom complet: transmembrane protease, serine 2	Dilutions recommandées: WB 1:2000-1:10000
Isotype: IgG	MW calculé 54 kDa	
Immunogen Catalog Number: AG5824	MW observés: 55 kDa	

## Applications

Applications testées:  
WB, ELISA  
Spécificité de l'espèce:  
Humain

Contrôles positifs:

WB : cellules PC-3, cellules Caco-2, cellules COLO 320, cellules HT-29, cellules LNCaP

## Informations générales

TMPRSS2, also named as PRSS10, is a type II transmembrane serine protease which is highly expressed by the epithelium of the human prostate gland. TMPRSS2 may contribute to prostate tumor metastasis via the activation of PAR-2. TMPRSS2 is a Serine protease that proteolytically cleaves and activates the viral spike glycoproteins which facilitate virus-cell membrane fusions. TMPRSS2 as a host cell factor that is critical for spread of several clinically relevant viruses, including influenza A viruses and coronaviruses (PMID: 23468491, 30626688). SARS-CoV-2 uses the SARS-CoV receptor ACE2 for entry and the serine protease TMPRSS2 for S protein priming. The initial spike protein priming by TMPRSS2 is essential for entry and viral spread of SARS-CoV-2 through interaction with the ACE2 receptor (PMID: 32142651, 30626688). Camostat mesylate, an inhibitor of TMPRSS2, can block SARS-CoV-2 infection of lung cells (PMID: 32142651). The MW of TMPRSS2 is about 65-70 kDa. It can be cleaved into some chains with MW 54 kDa, 31 kDa and 26 kDa (PMID: 25734995, 20382709, 26018085).

## Stockage

Stockage:  
Stocker à -20°C. Stable pendant un an après l'expédition.  
Tampon de stockage:  
PBS avec azoture de sodium à 0,02 % et glycérol à 50 % pH 7,3  
L'aliquotage n'est pas nécessaire pour le stockage à -20C

\*\*\* Les 20ul contiennent 0,1% de BSA.

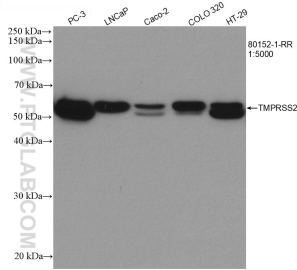
For technical support and original validation data for this product please contact:

T: 1 (888) 4PTGLAB (1-888-478-4522) (toll free  
in USA), or 1(312) 455-8498 (outside USA)

E: [proteintech@ptglab.com](mailto:proteintech@ptglab.com)  
W: [ptglab.com](http://ptglab.com)

This product is exclusively available under Proteintech Group brand and is not available to purchase from any other manufacturer.

## Données de validation sélectionnées



Various lysates were subjected to SDS PAGE followed by western blot with 80152-1-RR (TMPRSS2 antibody) at dilution of 1:5000 incubated at room temperature for 1.5 hours.