

À des fins de recherche uniquement

Anticorps Recombinant de lapin anti-PARP1



Numéro de catalogue: 80174-1-RR

1 Publications

Informations de base

Numéro de catalogue: 80174-1-RR	Numéro d'acquisition GenBank: BC037545	Méthode de purification: Purification par protéine A
Taille: 100ul , Concentration: 250 µg/ml by Nanodrop;	Identification du gène (NCBI): 142	CloneNo.: 3N19
Hôte: Lapin	Nom complet: poly (ADP-ribose) polymerase 1	Dilutions recommandées: WB 1:5000-1:20000 IHC 1:50-1:500 IF 1:50-1:500
Isotype: IgG	MW calculé 1014 aa, 113 kDa	
Immunogen Catalog Number: AG4193	MW observés: 113-116, 89 kDa	

Applications

Applications testées:

IF, IHC, WB, ELISA

Demandes citées:

WB

Spécificité de l'espèce:

Humain, rat, souris

Espèces citées:

Humain

Contrôles positifs:

WB : cellules Jurkat, cellules HeLa, cellules HepG2, cellules RAW264.7, cellules ROS1728

IHC : tissu de cancer du foie humain,

IF : tissu testiculaire de souris, cellules MCF-7

Remarque-IHC: il est suggéré de démasquer l'antigène avec un tampon de TE buffer pH 9,0; (*) À défaut, 'le démasquage de l'antigène peut être 'effectué avec un tampon citrate pH 6,0.

Informations générales

PARP1 (poly(ADP-ribose) polymerase 1) is a nuclear enzyme catalyzing the poly(ADP-ribosyl)ation of many key proteins in vivo. The normal function of PARP1 is the routine repair of DNA damage. Activated by DNA strand breaks, the PARP1 is cleaved into an 85 to 89-kDa COOH-terminal fragment and a 24-kDa NH2-terminal peptide by caspases during the apoptotic process. The appearance of PARP fragments is commonly considered as an important biomarker of apoptosis. In addition to caspases, other proteases like calpains, cathepsins, granzymes and matrix metalloproteinases (MMPs) have also been reported to cleave PARP1 and gave rise to fragments ranging from 42-89-kDa. This antibody was generated against the C-terminal region of human PARP1 and it recognizes the full-length as well as the cleavage of the PARP1.

Publications notables

Autrice	Pubmed ID	Journal	Application
Yue Liu	35533849	Int J Biol Macromol	WB

Stockage

Stockage:

Stocker à -20°C. Stable pendant un an après l'expédition.

Tampon de stockage:

PBS avec azoture de sodium à 0,02 % et glycérol à 50 % pH 7,3

L'aliquotage n'est pas nécessaire pour le stockage à -20C

*** Les 20ul contiennent 0,1% de BSA.

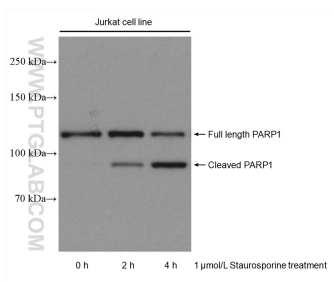
For technical support and original validation data for this product please contact:

T: 1 (888) 4PTGLAB (1-888-478-4522) (toll free in USA), or 1(312) 455-8498 (outside USA)

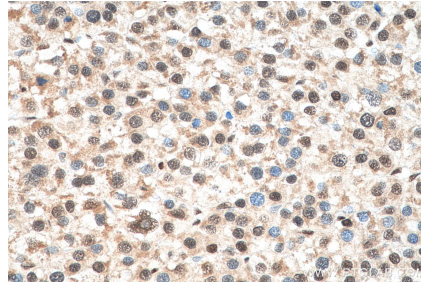
E: proteintech@ptglab.com
W: ptglab.com

This product is exclusively available under Proteintech Group brand and is not available to purchase from any other manufacturer.

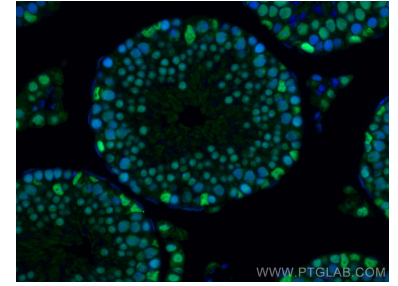
Données de validation sélectionnées



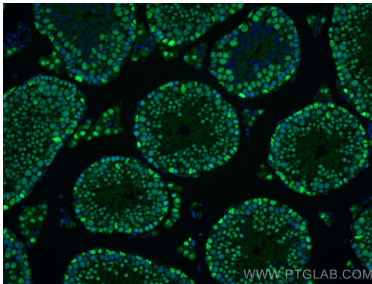
Jurkat cells treated with Staurosporin were subjected to SDS PAGE followed by western blot with 80174-1-RR (PARP1 antibody) at dilution of 1:20000 incubated at room temperature for 1.5 hours.



Immunohistochemical analysis of paraffin-embedded human liver cancer tissue slide using 80174-1-RR (PARP1 antibody) at dilution of 1:200 (under 40x lens). Heat mediated antigen retrieval with Tris-EDTA buffer (pH 9.0).



Immunofluorescent analysis of (4% PFA) fixed mouse testis tissue using PARP1 antibody (80174-1-RR, Clone: 3N19) at dilution of 1:200 and CoraLite®488-Conjugated AffiniPure Goat Anti-Rabbit IgG(H+L).



Immunofluorescent analysis of (4% PFA) fixed mouse testis tissue using PARP1 antibody (80174-1-RR, Clone: 3N19) at dilution of 1:200 and CoraLite®488-Conjugated AffiniPure Goat Anti-Rabbit IgG(H+L).