

À des fins de recherche uniquement

# Anticorps Recombinant de lapin anti-PEX14 (human specific)



Numéro de catalogue:80196-1-RR

## Informations de base

Numéro de catalogue: 80196-1-RR	Numéro d'acquisition GenBank: BC006327	Méthode de purification: Purification par protéine A
Taille: 100ul , Concentration: 700 µg/ml by Nanodrop;	Identification du gène (NCBI): 5195	CloneNo.: 6K5
Hôte: Lapin	Nom complet: peroxisomal biogenesis factor 14	Dilutions recommandées: WB 1:2000-1:14000 IHC 1:200-1:800 IF 1:50-1:500
Isotype: IgG	MW calculé 41 kDa	
Immunogen Catalog Number: AG0932	MW observés: 57 kDa	

## Applications

### Applications testées:

IF, IHC, WB, ELISA

### Spécificité de l'espèce:

Humain

**Remarque-IHC: il est suggéré de démasquer l'antigène avec un tampon de TE buffer pH 9,0; (\*) À défaut, 'le démasquage de l'antigène peut être effectué avec un tampon citrate pH 6,0.**

### Contrôles positifs:

WB : cellules HeLa, cellules HEK-293, cellules HepG2, cellules Jurkat

IHC : tissu de cancer du foie humain, tissu rénal humain

IF : cellules HeLa,

## Informations générales

PEX14 (peroxisomal biogenesis factor 14) is a peroxisomal membrane protein that is essential for protein docking onto the peroxisomes. It is a central component of the peroxisomal matrix protein import machinery and interacts with PEX5 and PEX19. PEX14 is ubiquitously expressed and defects in PEX14 are the cause of peroxisome biogenesis disorder complementation group K (PBD-CGK). This antibody can be used to detect endogenous PEX14 with an apparent molecular weight of 57 kDa (PMID: 16449325; 9653144) and recognize peroxisomal structures in human, monkey and mouse cells.

This antibody is specific to human PEX14. It can't detect mouse or rat PEX14.

## Stockage

### Stockage:

Stocker à -20 °C

### Tampon de stockage:

PBS avec azoture de sodium à 0,02 % et glycérol à 50 % pH 7,3

L'aliquotage n'est pas nécessaire pour le stockage à -20C

\*\*\* Les 20ul contiennent 0,1% de BSA.

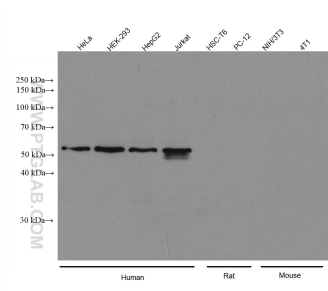
For technical support and original validation data for this product please contact:

T: 1 (888) 4PTGLAB (1-888-478-4522) (toll free in USA), or 1(312) 455-8498 (outside USA)

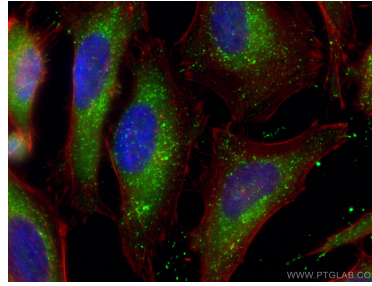
E: [proteintech@ptglab.com](mailto:proteintech@ptglab.com)  
W: [ptglab.com](http://ptglab.com)

This product is exclusively available under Proteintech Group brand and is not available to purchase from any other manufacturer.

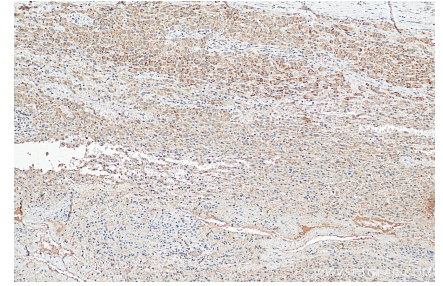
## Données de validation sélectionnées



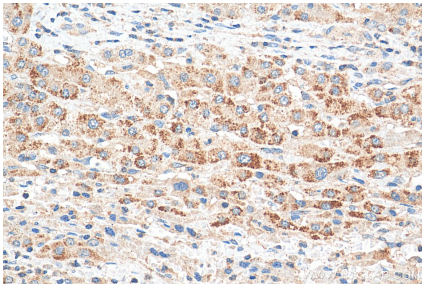
Various lysates were subjected to SDS PAGE followed by western blot with 80196-1-RR (PEX14 (human specific) antibody) at dilution of 1:7000 incubated at room temperature for 1.5 hours.



Immunofluorescent analysis of (-20°C Ethanol) fixed HeLa cells using PEX14 antibody (80196-1-RR, Clone: 6K5) at dilution of 1:150 and CoraLite®488-Conjugated AffiniPure Goat Anti-Rabbit IgG(H+L), CL594-Phalloidin (red).



Immunohistochemical analysis of paraffin-embedded human liver cancer tissue slide using 80196-1-RR (PEX14 (human specific) antibody) at dilution of 1:400 (under 10x lens). Heat mediated antigen retrieval with Tris-EDTA buffer (pH 9.0).



Immunohistochemical analysis of paraffin-embedded human liver cancer tissue slide using 80196-1-RR (PEX14 (human specific) antibody) at dilution of 1:400 (under 40x lens). Heat mediated antigen retrieval with Tris-EDTA buffer (pH 9.0).