

À des fins de recherche uniquement

Anticorps Recombinant de lapin anti- Phospho-S6 Ribosomal protein (Ser236)



Numéro de catalogue: **80206-1-RR**

Informations de base

Número de catalogue: 80206-1-RR	Número d'acquisition GenBank: BC000524	Méthode de purification: Purification par protéine A
Taille: 100ul , Concentration: 250 µg/ml by Nanodrop;	Identification du gène (NCBI): 6194	CloneNo.: 7K17
Hôte: Lapin	Nom complet: ribosomal protein S6	Dilutions recommandées: WB 1:2000-1:10000
Isotype: IgG	MW calculé 29 kDa	
	MW observés: 32 kDa	

Applications

Applications testées:

FC, WB, ELISA

Spécificité de l'espèce:

Humain, souris

Contrôles positifs:

WB : cellules HEK-293, cellules HEK-293 traitées à la calyculine A, cellules MCF-7, cellules MCF-7 traitées à l'IGF-1

Informations générales

Ribosomal protein S6 (RPS6) is one of the components of the 40S ribosomal subunit. RPS6 has been functionally regarded as the stimulator and/or inhibitor of certain types of mRNA translation, as well as the regulator of cellular metabolisms, cells size, survival and proliferation. RPS6 is phosphorylated at multiple sites, comprised between Ser235 and Ser247, by the p70 rpS6 kinase (S6K) 1, which is a major downstream effector of the mammalian target of rapamycin complex 1 (mTORC1). Phosphorylation of RPS6 at the dual site Ser235/236 occurs also independently of mTORC1, via the p90 ribosomal S6 kinases (RSK), which are activated by the extracellular signal-regulated kinases (ERK). Recent studies performed in pancreatic β -cells identified PKA as an additional RPS6 kinase, specifically involved in the phosphorylation of Ser235/236. (PMID: 26490682, PMID: 21814187, PMID: 31112404). 80206-1-RR specifically recognizes the phosphorylation site of Ser236 or dual site Ser235/236.

Stockage

Stockage:

Stocker à -20°C. Stable pendant un an après l'expédition.

Tampon de stockage:

PBS avec azoture de sodium à 0,02 % et glycérol à 50 % pH 7,3

L'aliquotage n'est pas nécessaire pour le stockage à -20C

***** Les 20ul contiennent 0,1% de BSA.**

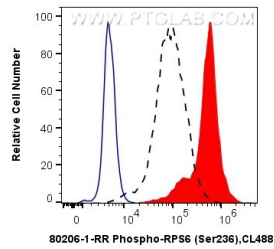
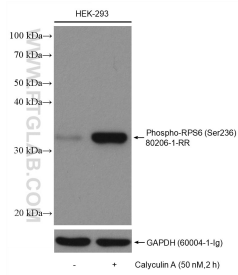
For technical support and original validation data for this product please contact:

T: 1 (888) 4PTGLAB (1-888-478-4522) (toll free
in USA), or 1(312) 455-8498 (outside USA)

E: proteintech@ptglab.com
W: ptglab.com

This product is exclusively available under Proteintech Group brand and is not available to purchase from any other manufacturer.

Données de validation sélectionnées



Non-treated and Calyculin A treated HEK-293 cells were subjected to SDS PAGE followed by western blot with 80206-1-RR (Phospho-S6 Ribosomal protein (Ser236) antibody) at dilution of 1:5000 incubated at room temperature for 1.5 hours. The membrane was stripped and re-blotting with GAPDH antibody as loading control.

1×10^6 HEK-293 cells untreated (dashed lines) or treated with Calyculin A (red) were intracellularly stained with 0.5 μ g Anti-Human Phospho-S6 Ribosomal protein (Ser236) (80206-1-RR, Clone:7K17) and CoraLite[®]488-Conjugated AffiniPure Goat Anti-Rabbit IgG(H+L) at dilution 1:1000, or 0.5 μ g Control Antibody (blue). Cells were fixed with 4% PFA and permeabilized with 90% MeOH.