

À des fins de recherche uniquement

# Anticorps Recombinant de lapin anti-S6 Ribosomal protein



Numéro de catalogue: 80208-1-RR

## Informations de base

Numéro de catalogue: 80208-1-RR	Numéro d'acquisition GenBank: BC000524	Méthode de purification: Purification par protéine A
Taille: 100ul , Concentration: 300 µg/ml by Nanodrop;	Identification du gène (NCBI): 6194	CloneNo.: 6L9
Hôte: Lapin	Nom complet: ribosomal protein S6	Dilutions recommandées: WB 1:5000-1:50000 IF 1:50-1:500
Isotype: IgG	MW calculé 29 kDa	
	MW observés: 32 kDa	

## Applications

Applications testées:  
IF, WB, ELISA

Spécificité de l'espèce:  
Humain, poisson-zèbre, rat, souris

Contrôles positifs:

WB : cellules LNCaP, cellules 4T1, cellules HEK-293, cellules HeLa, cellules HepG2, cellules HSC-T6, cellules Jurkat, cellules RAW 264.7, tissu de poisson-zèbre

IF : cellules HepG2,

## Informations générales

Ribosomal protein S6 (RPS6), Phosphoprotein NP33. It may play an important role in controlling cell growth and proliferation through the selective translation of particular classes of mRNA. Ribosomal protein S6 is the major substrate of protein kinases in eukaryote ribosomes. The phosphorylation is stimulated by growth factors, tumor promoting agents, and mitogens. It is dephosphorylated at growth arrest. Phosphorylated at Ser-235 and Ser-236 by RPS6KA1 and RPS6KA3; phosphorylation at these sites facilitates the assembly of the preinitiation complex.

## Stockage

Stockage:

Stocker à -20°C. Stable pendant un an après l'expédition.

Tampon de stockage:

PBS avec azoture de sodium à 0,02 % et glycérol à 50 % pH 7,3

L'aliquotage n'est pas nécessaire pour le stockage à -20C

\*\*\* Les 20ul contiennent 0,1% de BSA.

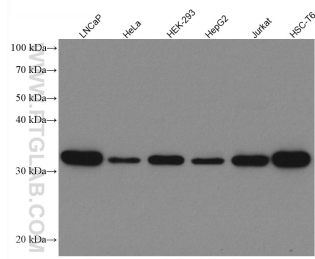
For technical support and original validation data for this product please contact:

T: 1 (888) 4PTGLAB (1-888-478-4522) (toll free  
in USA), or 1(312) 455-8498 (outside USA)

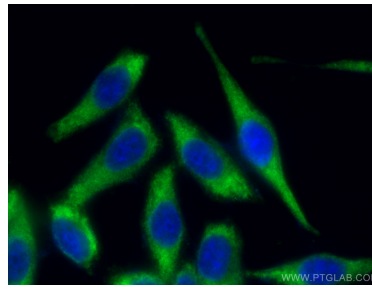
E: [proteintech@ptglab.com](mailto:proteintech@ptglab.com)  
W: [ptglab.com](http://ptglab.com)

This product is exclusively available under Proteintech Group brand and is not available to purchase from any other manufacturer.

## Données de validation sélectionnées



Various lysates were subjected to SDS PAGE followed by western blot with 80208-1-RR (S6 Ribosomal protein antibody) at dilution of 1:15000 incubated at room temperature for 1.5 hours.



Immunofluorescent analysis of (-20°C Methanol) fixed HepG2 cells using S6 Ribosomal protein antibody (80208-1-RR, Clone: 6L9) at dilution of 1:200 and CoraLite®488-Conjugated AffiniPure Goat Anti-Rabbit IgG(H+L).