

À des fins de recherche uniquement

# Anticorps Recombinant de lapin anti-Vimentin



Numéro de catalogue: 80232-1-RR

Phare

## Informations de base

Numéro de catalogue: 80232-1-RR	Numéro d'acquisition GenBank: BC000163	Méthode de purification: Purification par protéine A
Taille: 100ul , Concentration: 500 µg/ml by Nanodrop;	Identification du gène (NCBI): 7431	CloneNo.: 6K21
Hôte: Lapin	Nom complet: vimentin	Dilutions recommandées: WB 1:20000-1:100000 IHC 1:1250-1:5000 IF 1:200-1:800
Isotype: IgG	MW calculé 466 aa, 54 kDa	
Immunogen Catalog Number: AG0489	MW observés: 50-55 kDa	

## Applications

### Applications testées:

IF, IHC, WB, ELISA

### Spécificité de l'espèce:

Humain, rat, souris

**Remarque-IHC: il est suggéré de démasquer l'antigène avec un tampon de TE buffer pH 9,0; (\*) À défaut, 'le démasquage de l'antigène peut être effectué avec un tampon citrate pH 6,0.**

### Contrôles positifs:

WB : cellules MCF-7, cellules 4T1, cellules A549, cellules HeLa, cellules HSC-T6, cellules NIH/3T3, cellules ROS1728, cellules U-251, cellules U2OS

IHC : tissu de cancer du sein humain, tissu de cancer du foie humain

IF : cellules HepG2,

## Informations générales

Vimentin, also named as VIM, belongs to the intermediate filament family. Vimentin is class-III intermediate filaments found in various non-epithelial cells, especially mesenchymal cells. Vimentin is important for stabilizing the architecture of the cytoplasm. Monocyte-derived macrophages secrete vimentin into the extracellular space in vitro. Secretion of vimentin was enhanced by the proinflammatory cytokine tumor necrosis factor-alpha (TNFA; 191160) and inhibited by the antiinflammatory cytokine IL10 (124092), suggesting that vimentin is involved in the immune response. Vimentin has specialized functions that contribute to specific dynamic cellular processes. As a phosphoprotein, 55-60 kDa of vimentin proteins can be observed due to the different phosphorylation level. Isoforms of vimentin (49 kDa and 60 kDa) had also been reported. (PMID: 8640945, 22728585).

## Stockage

### Stockage:

Stocker à -20 °C

### Tampon de stockage:

PBS avec azoture de sodium à 0,02 % et glycérol à 50 % pH 7,3

L'aliquotage n'est pas nécessaire pour le stockage à -20C

\*\*\* Les 20ul contiennent 0,1% de BSA.

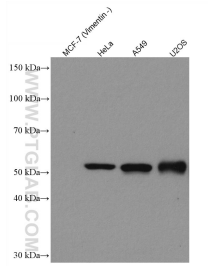
For technical support and original validation data for this product please contact:

T: 1 (888) 4PTGLAB (1-888-478-4522) (toll free in USA), or 1(312) 455-8498 (outside USA)

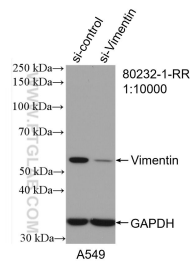
E: [proteintech@ptglab.com](mailto:proteintech@ptglab.com)  
W: [ptglab.com](http://ptglab.com)

This product is exclusively available under Proteintech Group brand and is not available to purchase from any other manufacturer.

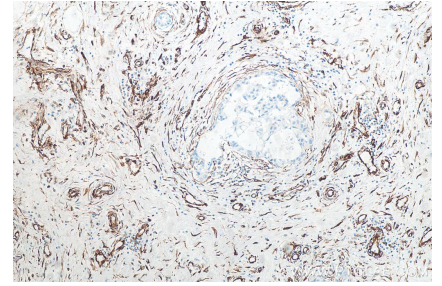
## Données de validation sélectionnées



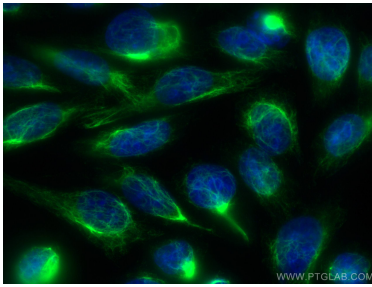
Various lysates were subjected to SDS PAGE followed by western blot with 80232-1-RR (Vimentin antibody) at dilution of 1:50000 incubated at room temperature for 1.5 hours.



WB result of Vimentin antibody (80232-1-RR; 1:10000; incubated at room temperature for 1.5 hours) with sh-Control and sh-Vimentin transfected HeLa cells.



Immunohistochemical analysis of paraffin-embedded human breast cancer tissue slide using 80232-1-RR (Vimentin antibody) at dilution of 1:2500 (under 10x lens). Heat mediated antigen retrieval with Tris-EDTA buffer (pH 9.0).



Immunofluorescent analysis of (-20°C Ethanol) fixed HepG2 cells using Vimentin antibody (80232-1-RR, Clone: 6K21) at dilution of 1:400 and CoraLite®488-Conjugated AffiniPure Goat Anti-Rabbit IgG(H+L).