

À des fins de recherche uniquement

# Anticorps Recombinant de lapin anti-Phospho-SMAD1 (Ser195)



Numéro de catalogue:80257-1-RR

## Informations de base

Numéro de catalogue: 80257-1-RR	Numéro d'acquisition GenBank: BC001878	Méthode de purification: Purification par protéine A
Taille: 100ul , Concentration: 500 µg/ml by Nanodrop;	Identification du gène (NCBI): 4086	CloneNo.: 1K6
Hôte: Lapin	Nom complet: SMAD family member 1	Dilutions recommandées: WB 1:2000-1:10000
Isotype: IgG	MW calculé 52 kDa	
	MW observés: 60 kDa	

## Applications

Applications testées:  
WB, ELISA  
Spécificité de l'espèce:  
Humain

Contrôles positifs:  
WB : cellules A431, cellules A431 traitées aux UV,  
cellules HepG2 traitées à l'BMP2

## Informations générales

SMAD family member 1 (Smad1) have been involved in metastatic progression of many cancer types. Smad1 can be induced by many tumor-stimulating cytokines such as the bone morphogenetic protein 2 (BMP2) and TNF $\alpha$  and plays important roles in cell invasion and metastasis. BMP2 signalling is initiated by binding to its specific receptors, which leads to in the phosphorylation and nuclear translocation of Smad1. Translocated Smad1 then modulates the expression of downstream osteogenic genes. (PMID: 32954678, PMID: 30008908)

## Stockage

Stockage:  
Stocker à -20 °C.  
Tampon de stockage:  
PBS avec azoture de sodium à 0,02 % et glycérol à 50 % pH 7,3  
L'aliquotage n'est pas nécessaire pour le stockage à -20C

\*\*\* Les 20ul contiennent 0,1% de BSA.

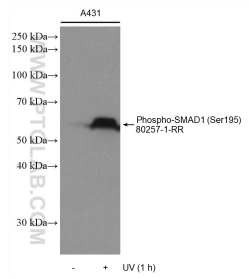
For technical support and original validation data for this product please contact:

T: 1 (888) 4PTGLAB (1-888-478-4522) (toll free  
in USA), or 1(312) 455-8498 (outside USA)

E: [proteintech@ptglab.com](mailto:proteintech@ptglab.com)  
W: [ptglab.com](http://ptglab.com)

This product is exclusively available under Proteintech Group brand and is not available to purchase from any other manufacturer.

## Données de validation sélectionnées



Non-treated and UV treated A431 cells were subjected to SDS PAGE followed by western blot with 80257-1-RR (Phospho-SMAD1 (Ser195) antibody) at dilution of 1:5000 incubated at room temperature for 1.5 hours.