

À des fins de recherche uniquement

Anticorps Recombinant de lapin anti-METTL3



Numéro de catalogue: 80323-1-RR **Phare**

Informations de base

Numéro de catalogue: 80323-1-RR	Numéro d'acquisition GenBank: BC001650	Méthode de purification: Purification par protéine A
Taille: 100ul, Concentration: 1000 µg/ml by Nanodrop;	Identification du gène (NCBI): 56339	CloneNo.: 219
Hôte: Lapin	Nom complet: methyltransferase like 3	Dilutions recommandées: WB 1:5000-1:50000 IHC 1:50-1:500 IF 1:50-1:500
Isotype: IgG	MW calculé 64 kDa	
Immunogen Catalog Number: AG7110	MW observés: 65-70 kDa	

Applications

Applications testées:

IF, IHC, WB, ELISA

Spécificité de l'espèce:

Humain, rat, souris

Remarque-IHC: il est suggéré de démasquer l'antigène avec un tampon de TE buffer pH 9,0; (*) À défaut, 'le démasquage de l'antigène peut être effectué avec un tampon citrate pH 6,0.

Contrôles positifs:

WB : cellules LNCaP, cellules HEK-293, cellules HeLa, cellules HepG2, cellules HSC-T6, cellules Jurkat, cellules K-562, cellules Neuro-2a, cellules NIH/3T3

IHC : tissu testiculaire de souris, tissu de cancer de l'oesophage humain, tissu de cancer du côlon humain, tissu de cancer du poumon humain, tissu testiculaire de rat

IF : cellules Jurkat,

Informations générales

METTL3 is a key S-adenosyl-L-methionine-binding subunit, which is component of a complex multicomponent enzyme that catalyzes the methylation of internal adenosine residues in eukaryotic mRNA, forming N6-methyladenosine. It contains 2 putative nuclear localization signals and 2 consensus methylation motifs. The calculated molecular weight of METTL3 is 64 kDa, but modified METTL3 is about 65-70 kDa.

Stockage

Stockage:

Stocker à -20 °C

Tampon de stockage:

PBS avec azoture de sodium à 0,02 % et glycérol à 50 % pH 7,3

L'aliquotage n'est pas nécessaire pour le stockage à -20C

*** Les 20ul contiennent 0,1% de BSA.

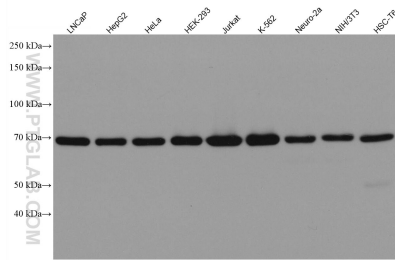
For technical support and original validation data for this product please contact:

T: 1 (888) 4PTGLAB (1-888-478-4522) (toll free in USA), or 1(312) 455-8498 (outside USA)

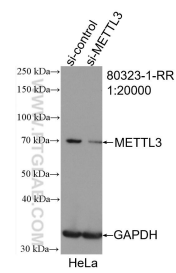
E: proteintech@ptglab.com
W: ptglab.com

This product is exclusively available under Proteintech Group brand and is not available to purchase from any other manufacturer.

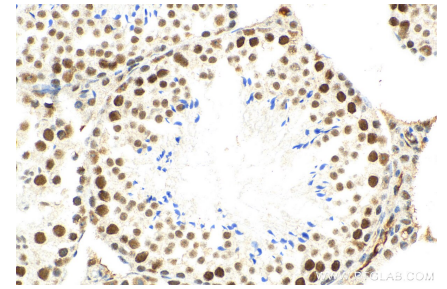
Données de validation sélectionnées



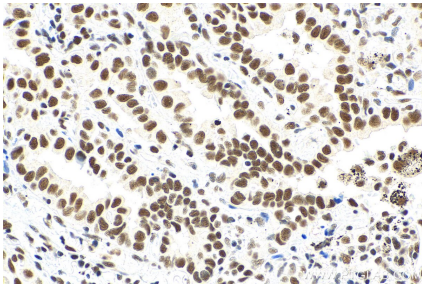
Various lysates were subjected to SDS PAGE followed by western blot with 80323-1-RR (METTL3 antibody) at dilution of 1:10000 incubated at room temperature for 1.5 hours.



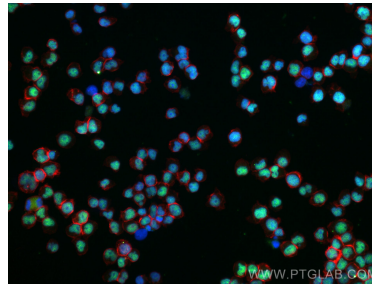
WB result of METTL3 antibody (80323-1-RR; 1:20000; incubated at room temperature for 1.5 hours) with sh-Control and sh-METTL3 transfected HeLa cells.



Immunohistochemical analysis of paraffin-embedded mouse testis tissue slide using 80323-1-RR (METTL3 antibody) at dilution of 1:200 (under 40x lens). Heat mediated antigen retrieval with Tris-EDTA buffer (pH 9.0).



Immunohistochemical analysis of paraffin-embedded human lung cancer tissue slide using 80323-1-RR (METTL3 antibody) at dilution of 1:200 (under 40x lens). Heat mediated antigen retrieval with Tris-EDTA buffer (pH 9.0).



Immunofluorescent analysis of (4% PFA) fixed Jurkat cells using METTL3 antibody (80323-1-RR, Clone: 219) at dilution of 1:200 and Coralite@488-Conjugated AffiniPure Goat Anti-Rabbit IgG(H+L), CL594-Phalloidin (red).