

À des fins de recherche uniquement

Anticorps Recombinant de lapin anti-Beta Catenin



Numéro de catalogue: 80488-1-RR

Informations de base

Numéro de catalogue: 80488-1-RR	Numéro d'acquisition GenBank: BC058926	Méthode de purification: Purification par protéine A
Taille: 100ul, Concentration: 1000 µg/ml by Nanodrop;	Identification du gène (NCBI): 1499	CloneNo.: 2J24
Hôte: Lapin	Nom complet: catenin (cadherin-associated protein), beta 1, 88kDa	Dilutions recommandées: WB 1:5000-1:50000 IHC 1:1000-1:4000 IF 1:1000-1:4000
Isotype: IgG	MW calculé: 781 aa, 86 kDa	
	MW observés: 92 kDa	

Applications

Applications testées:

IF, IHC, WB, ELISA

Spécificité de l'espèce:

Humain, poisson-zèbre, porc, rat, souris

Remarque-IHC: il est suggéré de démasquer l'antigène avec un tampon de TE buffer pH 9,0; (*) À défaut, 'le démasquage de l'antigène peut être effectué avec un tampon citrate pH 6,0.

Contrôles positifs:

WB : cellules A431, cellules 4T1, cellules HEK-293, cellules HeLa, cellules HSC-T6, cellules LNCaP, cellules MCF-7, cellules NIH/3T3, tissu cérébral de porc, tissu de poisson-zèbre

IHC : tissu de cancer du foie humain, tissu de cancer du côlon humain, tissu de cancer du sein humain

IF : cellules MCF-7,

Informations générales

β-Catenin, also known as CTNNB1, is an evolutionarily conserved, multifunctional intracellular protein. β-Catenin is a 92-kDa protein, originally identified in cell adherens junctions (AJs) where it functions to bridge the cytoplasmic domain of cadherins to α-catenin and the actin cytoskeleton. Besides its essential role in the AJs, β-catenin is also a key downstream component of the canonical Wnt pathway that plays diverse and critical roles in embryonic development and adult tissue homeostasis. The Wnt/β-catenin pathway is also involved in the activation of other intracellular messengers such as calcium fluxes, JNK, and SRC kinases. Deregulation of β-catenin activity is associated with multiple diseases including cancers. (PMID: 22617422; 18334222)

Stockage

Stockage:

Stocker à -20 °C.

Tampon de stockage:

PBS avec azotate de sodium à 0,02 % et glycérol à 50 % pH 7,3

L'aliquotage n'est pas nécessaire pour le stockage à -20C

*** Les 20ul contiennent 0,1% de BSA.

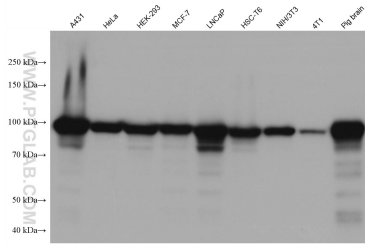
For technical support and original validation data for this product please contact:

T: 1 (888) 4PTGLAB (1-888-478-4522) (toll free in USA), or 1(312) 455-8498 (outside USA)

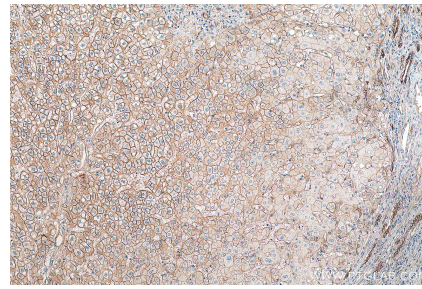
E: proteintech@ptglab.com
W: ptglab.com

This product is exclusively available under Proteintech Group brand and is not available to purchase from any other manufacturer.

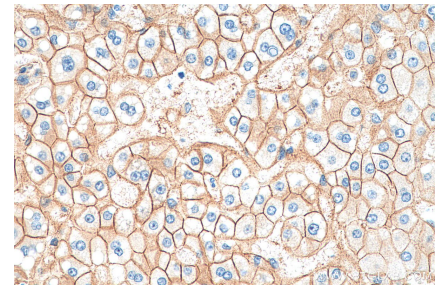
Données de validation sélectionnées



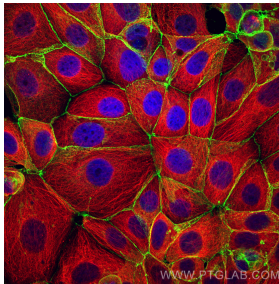
Various lysates were subjected to SDS PAGE followed by western blot with 80488-1-RR (Beta Catenin antibody) at dilution of 1:10000 incubated at room temperature for 1.5 hours.



Immunohistochemical analysis of paraffin-embedded human liver cancer tissue slide using 80488-1-RR (Beta Catenin antibody) at dilution of 1:2000 (under 10x lens). Heat mediated antigen retrieval with Tris-EDTA buffer (pH 9.0).



Immunohistochemical analysis of paraffin-embedded human liver cancer tissue slide using 80488-1-RR (Beta Catenin antibody) at dilution of 1:2000 (under 40x lens). Heat mediated antigen retrieval with Tris-EDTA buffer (pH 9.0).



Immunofluorescent analysis of (4% PFA) fixed MCF-7 cells using Beta Catenin antibody (80488-1-RR, Clone: 2J24) at dilution of 1:2000 and CoraLite®488-Conjugated AffiniPure Goat Anti-Rabbit IgG(H+L), Alpha Tubulin antibody (66031-1-Ig, Clone: 1E4C11, red).