

À des fins de recherche uniquement

Anticorps Recombinant de lapin anti-Occludin



Numéro de catalogue: 80545-1-RR

Informations de base

Numéro de catalogue: 80545-1-RR	Numéro d'acquisition GenBank: BC029886	Méthode de purification: Purification par protéine A
Taille: 100ul, Concentration: 500 µg/ml by Nanodrop;	Identification du gène (NCBI): 4950	CloneNo.: 8B2
Hôte: Lapin	Nom complet: occludin	Dilutions recommandées: WB 1:5000-1:50000 IF 1:250-1:1000
Isotype: IgG	MW calculé 522 aa, 59 kDa	
Immunogen Catalog Number: AG26173	MW observés: 59 kDa	

Applications

Applications testées:
IF, WB, ELISA

Spécificité de l'espèce:
Humain, porc, souris

Contrôles positifs:

WB : cellules HEK-293, cellules HaCaT, cellules HUVEC, cellules U2OS, tissu de côlon de porc, tissu de côlon de souris

IF : cellules MCF-7,

Informations générales

Occludin is an integral membrane protein located at the tight junction. It is a tetraspanin protein with four transmembrane domains, intracellular N and C termini and two extracellular loops. Occludin plays a role in the formation and regulation of the tight junction paracellular permeability barrier. Occludin can exist in different isoforms, owing to modifications at the posttranscriptional and posttranslational levels, the monomeric occludin migrates as 53-65 kDa on SDS-PAGE (PMID: 22083955; 19457074).

Stockage

Stockage:
Stocker à -20 °C.

Tampon de stockage:
PBS avec azote de sodium à 0,02 % et glycérol à 50 % pH 7,3

L'aliquotage n'est pas nécessaire pour le stockage à -20C

*** Les 20ul contiennent 0,1% de BSA.

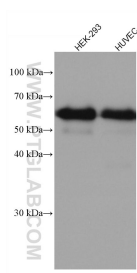
For technical support and original validation data for this product please contact:

T: 1 (888) 4PTGLAB (1-888-478-4522) (toll free
in USA), or 1(312) 455-8498 (outside USA)

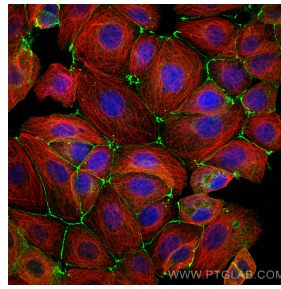
E: proteintech@ptglab.com
W: ptglab.com

This product is exclusively available under Proteintech Group brand and is not available to purchase from any other manufacturer.

Données de validation sélectionnées



HEK-293 cells were subjected to SDS PAGE followed by western blot with 80545-1-RR (Occludin antibody) at dilution of 1:40000 incubated at room temperature for 1.5 hours.



Immunofluorescent analysis of (4% PFA) fixed MCF-7 cells using Occludin antibody (80545-1-RR, Clone: 8B2) at dilution of 1:500 and CoraLite®488-Conjugated AffiniPure Goat Anti-Rabbit IgG(H+L), Alpha Tubulin antibody (66031-1-Ig, Clone: 1E4C11, red).