

À des fins de recherche uniquement

# Anticorps Recombinant de lapin anti-Phospho-PDH E1 Alpha (Ser300)



Numéro de catalogue: 80572-1-RR

## Informations de base

Numéro de catalogue: 80572-1-RR	Numéro d'acquisition GenBank: BC002406	Méthode de purification: Purification par protéine A
Taille: 100ul , Concentration: 1000 µg/ml by Nanodrop;	Identification du gène (NCBI): 5160	CloneNo.: 2E19
Hôte: Lapin	Nom complet: pyruvate dehydrogenase (lipoamide) alpha 1	Dilutions recommandées: WB 1:5000-1:50000
Isotype: IgG	MW calculé 43 kDa	
	MW observés: 40 kDa	

## Applications

Applications testées:  
WB, ELISA

Spécificité de l'espèce:  
Humain, rat, souris

Contrôles positifs:

WB : cellules HeLa, cellules HEK-293 traitées à la calyculine A, cellules HeLa traitées à la calyculine A, cellules HSC-T6, cellules HSC-T6 traitées à la calyculine A, cellules NIH/3T3, cellules NIH/3T3 traitées à la calyculine A

## Informations générales

PDH E1 Alpha (PDHA1), as the major component of PDH, can be phosphorylated and inactivated by PDHK1. PDHA1 contains three serine residues (Ser232, Ser293, or Ser300) that can be reversibly phosphorylated by a dedicated family of four inhibitory pyruvate dehydrogenase kinases (PDHK1-4) and two reactivating phosphatases (PDP1, 2). Hypoxia induces the expression of PDHK1 and PDHK3 and hyperphosphorylates PDHA1. Phosphorylated PDHA1 inactivates the whole pyruvate dehydrogenase complex (PDC), reduces pyruvate entering into the tricarboxylic acid (TCA) cycle for oxidative phosphorylation, enhances the Warburg effect and promotes tumorigenesis. (PMID: 30993888, PMID: 34749809)

## Stockage

Stockage:  
Stocker à -20 °C.  
Tampon de stockage:  
PBS avec azoture de sodium à 0,02 % et glycérol à 50 % pH 7,3  
L'aliquotage n'est pas nécessaire pour le stockage à -20C

\*\*\* Les 20ul contiennent 0,1% de BSA.

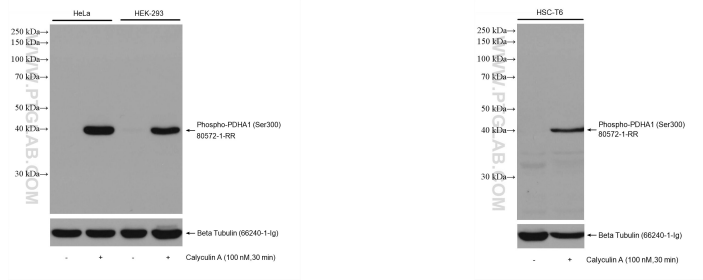
For technical support and original validation data for this product please contact:

T: 1 (888) 4PTGLAB (1-888-478-4522) (toll free  
in USA), or 1(312) 455-8498 (outside USA)

E: proteintech@ptglab.com  
W: ptglab.com

This product is exclusively available under Proteintech Group brand and is not available to purchase from any other manufacturer.

## Données de validation sélectionnées



Non-treated and Calyculin A treated cells were subjected to SDS PAGE followed by western blot with 80572-1-RR (Phospho-PDH E1 Alpha (Ser300) antibody) at dilution of 1:10000 incubated at room temperature for 1.5 hours. The membrane was stripped and re-blotted with Beta Tubulin antibody as loading control.

Non-treated and Calyculin A treated HSC-T6 cells were subjected to SDS PAGE followed by western blot with 80572-1-RR (Phospho-PDH E1 Alpha (Ser300) antibody) at dilution of 1:10000 incubated at room temperature for 1.5 hours. The membrane was stripped and re-blotted with Beta Tubulin antibody as loading control.