

À des fins de recherche uniquement

# Anticorps Recombinant de lapin anti-NRF2, NFE2L2



Numéro de catalogue: 80593-1-RR

Phare

9 Publications

## Informations de base

Numéro de catalogue:  
80593-1-RR

Taille:  
100ul, Concentration: 500 µg/ml by  
Nanodrop;

Hôte:  
Lapin

Isotype:  
IgG

Immunogen Catalog Number:  
AG9489

Numéro d'acquisition GenBank:  
BC011558

Identification du gène (NCBI):  
4780

Nom complet:  
nuclear factor (erythroid-derived 2)-  
like 2

MW calculé  
605 aa, 68 kDa

MW observés:  
110 kDa

Méthode de purification:  
Purification par protéine A

CloneNo.:  
1121

Dilutions recommandées:  
WB 1:1000-1:5000  
IP 0.5-4.0 ug for IP and 1:500-1:1000  
for WB  
IHC 1:200-1:800  
IF 1:300-1:1200

## Applications

Applications testées:  
FC, IF, IHC, IP, WB, ELISA

Demandes citées:  
IF, IHC, WB

Spécificité de l'espèce:  
Humain, souris

Espèces citées:  
Humain, rat, souris

Contrôles positifs:

WB : MG132 treated HEK-293 cells, cellules NIH/3T3  
traitées au MG132

IP : cellules HeLa,

IHC : tissu de tumeur ovarienne humain,

IF : MG132 treated HepG2 cells, cellules HepG2

**Remarque-IHC: il est suggéré de démasquer l'antigène avec un tampon de TE buffer pH 9.0; (\*) À défaut, le démasquage de l'antigène peut être effectué avec un tampon citrate pH 6.0.**

## Informations générales

NRF2, also named as NFE2L2, belongs to the bZIP family and CNC subfamily. It is a transcription activator that binds to antioxidant response (ARE) elements in the promoter regions of target genes. NRF2 is important for the coordinated up-regulation of genes in response to oxidative stress. It may be involved in the transcriptional activation of genes of the beta-globin cluster by mediating enhancer activity of hypersensitive site 2 of the beta-globin locus control region. Nrf2 is a key player in the regulation of genes encoding for many antioxidative response enzymes. The expression of NRF2 may be induced under oxidative stress (PMID:14567983). In lung cancer, Nrf2 activation in malignant cells has been associated with tumor progression and chemotherapy resistance (PMID:20534738). Identifying patients with abnormal NRF2 expression may be important for selection for chemotherapy in NSCLC. As new investigators break into the emerging field of Nrf2 research, confusion regarding the correct migratory pattern of Nrf2 is causing doubts about the accuracy and reproducibility of published results. This letter provides solid evidence that the actually observed molecular weight of Nrf2 is about 70kDa and 95-110 kDa. (PMID: 22703241).

## Publications notables

Autrice	Pubmed ID	Journal	Application
Yue Li	36234847	Molecules	WB,IF
Jianqiang Hu	35303762	Br J Pharmacol	WB
Ye Bai	36524376	Mol Med Rep	WB

## Stockage

Stockage:

Stocker à -20°C. Stable pendant un an après l'expédition.

Tampon de stockage:

PBS avec azoture de sodium à 0,02 % et glycérol à 50 % pH 7,3

L'aliquoteage n'est pas nécessaire pour le stockage à -20C

\*\*\* Les 20ul contiennent 0,1% de BSA.

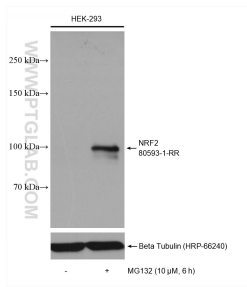
For technical support and original validation data for this product please contact:

T: 1 (888) 4PTGLAB (1-888-478-4522) (toll free  
in USA), or 1(312) 455-8498 (outside USA)

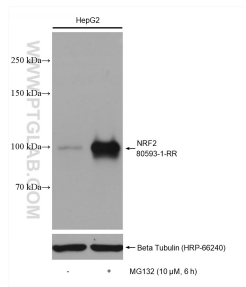
E: proteintech@ptglab.com  
W: ptglab.com

This product is exclusively available under Proteintech Group brand and is not available to purchase from any other manufacturer.

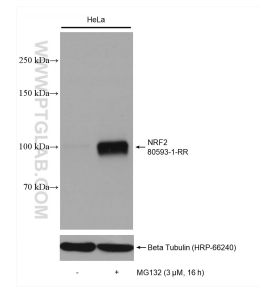
## Données de validation sélectionnées



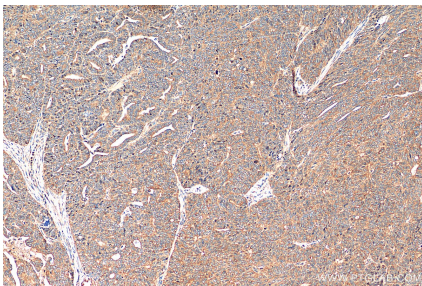
Untreated and MG132 treated HEK-293 cells were subjected to SDS PAGE followed by western blot with 80593-1-RR (NRF2, NFE2L2 antibody) at dilution of 1:2500 incubated at room temperature for 1.5 hours.



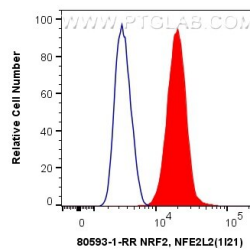
Untreated and MG132 treated HepG2 cells were subjected to SDS PAGE followed by western blot with 80593-1-RR (NRF2, NFE2L2 antibody) at dilution of 1:2500 incubated at room temperature for 1.5 hours.



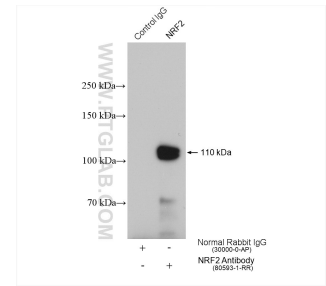
Untreated and MG132 treated HeLa cells were subjected to SDS PAGE followed by western blot with 80593-1-RR (NRF2, NFE2L2 antibody) at dilution of 1:2500 incubated at room temperature for 1.5 hours.



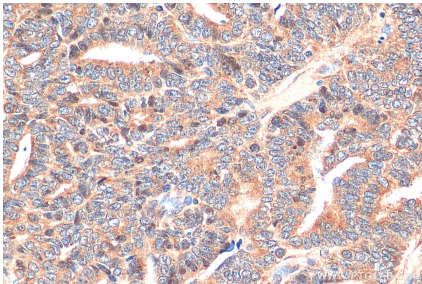
Immunohistochemical analysis of paraffin-embedded human ovary tumor tissue slide using 80593-1-RR (NRF2, NFE2L2 antibody) at dilution of 1:400 (under 10x lens). Heat mediated antigen retrieval with Tris-EDTA buffer (pH 9.0).



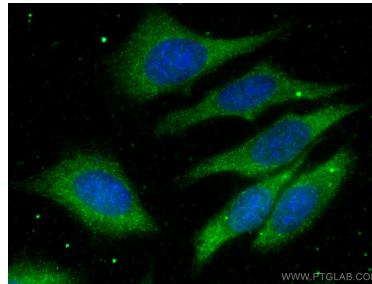
1X10<sup>6</sup> MCF-7 cells were intracellularly stained with 0.4 ug Anti-Human NRF2, NFE2L2 (80593-1-RR, Clone:1121) and CoraLite®488-Conjugated AffiniPure Goat Anti-Rabbit IgG(H+L) at dilution 1:1000 (red), or 0.4 ug Isotype Control. Cells were fixed and permeabilized with Transcription Factor Staining Buffer Kit (PF00011).



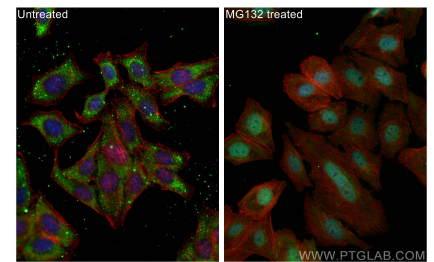
IP result of anti-NRF2, NFE2L2 (IP:80593-1-RR, 4ug; Detection:80593-1-RR 1:800) with HeLa cells lysate 2520 ug.



Immunohistochemical analysis of paraffin-embedded human ovary tumor tissue slide using 80593-1-RR (NRF2, NFE2L2 antibody) at dilution of 1:400 (under 40x lens). Heat mediated antigen retrieval with Tris-EDTA buffer (pH 9.0).



Immunofluorescent analysis of (-20°C Methanol) fixed HepG2 cells using NRF2, NFE2L2 antibody (80593-1-RR, Clone: 1121) at dilution of 1:200 and CoraLite®488-Conjugated AffiniPure Goat Anti-Rabbit IgG(H+L).



Immunofluorescent analysis of (-20°C Ethanol) fixed MG132 treated HepG2 cells using NRF2, NFE2L2 antibody (80593-1-RR, Clone: 1121) at dilution of 1:600 and CoraLite®488-Conjugated AffiniPure Goat Anti-Rabbit IgG(H+L), CL594-Phalloidin (red).