

À des fins de recherche uniquement

# Anticorps Recombinant de lapin anti-Beta Tubulin



Numéro de catalogue: 80713-1-RR

1 Publications

## Informations de base

Numéro de catalogue: 80713-1-RR	Numéro d'acquisition GenBank: BC000748	Méthode de purification: Purification par protéine A
Taille: 100ul , Concentration: 500 µg/ml by Nanodrop;	Identification du gène (NCBI): 10381	CloneNo.: 2013
Hôte: Lapin	Nom complet: tubulin, beta 3	Dilutions recommandées: WB 1:5000-1:50000 IP 0.5-4.0 ug for IP and 1:5000-1:50000 for WB
Isotype: IgG	MW calculé: 450 aa, 50 kDa	IF 1:250-1:1000
Immunogen Catalog Number: AG0117	MW observés: 50-55 kDa	

## Applications

Applications testées: FC, IF, IP, WB, ELISA	Contrôles positifs:
Demandes citées: IF	WB : cellules HeLa, cellules HEK-293, cellules HSC-T6, cellules Jurkat, cellules K-562, cellules NIH/3T3, cerveau de rat, cerveau de souris, tissu de poisson- zèbre
Spécificité de l'espèce: Humain, poisson-zèbre, rat, souris	IP : cellules HEK-293,
Espèces citées: Humain	IF : cellules C2C12, cellules HeLa

## Informations générales

### Publications notables

Autrice	Pubmed ID	Journal	Application
Hidetaka Togo	36672213	Cells	IF

## Stockage

**Stockage:**  
Stocker à -20°C. Stable pendant un an après l'expédition.  
**Tampon de stockage:**  
PBS avec azoture de sodium à 0,02 % et glycérol à 50 % pH 7,3  
L'aliquotage n'est pas nécessaire pour le stockage à -20C

\*\*\* Les 20ul contiennent 0,1% de BSA.

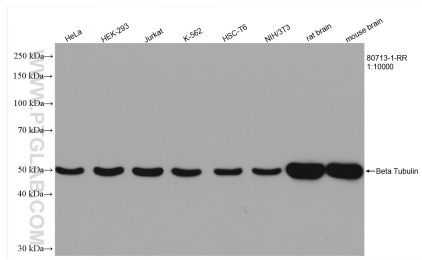
For technical support and original validation data for this product please contact:

T: 1 (888) 4PTGLAB (1-888-478-4522) (toll free  
in USA), or 1(312) 455-8498 (outside USA)

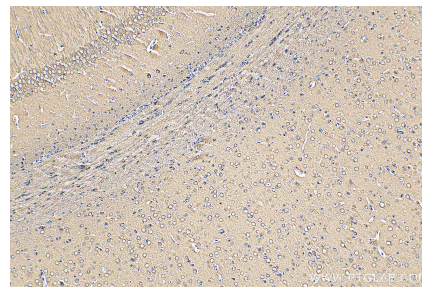
E: [proteintech@ptglab.com](mailto:proteintech@ptglab.com)  
W: [ptglab.com](http://ptglab.com)

This product is exclusively available under Proteintech Group brand and is not available to purchase from any other manufacturer.

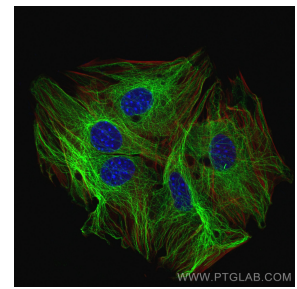
## Données de validation sélectionnées



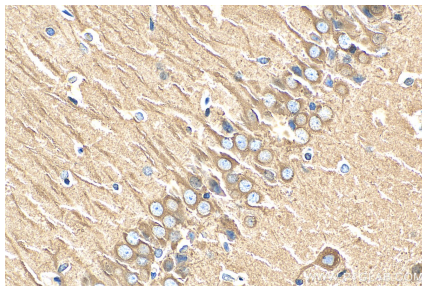
Various lysates were subjected to SDS PAGE followed by western blot with 80713-1-RR (Beta Tubulin antibody) at dilution of 1:10000 incubated at room temperature for 1.5 hours.



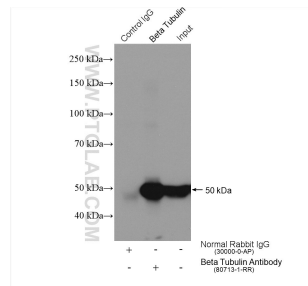
Immunohistochemical analysis of paraffin-embedded rat brain tissue slide using 80713-1-RR (Beta Tubulin antibody) at dilution of 1:1000 (under 10x lens). Heat mediated antigen retrieval with Tris-EDTA buffer (pH 9.0).



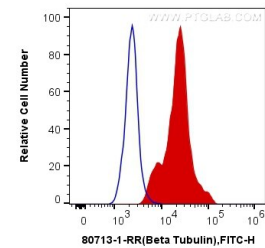
Immunofluorescent analysis of (4% PFA) fixed C2C12 cells using Beta Tubulin antibody (80713-1-RR, Clone: 2013) at dilution of 1:500 and CoraLite@488-Conjugated AffiniPure Goat Anti-Rabbit IgG(H+L), CL594-Phalloidin (red).



Immunohistochemical analysis of paraffin-embedded rat brain tissue slide using 80713-1-RR (Beta Tubulin antibody) at dilution of 1:1000 (under 40x lens). Heat mediated antigen retrieval with Tris-EDTA buffer (pH 9.0).



IP result of anti-Beta Tubulin(IP:80713-1-RR, 4ug; Detection:66240-1-Ig 1:10000) with HEK-293 cells lysate 1360 ug.



$1 \times 10^6$  HEK-293 cells were intracellularly stained with 0.2 ug Anti-Human Beta Tubulin (80713-1-RR, Clone:2013) and CoraLite@488-Conjugated AffiniPure Goat Anti-Rabbit IgG(H+L) at dilution 1:1000 (red), or 0.2 ug Control Antibody. Cells were fixed with 4% PFA and permeabilized with Flow Cytometry Perm Buffer (PF00011-C).