

À des fins de recherche uniquement

Anticorps Recombinant de lapin anti-SYNPO



Numéro de catalogue: 80721-1-RR

Informations de base

| | | | | | |
|---------------------------|--|--------------------------------|----------------|--------------------------|---------------------------------------|
| Numéro de catalogue: | 80721-1-RR | Numéro d'acquisition GenBank: | BC146665 | Méthode de purification: | Purification par protéine A |
| Taille: | 100ul, Concentration: 500 µg/ml by Nanodrop; | Identification du gène (NCBI): | 11346 | CloneNo.: | 4K5 |
| Hôte: | Lapin | Nom complet: | synaptopodin | Dilutions recommandées: | WB 1:2000-1:17800 IHC 1:500-1:2000 |
| Isotype: | IgG | MW calculé: | 929 aa, 99 kDa | | |
| Immunogen Catalog Number: | AG31287 | MW observés: | 100 kDa | | |

Applications

Applications testées:

IHC, WB, ELISA

Spécificité de l'espèce:

Humain, porc, rat, souris

Remarque-IHC: il est suggéré de démasquer l'antigène avec un tampon de TE buffer pH 9,0; (*) À défaut, 'le démasquage de l'antigène peut être effectué avec un tampon citrate pH 6,0.

Contrôles positifs:

WB : tissu cérébral de souris, tissu cérébral de porc, tissu cérébral de rat

IHC : tissu rénal humain, tissu cérébral de souris, tissu rénal de rat, tissu rénal de souris

Informations générales

Synaptopodin is a actin-associated protein expressed in mature dendritic spines and renal podocytes. Several isoforms of synaptopodin have been reported: the 100 kDa neural form and 110 kDa renal form. 44-45 kDa may represent the degradation product of synaptopodin. As a podocyte specific protein, synaptopodin expression level was decreased in kidney but increased in the urinary podocytes from patients with preeclampsia, indicating that synaptopodin is a useful marker for preeclampsia. (15841212, 10555072)

Stockage

Stockage:

Stocker à -20°C. Stable pendant un an après l'expédition.

Tampon de stockage:

PBS avec azoture de sodium à 0,02 % et glycérol à 50 % pH 7,3

L'aliquotage n'est pas nécessaire pour le stockage à -20C

*** Les 20ul contiennent 0,1% de BSA.

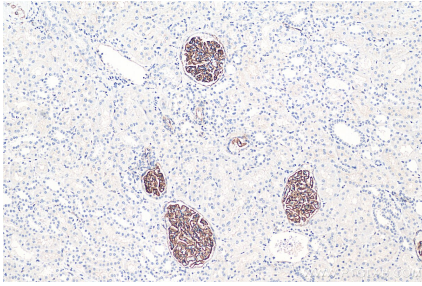
For technical support and original validation data for this product please contact:

T: 1 (888) 4PTGLAB (1-888-478-4522) (toll free in USA), or 1(312) 455-8498 (outside USA)

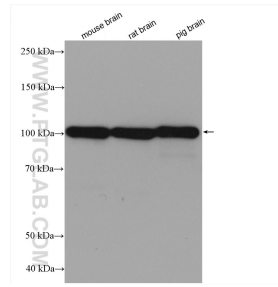
E: proteintech@ptglab.com
W: ptglab.com

This product is exclusively available under Proteintech Group brand and is not available to purchase from any other manufacturer.

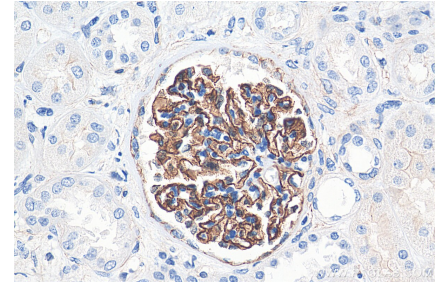
Données de validation sélectionnées



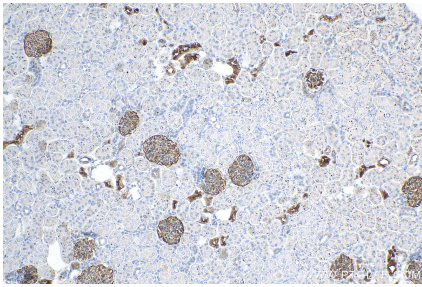
Immunohistochemical analysis of paraffin-embedded human kidney tissue slide using 80721-1-RR (SYNPO antibody) at dilution of 1:1000 (under 10x lens). Heat mediated antigen retrieval with Tris-EDTA buffer (pH 9.0).



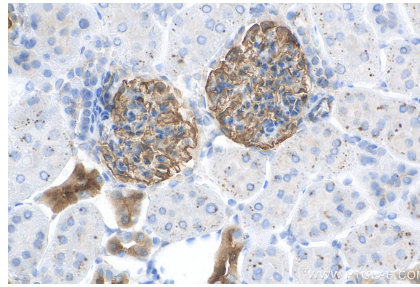
Various lysates were subjected to SDS PAGE followed by western blot with 80721-1-RR (SYNPO antibody) at dilution of 1:5000 incubated at room temperature for 1.5 hours.



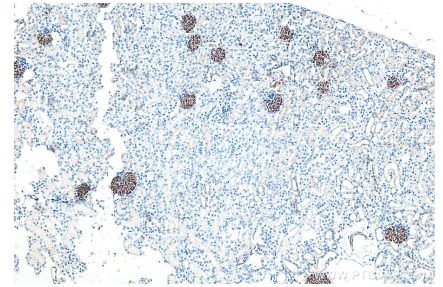
Immunohistochemical analysis of paraffin-embedded human kidney tissue slide using 80721-1-RR (SYNPO antibody) at dilution of 1:1000 (under 40x lens). Heat mediated antigen retrieval with Tris-EDTA buffer (pH 9.0).



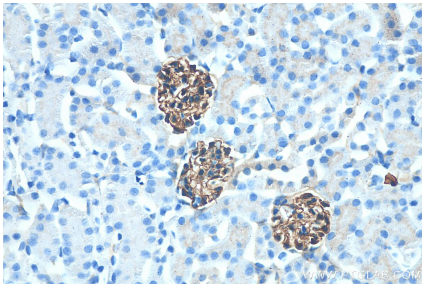
Immunohistochemical analysis of paraffin-embedded rat kidney tissue slide using 80721-1-RR (SYNPO antibody) at dilution of 1:200 (under 10x lens). Heat mediated antigen retrieval with Tris-EDTA buffer (pH 9.0).



Immunohistochemical analysis of paraffin-embedded rat kidney tissue slide using 80721-1-RR (SYNPO antibody) at dilution of 1:200 (under 40x lens). Heat mediated antigen retrieval with Tris-EDTA buffer (pH 9.0).



Immunohistochemical analysis of paraffin-embedded mouse kidney tissue slide using 80721-1-RR (SYNPO antibody) at dilution of 1:1000 (under 10x lens). Heat mediated antigen retrieval with Tris-EDTA buffer (pH 9.0).



Immunohistochemical analysis of paraffin-embedded mouse kidney tissue slide using 80721-1-RR (SYNPO antibody) at dilution of 1:1000 (under 40x lens). Heat mediated antigen retrieval with Tris-EDTA buffer (pH 9.0).