

À des fins de recherche uniquement

Anticorps Recombinant de lapin anti-Alpha Tubulin



Numéro de catalogue: 80762-1-RR

Phare

3 Publications

Informations de base

Numéro de catalogue: 80762-1-RR	Numéro d'acquisition GenBank: BC009314	Méthode de purification: Purification par protéine A
Taille: 100ul, Concentration: 1000 µg/ml by Nanodrop;	Identification du gène (NCBI): 10376	CloneNo.: 1G7
Hôte: Lapin	Nom complet: tubulin, alpha 1b	Dilutions recommandées: WB 1:5000-1:50000 IF 1:500-1:2000
Isotype: IgG	MW calculé: 50 kDa	
Immunogen Catalog Number: AG18034	MW observés: 50-55 kDa	

Applications

Applications testées:

IF, WB, ELISA

Demandes citées:

IF, WB

Spécificité de l'espèce:

Humain, rat, souris

Espèces citées:

Humain, souris

Contrôles positifs:

WB : cellules HeLa, cellules HEK-293, cellules HSC-T6, cellules Jurkat, cellules K-562, cellules NIH/3T3, cerveau de rat, cerveau de souris

IF : cellules C2C12,

Informations générales

There are five tubulins in human cells: alpha, beta, gamma, delta, and epsilon. Tubulins are conserved across species. They form heterodimers, which multimerize to form a microtubule filament. An alpha and beta tubulin heterodimer is the basic structural unit of microtubules. The heterodimer does not come apart once formed. The alpha and beta tubulins, which are each about 55 kDa MW, are homologous but not identical. Alpha tubulin is useful for scientists across fields as an internal control due to its high, ubiquitous expression pattern.

Publications notables

Autrice	Pubmed ID	Journal	Application
Danjie Liu	35859853	Dose Response	WB
Cheng Chen	37417356	Mol Med Rep	WB
Aleksandra Klimas	36593399	Nat Biotechnol	IF

Stockage

Stockage:

Stocker à -20°C. Stable pendant un an après l'expédition.

Tampon de stockage:

PBS avec azoture de sodium à 0,02 % et glycérol à 50 % pH 7,3

L'aliquotage n'est pas nécessaire pour le stockage à -20C

*** Les 20ul contiennent 0,1% de BSA.

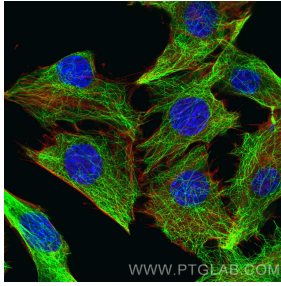
For technical support and original validation data for this product please contact:

T: 1 (888) 4PTGLAB (1-888-478-4522) (toll free in USA), or 1(312) 455-8498 (outside USA)

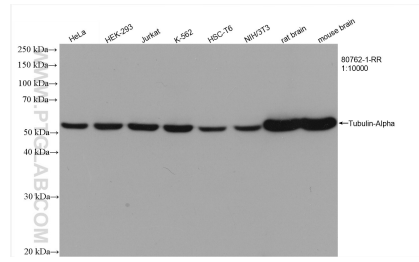
E: proteintech@ptglab.com
W: ptglab.com

This product is exclusively available under Proteintech Group brand and is not available to purchase from any other manufacturer.

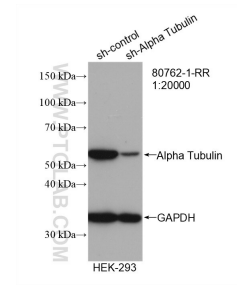
Données de validation sélectionnées



Immunofluorescent analysis of (4% PFA) fixed C2C12 cells using Alpha Tubulin antibody (80762-1-RR, Clone: 1G7) at dilution of 1:1000 and CoraLite®488-Conjugated AffiniPure Goat Anti-Rabbit IgG(H+L), CL594-Phalloidin (red).



Various lysates were subjected to SDS PAGE followed by western blot with 80762-1-RR (Tubulin-Alpha antibody) at dilution of 1:10000 incubated at room temperature for 1.5 hours.



WB result of Alpha Tubulin antibody (80762-1-RR; 1:20000; incubated at room temperature for 1.5 hours) with sh-Control and sh-Alpha Tubulin transfected HEK-293 cells.