

À des fins de recherche uniquement

# Anticorps Recombinant de lapin anti-GSDMD



Numéro de catalogue: 80918-1-RR

## Informations de base

Numéro de catalogue: 80918-1-RR	Numéro d'acquisition GenBank: BC008904	Méthode de purification: Purification par protéine A
Taille: 100ul, Concentration: 1000 µg/ml by Nanodrop;	Identification du gène (NCBI): 79792	CloneNo.: 2N24
Hôte: Lapin	Nom complet: gasdermin D	Dilutions recommandées: WB 1:5000-1:50000
Isotype: IgG	MW calculé 484 aa, 53 kDa	
Immunogen Catalog Number: AG14757	MW observés: 50-53 kDa	

## Applications

Applications testées: FC, WB, ELISA	Contrôles positifs: WB : cellules HeLa, cellules A549, cellules Jurkat
Spécificité de l'espèce: Humain	

## Informations générales

GSDMD is a member of the gasdermin family. Members of this family appear to play a role in regulation of epithelial proliferation. GSDMD has been suggested to act as a tumor suppressor. Recently, GSDMD is identified as a new component of inflammasomes, and it is an executor of pyroptosis and required for interleukin-1 $\beta$  secretion. Cleavage of GSDMD by inflammatory caspases determines pyroptotic cell death.

## Stockage

**Stockage:**  
Stocker à -20°C. Stable pendant un an après l'expédition.  
**Tampon de stockage:**  
PBS avec azoture de sodium à 0,02 % et glycérol à 50 % pH 7,3  
L'aliquotage n'est pas nécessaire pour le stockage à -20C

**\*\*\* Les 20ul contiennent 0,1% de BSA.**

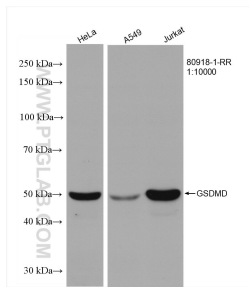
For technical support and original validation data for this product please contact:

T: 1 (888) 4PTGLAB (1-888-478-4522) (toll free  
in USA), or 1(312) 455-8498 (outside USA)

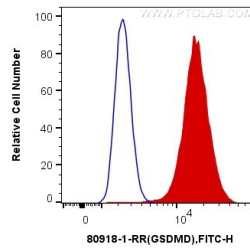
E: [proteintech@ptglab.com](mailto:proteintech@ptglab.com)  
W: [ptglab.com](http://ptglab.com)

**This product is exclusively available under Proteintech Group brand and is not available to purchase from any other manufacturer.**

## Données de validation sélectionnées



Various lysates were subjected to SDS PAGE followed by western blot with 80918-1-RR (GSDMD antibody) at dilution of 1:10000 incubated at room temperature for 1.5 hours.



$1 \times 10^6$  RAW 264.7 cells were intracellularly stained with 0.4  $\mu$ g Anti-Human GSDMD (80918-1-RR, Clone:2N24) and CoraLite@488-Conjugated AffiniPure Goat Anti-Rabbit IgG(H+L) at dilution 1:1000 (red), or 0.4  $\mu$ g Control Antibody. Cells were fixed with 4% PFA and permeabilized with Flow Cytometry Perm Buffer (PF00011-C).