

À des fins de recherche uniquement

Anticorps Recombinant de lapin anti-Ribosomal protein L4



Numéro de catalogue: 80959-1-RR

Informations de base

Numéro de catalogue: 80959-1-RR	Numéro d'acquisition GenBank: BC009888	Méthode de purification: Purification par protéine A
Taille: 100ul, Concentration: 1000 µg/ml by Nanodrop;	Identification du gène (NCBI): 6124	CloneNo.: 3K6
Hôte: Lapin	Nom complet: ribosomal protein L4	Dilutions recommandées: WB 1:5000-1:50000 IP 0.5-4.0 ug for IP and 1:1000-1:4000 for WB
Isotype: IgG	MW calculé: 48 kDa	IF 1:200-1:800
Immunogen Catalog Number: AG28728	MW observés: 48 kDa	

Applications

Applications testées:

IF, IP, WB, ELISA

Spécificité de l'espèce:

Humain

Contrôles positifs:

WB : cellules HEK-293, cellules HeLa, cellules HepG2, cellules Jurkat, cellules K-562, cellules U2OS

IP : cellules HeLa,

IF : cellules HepG2,

Informations générales

60S ribosomal protein L4 is encoded by RPL4 (or RPL1) gene. RPL4 is a component of 60S subunit of ribosome, and belongs to the L4E family. By interacting with c-Myb, RPL4 plays a important role in c-myc expression in response to growth factor and nutritional signals. Recently RPL4 was reported to be able to increase efficiency of viral recoding sequence.

Stockage

Stockage:

Stocker à -20°C. Stable pendant un an après l'expédition.

Tampon de stockage:

PBS avec azoture de sodium à 0,02 % et glycérol à 50 % pH 7,3

L'aliquotage n'est pas nécessaire pour le stockage à -20C

*** Les 20ul contiennent 0,1% de BSA.

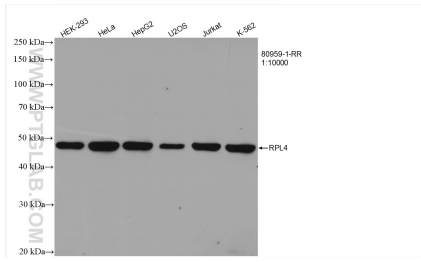
For technical support and original validation data for this product please contact:

T: 1 (888) 4PTGLAB (1-888-478-4522) (toll free
in USA), or 1(312) 455-8498 (outside USA)

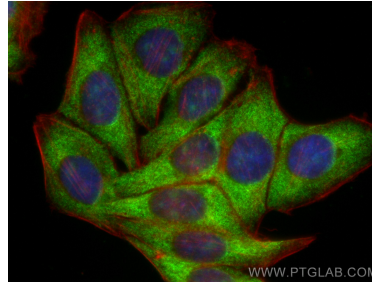
E: proteintech@ptglab.com
W: ptglab.com

This product is exclusively available under Proteintech Group brand and is not available to purchase from any other manufacturer.

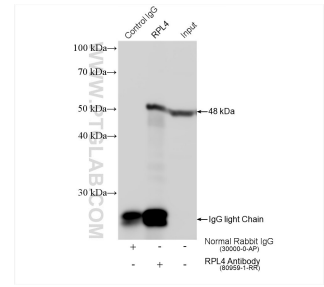
Données de validation sélectionnées



Various lysates were subjected to SDS PAGE followed by western blot with 80959-1-RR (RPL4 antibody) at dilution of 1:10000 incubated at room temperature for 1.5 hours.



Immunofluorescent analysis of (4% PFA) fixed HepG2 cells using Ribosomal protein L4 antibody (80959-1-RR, Clone: 3K6) at dilution of 1:400 and CoraLite®488-Conjugated AffiniPure Goat Anti-Rabbit IgG(H+L), CL594-Phalloidin (red).



IP result of anti-Ribosomal protein L4(IP:80959-1-RR, 4ug; Detection:80959-1-RR 1:2000) with HeLa cells lysate 1560 ug.