

À des fins de recherche uniquement

# Anticorps Recombinant de lapin anti-ubiquitin



Numéro de catalogue: 80992-1-RR

3 Publications

## Informations de base

Numéro de catalogue: 80992-1-RR	Numéro d'acquisition GenBank: BC000379	Méthode de purification: Purification par protéine A
Taille: 100ul, Concentration: 1000 µg/ml by Nanodrop;	Identification du gène (NCBI): 7314	CloneNo.: 6H6
Hôte: Lapin	Nom complet: ubiquitin B	Dilutions recommandées: WB 1:5000-1:50000 IHC 1:50-1:500 IF 1:500-1:2000
Isotype: IgG	MW calculé 26 kDa	
Immunogen Catalog Number: AG0260		

## Applications

<b>Applications testées:</b> IF, IHC, WB, ELISA	<b>Contrôles positifs:</b> WB : MG132 treated HeLa cells, cellules HeLa IHC : tissu de cancer du pancréas humain, IF : cellules HeLa,
<b>Demands citées:</b> IP, WB	
<b>Spécificité de l'espèce:</b> chien, Humain, levure, rat, souris, Hamster	
<b>Espèces citées:</b> Humain	

**Remarque-IHC: il est suggéré de démasquer l'antigène avec un tampon de TE buffer pH 9,0; (\*) À défaut, 'le démasquage de l'antigène peut être effectué avec un tampon citrate pH 6,0.**

## Informations générales

Ubiquitin B (UBB) is a member of ubiquitin family, one of the most conserved proteins known. Ubiquitin B is required for ATP-dependent, non-lysosomal intracellular protein degradation of abnormal proteins and normal proteins with a rapid turnover. Ubiquitin B is covalently bound to proteins to be degraded, and presumably labels these proteins for degradation. Ubiquitin also binds to histone H2A in actively transcribed regions but does not cause histone H2A degradation, suggesting that ubiquitin is also involved in regulation of gene expression. When polyubiquitin is free (unanchored-polyubiquitin), it also has distinct roles, such as in activation of protein kinases, and in signaling. This gene consists of three direct repeats of the ubiquitin coding sequence with no spacer sequence. Consequently, the protein is expressed as a polyubiquitin precursor with a final amino acid after the last repeat. Aberrant form of this protein has been noticed in patients with Alzheimer's and Down syndrome. Interestingly ubiquitin also becomes covalently bonded to many types of pathological inclusions which appear to be resistant to normal degradation.

## Publications notables

Autrice	Pubmed ID	Journal	Application
Xuejie Li	37540409	Clin Transl Oncol	IP
Chiachen Chen	37301315	Cell Signal	WB
Yichen Tong	37267712	J Med Chem	WB

## Stockage

**Stockage:**  
Stocker à -20°C. Stable pendant un an après l'expédition.  
**Tampon de stockage:**  
PBS avec azoture de sodium à 0,02 % et glycérol à 50 % pH 7,3  
L'aliquotage n'est pas nécessaire pour le stockage à -20C

\*\*\* Les 20ul contiennent 0,1% de BSA.

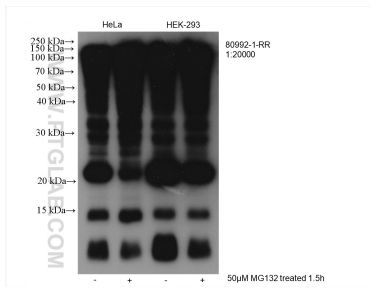
For technical support and original validation data for this product please contact:

T: 1 (888) 4PTGLAB (1-888-478-4522) (toll free in USA), or 1(312) 455-8498 (outside USA)

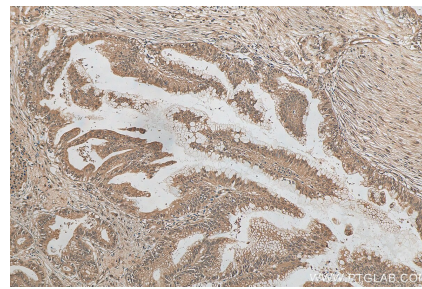
E: proteintech@ptglab.com  
W: ptglab.com

This product is exclusively available under Proteintech Group brand and is not available to purchase from any other manufacturer.

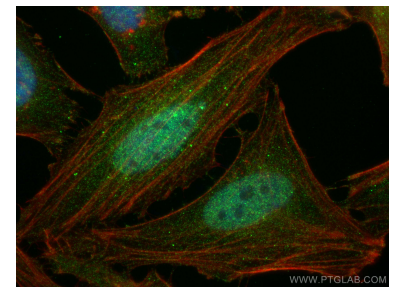
## Données de validation sélectionnées



Various lysates were subjected to SDS PAGE followed by western blot with 80992-1-RR (ubiquitin antibody) at dilution of 1:20000 incubated at room temperature for 1.5 hours.



Immunohistochemical analysis of paraffin-embedded human pancreas cancer tissue slide using 80992-1-RR (ubiquitin antibody) at dilution of 1:200 (under 10x lens). Heat mediated antigen retrieval with Tris-EDTA buffer (pH 9.0).



Immunofluorescent analysis of (4% PFA) fixed HeLa cells using ubiquitin antibody (80992-1-RR, Clone: 6H6) at dilution of 1:1000 and CoraLite®488-Conjugated AffiniPure Goat Anti-Rabbit IgG(H+L), CL594-phalloidin (red).