

À des fins de recherche uniquement

Anticorps Recombinant de lapin anti-CAMK2D



Numéro de catalogue: 81014-1-RR

Informations de base

Numéro de catalogue: 81014-1-RR	Numéro d'acquisition GenBank: BC032784	Méthode de purification: Purification par protéine A
Taille: 100ul , Concentration: 1000 µg/ml by Nanodrop;	Identification du gène (NCBI): 817	CloneNo.: 1M10
Hôte: Lapin	Nom complet: calcium/calmodulin-dependent protein kinase II delta	Dilutions recommandées: WB 1:5000-1:50000
Isotype: IgG	MW calculé 56 kDa	
Immunogen Catalog Number: AG31276	MW observés: 54-59 kDa	

Applications

Applications testées:
WB, ELISA
Spécificité de l'espèce:
Humain, porc, rat, souris

Contrôles positifs:

WB : tissu cérébral de rat, tissu cérébral de porc, tissu
cérébral de souris

Informations générales

CaMKII delta, also named as CAMKD, belongs to the protein kinase superfamily, CAMK Ser/Thr protein kinase family and CaMK subfamily. CaM-kinase II (CAMK2) is a prominent kinase in the central nervous system that may function in long-term potentiation and neurotransmitter release, composed of four different chains: alpha, beta, gamma, and delta. The CAMK2 protein kinases contain a unique C-terminal subunit association domain responsible for oligomerization. The different chains assemble into homo-or heteromultimeric holoenzymes composed of 8 to 12 subunits. This antibody is specific to the C-term of delta chain, CaMKII delta. It may also recognize CAMK2A due to the high homology.

Stockage

Stockage:
Stocker à -20 °C
Tampon de stockage:
PBS avec azoture de sodium à 0,02 % et glycérol à 50 % pH 7,3
L'aliquotage n'est pas nécessaire pour le stockage à -20C

***** Les 20ul contiennent 0,1% de BSA.**

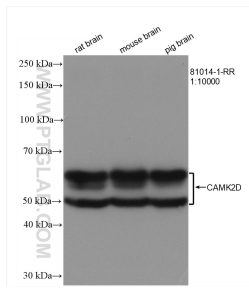
For technical support and original validation data for this product please contact:

T: 1 (888) 4PTGLAB (1-888-478-4522) (toll free
in USA), or 1(312) 455-8498 (outside USA)

E: proteintech@ptglab.com
W: ptglab.com

This product is exclusively available under Proteintech Group brand and is not available to purchase from any other manufacturer.

Données de validation sélectionnées



Various lysates were subjected to SDS PAGE followed by western blot with 81014-1-RR (CAMK2D antibody) at dilution of 1:10000 incubated at room temperature for 1.5 hours.