

À des fins de recherche uniquement

Anticorps Recombinant de lapin anti-Lamin A/C



Numéro de catalogue: 81042-1-RR

Phare

Informations de base

Numéro de catalogue:	81042-1-RR	Numéro d'acquisition GenBank:	BC003162	Méthode de purification:	Purification par protéine A
Taille:	100ul, Concentration: 1000 µg/ml by Nanodrop;	Identification du gène (NCBI):	4000	CloneNo.:	5I16
Hôte:	Lapin	Nom complet:	lamin A/C	Dilutions recommandées:	WB 1:20000-1:100000 IHC 1:3000-1:12000 IF 1:500-1:2000
Isotype:	IgG	MW calculé:	65 kDa		
Immunogen Catalog Number:	AG0408	MW observés:	65-70 kDa		

Applications

Applications testées:

IF, IHC, WB, ELISA

Spécificité de l'espèce:

Humain, rat, souris

Remarque-IHC: il est suggéré de démasquer l'antigène avec un tampon de TE buffer pH 9,0; (*) À défaut, 'le démasquage de l'antigène peut être effectué avec un tampon citrate pH 6,0.

Contrôles positifs:

WB : cellules HepG2, cellules A431, cellules C6, cellules HeLa, cellules HSC-T6, cellules HUVEC, cellules NIH/3T3, cellules RAW 264.7, cellules SKOV-3

IHC : tissu cardiaque de souris,

IF : cellules HepG2,

Informations générales

Lamin A/C is also named as LMNA, or LMN1. The lamin family of proteins make up the matrix and are highly conserved in evolution. During mitosis, the lamina matrix is reversibly disassembled as the lamin proteins are phosphorylated. Lamin proteins are thought to be involved in nuclear stability, chromatin structure and gene expression. The lack of lamin A/C can be as a novel marker for undifferentiated embryonic stem cells and lamin A/C expression is as an early indicator of differentiation (PMID: 16179429). Mutations in this gene lead to several diseases: Emery-Dreifuss muscular dystrophy, familial partial lipodystrophy, limb girdle muscular dystrophy, dilated cardiomyopathy, Charcot-Marie-Tooth disease, and Hutchinson-Gilford progeria syndrome. This protein has 4 isoforms produced by alternative splicing with the molecular weight of 74 kDa, 65 kDa, 70 kDa and 64 kDa. This antibody can recognize 4 isoforms of Lamin A/C.

Stockage

Stockage:

Stocker à -20°C. Stable pendant un an après l'expédition.

Tampon de stockage:

PBS avec azoture de sodium à 0,02 % et glycérol à 50 % pH 7,3

L'aliquotage n'est pas nécessaire pour le stockage à -20C

*** Les 20ul contiennent 0,1% de BSA.

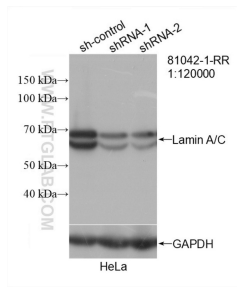
For technical support and original validation data for this product please contact:

T: 1 (888) 4PTGLAB (1-888-478-4522) (toll free in USA), or 1(312) 455-8498 (outside USA)

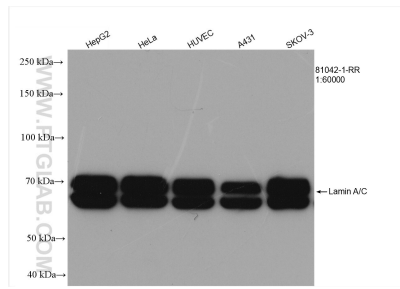
E: proteintech@ptglab.com
W: ptglab.com

This product is exclusively available under Proteintech Group brand and is not available to purchase from any other manufacturer.

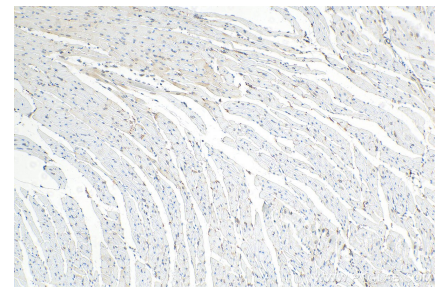
Données de validation sélectionnées



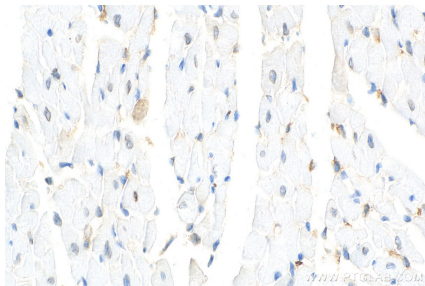
WB result of Lamin A/C antibody (81042-1-RR; 1:120000; incubated at room temperature for 1.5 hours) with sh-Control and sh-Lamin A/C transfected HeLa cells.



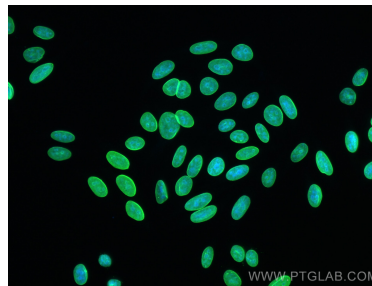
Various lysates were subjected to SDS PAGE followed by western blot with 81042-1-RR (Lamin A/C antibody) at dilution of 1:60000 incubated at room temperature for 1.5 hours.



Immunohistochemical analysis of paraffin-embedded mouse heart tissue slide using 81042-1-RR (Lamin A/C antibody) at dilution of 1:6000 (under 10x lens). Heat mediated antigen retrieval with Tris-EDTA buffer (pH 9.0).



Immunohistochemical analysis of paraffin-embedded mouse heart tissue slide using 81042-1-RR (Lamin A/C antibody) at dilution of 1:6000 (under 40x lens). Heat mediated antigen retrieval with Tris-EDTA buffer (pH 9.0).



Immunofluorescent analysis of (-20°C Methanol) fixed HepG2 cells using Lamin A/C antibody (81042-1-RR, Clone: 5116) at dilution of 1:1000 and CoraLite® 488-Conjugated AffiniPure Goat Anti-Rabbit IgG(H+L).