

À des fins de recherche uniquement

Anticorps Recombinant de lapin anti-AFP



Numéro de catalogue: 81083-1-RR

Phare

Informations de base

Numéro de catalogue: 81083-1-RR	Numéro d'acquisition GenBank: BC027881	Méthode de purification: Purification par protéine A
Taille: 100ul, Concentration: 1000 µg/ml by Nanodrop;	Identification du gène (NCBI): 174	CloneNo.: 2D17
Hôte: Lapin	Nom complet: alpha-fetoprotéin	Dilutions recommandées: WB 1:5000-1:50000 IHC 1:50-1:500
Isotype: IgG	MW calculé 69 kDa	
Immunogen Catalog Number: AG6089	MW observés: 68-72 kDa	

Applications

Applications testées:

IHC, WB, ELISA

Spécificité de l'espèce:

Humain

Remarque-IHC: il est suggéré de démasquer l'antigène avec un tampon de TE buffer pH 9,0; (*) À défaut, 'le démasquage de l'antigène peut être effectué avec un tampon citrate pH 6,0.

Contrôles positifs:

WB : cellules HepG2, cellules HuH-7, tissu placentaire humain

IHC : tissu de cancer du côlon humain,

Informations générales

AFP, also known as Alpha-fetoprotein, is a major plasma protein in the fetus and its concentration is very low in the adult (PubMed:24120489). AFP is considered a marker of hepatocyte precursors. AFP can be detected at abnormally high concentrations in hepatocellular carcinomas as well as in the plasma and ascitic fluid of adults with hepatoma. High AFP concentrations have been correlated with tumor cell growth, indicating that AFP can serve as a tumor marker (PubMed: 18669658).

Stockage

Stockage:

Stocker à -20°C. Stable pendant un an après l'expédition.

Tampon de stockage:

PBS avec azoture de sodium à 0,02 % et glycérol à 50 % pH 7,3

L'aliquotage n'est pas nécessaire pour le stockage à -20C

*** Les 20ul contiennent 0,1% de BSA.

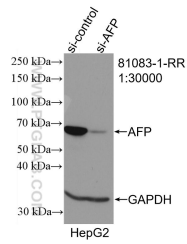
For technical support and original validation data for this product please contact:

T: 1 (888) 4PTGLAB (1-888-478-4522) (toll free in USA), or 1(312) 455-8498 (outside USA)

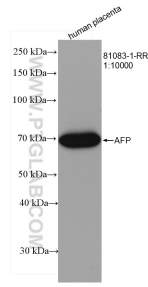
E: proteintech@ptglab.com
W: ptglab.com

This product is exclusively available under Proteintech Group brand and is not available to purchase from any other manufacturer.

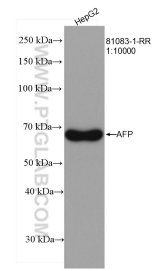
Données de validation sélectionnées



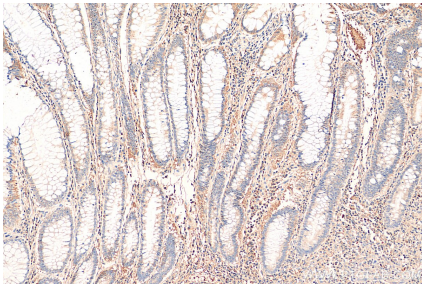
WB result of AFP antibody (81083-1-RR; 1:14000; incubated at room temperature for 1.5 hours) with sh-Control and sh-AFP transfected HepG2 cells.



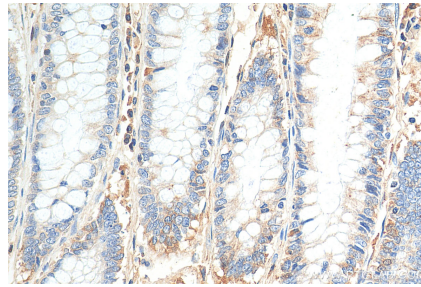
human placenta were subjected to SDS PAGE followed by western blot with 81083-1-RR (AFP antibody) at dilution of 1:10000 incubated at room temperature for 1.5 hours.



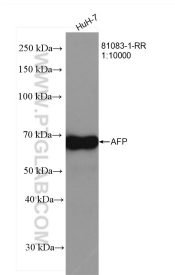
HepG2 cells were subjected to SDS PAGE followed by western blot with 81083-1-RR (AFP antibody) at dilution of 1:10000 incubated at room temperature for 1.5 hours.



Immunohistochemical analysis of paraffin-embedded human colon cancer tissue slide using 81083-1-RR (AFP antibody) at dilution of 1:200 (under 10x lens). Heat mediated antigen retrieval with Tris-EDTA buffer (pH 9.0).



Immunohistochemical analysis of paraffin-embedded human colon cancer tissue slide using 81083-1-RR (AFP antibody) at dilution of 1:200 (under 40x lens). Heat mediated antigen retrieval with Tris-EDTA buffer (pH 9.0).



HuH-7 cells were subjected to SDS PAGE followed by western blot with 81083-1-RR (AFP antibody) at dilution of 1:10000 incubated at room temperature for 1.5 hours.