

À des fins de recherche uniquement

# Anticorps Recombinant de lapin anti-Beta Actin



Numéro de catalogue: 81115-1-RR

114 Publications

## Informations de base

Numéro de catalogue: 81115-1-RR	Numéro d'acquisition GenBank: BC002409	Méthode de purification: Purification par protéine A
Taille: 100ul , Concentration: 1000 µg/ml by Nanodrop;	Identification du gène (NCBI): 60	CloneNo.: 4H1
Hôte: Lapin	Nom complet: actin, beta	Dilutions recommandées: WB 1:5000-1:50000 IHC 1:1000-1:4000 IF 1:950-1:3800
Isotype: IgG	MW calculé: 375 aa, 42 kDa	
Immunogen Catalog Number: AG14521	MW observés: 42 kDa	

## Applications

### Applications testées:

IF, IHC, WB, ELISA

### Demandes citées:

IF, WB

### Spécificité de l'espèce:

Humain, porc, rat, souris

### Espèces citées:

Humain, porc, poulet, rat, souris

**Remarque-IHC: il est suggéré de démasquer l'antigène avec un tampon de TE buffer pH 9,0; (\*) À défaut, 'le démasquage de l'antigène peut être effectué avec un tampon citrate pH 6,0.**

### Contrôles positifs:

WB : cellules HeLa, cellules HEK-293, cellules HSC-T6, cellules Jurkat, cellules NIH/3T3, tissu cérébral de porc, tissu cérébral de rat, tissu cérébral de souris

IHC : tissu de côlon de rat,

IF : cellules U2OS, cellules A549

## Informations générales

Beta Actin, also named as ACTB and F-Actin, belongs to the actin family. Actins are highly conserved globular proteins that are involved in various types of cell motility and are ubiquitously expressed in all eukaryotic cells. At least six isoforms of actins are known in mammals and other vertebrates: alpha (ACTC1, cardiac muscle 1), alpha 1 (ACTA1, skeletal muscle) and 2 (ACTA2, aortic smooth muscle), beta (ACTB), gamma 1 (ACTG1) and 2 (ACTG2, enteric smooth muscle). Beta and gamma 1 are two non-muscle actin proteins. Most actins consist of 376aa, while ACTG2 (rich in muscles) has 375aa and ACTG1(found in non-muscle cells) has only 374aa. Beta actin has been widely used as the internal control in RT-PCR and Western Blotting as a 42-kDa protein. However, the 37-40, 31, 15 kDa cleaved fragment of beta actin can be generated during apoptosis process. This antibody was generated against N-terminal region of human beta actin protein and can cross-react with other actins. (9173887, 11217076, 10229193 )

## Publications notables

Autrice	Pubmed ID	Journal	Application
Xin Xu	36178722	Environ Toxicol	WB
Jiying Hou	36077440	Int J Mol Sci	WB
Jialiang Luo	36327873	Int Immunopharmacol	WB

## Stockage

### Stockage:

Stocker à -20°C. Stable pendant un an après l'expédition.

### Tampon de stockage:

PBS avec azoture de sodium à 0,02 % et glycérol à 50 % pH 7,3

L'aliquotage n'est pas nécessaire pour le stockage à -20C

\*\*\* Les 20ul contiennent 0,1% de BSA.

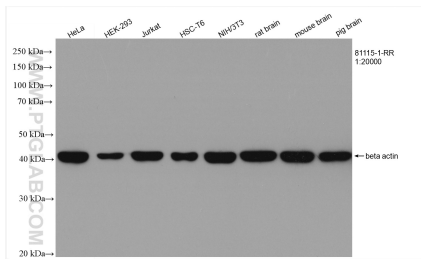
For technical support and original validation data for this product please contact:

T: 1 (888) 4PTGLAB (1-888-478-4522) (toll free in USA), or 1(312) 455-8498 (outside USA)

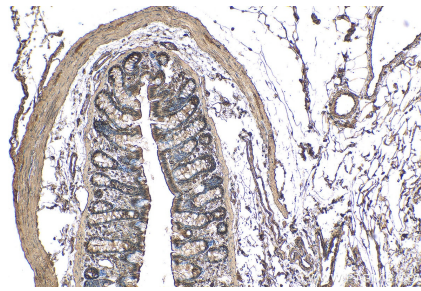
E: proteintech@ptglab.com  
W: ptglab.com

This product is exclusively available under Proteintech Group brand and is not available to purchase from any other manufacturer.

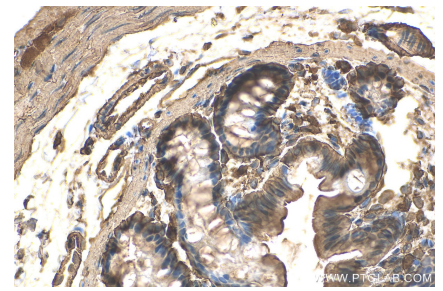
## Données de validation sélectionnées



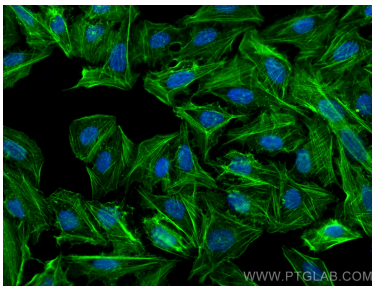
Various lysates were subjected to SDS PAGE followed by western blot with 81115-1-RR (beta actin antibody) at dilution of 1:20000 incubated at room temperature for 1.5 hours.



Immunohistochemical analysis of paraffin-embedded rat colon tissue slide using 81115-1-RR (Beta Actin antibody) at dilution of 1:2000 (under 10x lens). Heat mediated antigen retrieval with Tris-EDTA buffer (pH 9.0).



Immunohistochemical analysis of paraffin-embedded rat colon tissue slide using 81115-1-RR (Beta Actin antibody) at dilution of 1:2000 (under 40x lens). Heat mediated antigen retrieval with Tris-EDTA buffer (pH 9.0).



Immunofluorescent analysis of (4% PFA) fixed U2OS cells using beta actin antibody (81115-1-RR, Clone: 4H1 ) at dilution of 1:1900 and CoraLite®488-Conjugated AffiniPure Goat Anti-Rabbit IgG(H+L).