

À des fins de recherche uniquement

Anticorps Recombinant de lapin anti-STIM1



Numéro de catalogue: 81156-1-RR

Informations de base

Numéro de catalogue:	81156-1-RR	Numéro d'acquisition GenBank:	BC021300	Méthode de purification:	Purification par protéine A
Taille:	100ul, Concentration: 1000 µg/ml by Nanodrop;	Identification du gène (NCBI):	6786	CloneNo.:	1B13
Hôte:	Lapin	Nom complet:	stromal interaction molecule 1	Dilutions recommandées:	WB 1:5000-1:50000
Isotype:	IgG	MW calculé:	685 aa, 77 kDa		
Immunogen Catalog Number:	AG2140	MW observés:	77 kDa		

Applications

Applications testées:
WB, ELISA

Spécificité de l'espèce:
Humain, rat, souris

Contrôles positifs:

WB : cellules HeLa, cellules A549, cellules HepG2, cellules Jurkat, cellules K-562, cellules LNCaP, cellules Raji

Informations générales

STIM1, also named as GOK, is an ER Ca²⁺ sensor. Upon Ca²⁺ store depletion, STIM1 clusters at ER-plasma membrane junctions where it interacts with and gates Ca²⁺-permeable Orai1 ion channels. STIM1 is implicated in tumor growth suppression and stromal-haematopoietic cell interactions. Defects in STIM1 gene can cause immune dysfunction with impaired T-cell activation. STIM1 can inhibit L-type voltage-gated Ca(2+) channels in neurons. Temperature is an important regulator of STIM1 function.

Stockage

Stockage:
Stocker à -20 °C.
Tampon de stockage:
PBS avec azoture de sodium à 0,02 % et glycérol à 50 % pH 7,3
L'aliquotage n'est pas nécessaire pour le stockage à -20C

*** Les 20ul contiennent 0,1% de BSA.

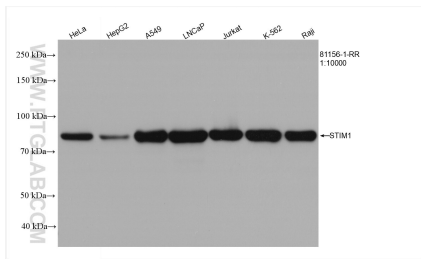
For technical support and original validation data for this product please contact:

T: 1 (888) 4PTGLAB (1-888-478-4522) (toll free in USA), or 1(312) 455-8498 (outside USA)

E: proteintech@ptglab.com
W: ptglab.com

This product is exclusively available under Proteintech Group brand and is not available to purchase from any other manufacturer.

Données de validation sélectionnées



Various lysates were subjected to SDS PAGE followed by western blot with 81156-1-RR (STIM1 antibody) at dilution of 1:10000 incubated at room temperature for 1.5 hours.