

À des fins de recherche uniquement

# Anticorps Recombinant de lapin anti- Phospho-S6 Ribosomal protein (Ser240/244)



Numéro de catalogue: **81184-1-RR**

## Informations de base

Numéro de catalogue: 81184-1-RR	Numéro d'acquisition GenBank: NM_001010	Méthode de purification: Purification par protéine A
Taille: 100ul , Concentration: 400 µg/ml by Nanodrop;	Identification du gène (NCBI): 6194	CloneNo.: 5J13
Hôte: Lapin	Nom complet: ribosomal protein S6	Dilutions recommandées: WB 1:5000-1:50000
Isotype: IgG	MW observés: 32 kDa	

## Applications

Applications testées:  
WB, ELISA  
Spécificité de l'espèce:  
Humain

### Contrôles positifs:

WB : cellules HeLa traitées à la calyculine A, cellules HEK-293 traitées à la calyculine A

## Informations générales

Ribosomal protein S6 (RPS6), also named Phosphoprotein NP33, may play an important role in controlling cell growth and proliferation through the selective translation of particular classes of mRNA. Ribosomal protein S6 is the major substrate of protein kinases in eukaryote ribosomes. The phosphorylation is stimulated by growth factors, tumor promoting agents, and mitogens and is dephosphorylated at growth arrest.

## Stockage

Stockage:  
Stocker à -20°C. Stable pendant un an après l'expédition.  
Tampon de stockage:  
PBS avec azoture de sodium à 0,02 % et glycérol à 50 % pH 7,3  
L'aliquotage n'est pas nécessaire pour le stockage à -20C

**\*\*\* Les 20ul contiennent 0,1% de BSA.**

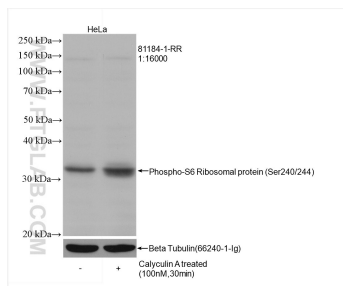
For technical support and original validation data for this product please contact:

T: 1 (888) 4PTGLAB (1-888-478-4522) (toll free  
in USA), or 1(312) 455-8498 (outside USA)

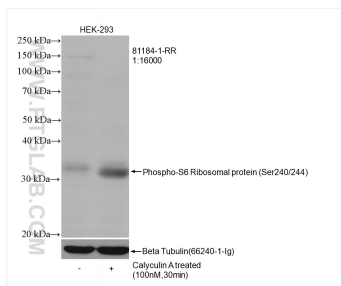
E: [proteintech@ptglab.com](mailto:proteintech@ptglab.com)  
W: [ptglab.com](http://ptglab.com)

**This product is exclusively available under Proteintech Group brand and is not available to purchase from any other manufacturer.**

## Données de validation sélectionnées



Non-treated and Calyculin A treated HeLa cells were subjected to SDS PAGE followed by western blot with 81184-1-RR (Phospho-S6 Ribosomal protein (Ser240/244) antibody) at dilution of 1:16000 incubated at room temperature for 1.5 hours. The membrane was stripped and re-blotted with GAPDH antibody as the loading control.



Non-treated and Calyculin A treated HEK-293 cells were subjected to SDS PAGE followed by western blot with 81184-1-RR (Phospho-S6 Ribosomal protein (Ser240/244) antibody) at dilution of 1:16000 incubated at room temperature for 1.5 hours. The membrane was stripped and re-blotted with GAPDH antibody as the loading control.