

À des fins de recherche uniquement

# Anticorps Recombinant de lapin anti-GRB10



Numéro de catalogue: 81225-1-RR

## Informations de base

Numéro de catalogue:	81225-1-RR	Numéro d'acquisition GenBank:	BC024285	Méthode de purification:	Purification par protéine A
Taille:	100ul, Concentration: 1000 µg/ml by Nanodrop;	Identification du gène (NCBI):	2887	CloneNo.:	1D13
Hôte:	Lapin	Nom complet:	growth factor receptor-bound protein 10	Dilutions recommandées:	WB 1:5000-1:50000 IF 1:500-1:2000
Isotype:	IgG	MW calculé	536aa,61 kDa; 594aa,67 kDa		
Immunogen Catalog Number:	AG20355	MW observés:	60-70 kDa		

## Applications

Applications testées:	IF, WB, ELISA	Contrôles positifs:	WB : cellules PC-3, cellules HSC-T6, cellules NIH/3T3 IF : cellules LNCaP,
Spécificité de l'espèce:	Humain, rat, souris		

## Informations générales

GRB10 is an adapter protein which modulates coupling of a number of cell surface receptor kinases with specific signaling pathways. GRB10 has three consensus domains including pleckstrin homology (PH) domain, SH2/SH3 domain and Ras-associating domain. By binding to kinases, GRB10 suppresses signals from activated receptors tyrosine kinases, including INSR and IGF1R. It may play a role in mediating ubiquitination of INSR, leading to proteasomal degradation. GRB10 has 4 isoforms with the molecular mass of 60-70 kDa, which are produced by alternative splicing.

## Stockage

**Stockage:**  
Stocker à -20°C. Stable pendant un an après l'expédition.  
**Tampon de stockage:**  
PBS avec azoture de sodium à 0,02 % et glycérol à 50 % pH 7,3  
L'aliquotage n'est pas nécessaire pour le stockage à -20C

\*\*\* Les 20ul contiennent 0,1% de BSA.

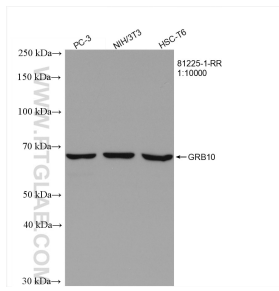
For technical support and original validation data for this product please contact:

T: 1 (888) 4PTGLAB (1-888-478-4522) (toll free in USA), or 1(312) 455-8498 (outside USA)

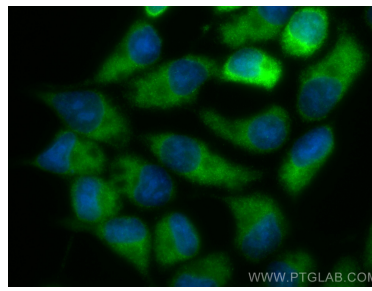
E: [proteintech@ptglab.com](mailto:proteintech@ptglab.com)  
W: [ptglab.com](http://ptglab.com)

This product is exclusively available under Proteintech Group brand and is not available to purchase from any other manufacturer.

## Données de validation sélectionnées



Various lysates were subjected to SDS PAGE followed by western blot with 81225-1-RR (GRB10 antibody) at dilution of 1:10000 incubated at room temperature for 1.5 hours.



Immunofluorescent analysis of (-20°C Methanol) fixed LNCaP cells using GRB10 antibody (81225-1-RR, Clone: 1D13 ) at dilution of 1:1000 and CoraLite®488-Conjugated AffiniPure Goat Anti-Rabbit IgG(H+L).