

À des fins de recherche uniquement

# Anticorps Recombinant de lapin anti-CD3



Numéro de catalogue: 81324-1-RR **Phare**

## Informations de base

<b>Numéro de catalogue:</b> 81324-1-RR	<b>Numéro d'acquisition GenBank:</b> BC049847	<b>Méthode de purification:</b> Purification par protéine A
<b>Taille:</b> 100ul , Concentration: 500 µg/ml by Nanodrop;	<b>Identification du gène (NCBI):</b> 916	<b>CloneNo.:</b> 4I19
<b>Hôte:</b> Lapin	<b>Nom complet:</b> CD3e molécule, epsilon (CD3-TCR complex)	<b>Dilutions recommandées:</b> WB 1:5000-1:50000 IHC 1:5000-1:20000
<b>Isotype:</b> IgG	<b>MW calculé</b> 207 aa, 23 kDa	
<b>Immunogen Catalog Number:</b> AG11797	<b>MW observés:</b> 23-25 kDa	

## Applications

### Applications testées:

IHC, WB, ELISA

### Spécificité de l'espèce:

Humain, porc, rat, souris

**Remarque-IHC: il est suggéré de démasquer l'antigène avec un tampon de TE buffer pH 9,0; (\*) À défaut, 'le démasquage de l'antigène peut être effectué avec un tampon citrate pH 6,0.**

### Contrôles positifs:

WB : cellules Jurkat, cellules MOLT-4, tissu de thymus de porc, tissu de thymus de rat, tissu de thymus de souris

IHC : tissu de côlon humain,

## Informations générales

CD3 is a complex of proteins that directly associates with the T cell receptor (TCR). The TCR/CD3 complex of T-lymphocytes consists of either a TCR alpha/beta or TCR gamma/delta heterodimer coexpressed at the cell surface with the invariant subunits of CD3 labeled gamma, delta, epsilon, zeta, and eta. The TCR recognizes antigens bound to major histocompatibility complex (MHC) molecules. TCR-mediated peptide-MHC recognition is transmitted to the CD3 complex, leading to the intracellular signal transduction. CD3 is considered to be a pan-T cell marker for detection of normal and neoplastic T cells. This anti-CD3 is a monoclonal antibody directed against the epsilon chain of human CD3 molecule.

## Stockage

### Stockage:

Stocker à -20°C. Stable pendant un an après l'expédition.

### Tampon de stockage:

PBS avec azoture de sodium à 0,02 % et glycérol à 50 % pH 7,3

L'aliquotage n'est pas nécessaire pour le stockage à -20C

\*\*\* Les 20ul contiennent 0,1% de BSA.

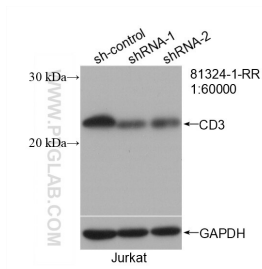
For technical support and original validation data for this product please contact:

T: 1 (888) 4PTGLAB (1-888-478-4522) (toll free in USA), or 1(312) 455-8498 (outside USA)

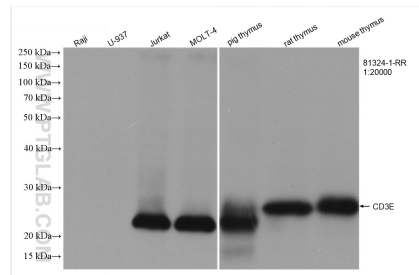
E: proteintech@ptglab.com  
W: ptglab.com

This product is exclusively available under Proteintech Group brand and is not available to purchase from any other manufacturer.

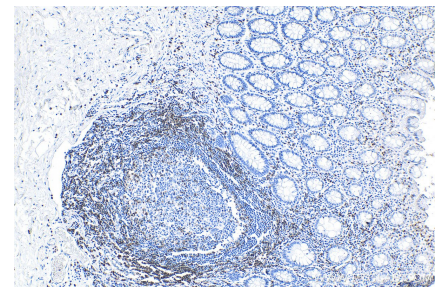
## Données de validation sélectionnées



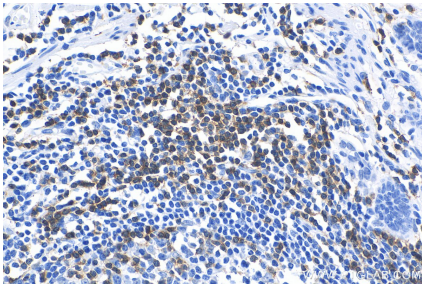
WB result of CD3 antibody (81324-1-RR; 1:60000; incubated at room temperature for 1.5 hours) with sh-Control and sh-CD3 transfected Jurkat cells.



Various lysates were subjected to SDS PAGE followed by western blot with 81324-1-RR (CD3E antibody) at dilution of 1:20000 incubated at room temperature for 1.5 hours.



Immunohistochemical analysis of paraffin-embedded human colon tissue slide using 81324-1-RR (CD3 antibody) at dilution of 1:10000 (under 10x lens). Heat mediated antigen retrieval with Tris-EDTA buffer (pH 9.0).



Immunohistochemical analysis of paraffin-embedded human colon tissue slide using 81324-1-RR (CD3 antibody) at dilution of 1:10000 (under 40x lens). Heat mediated antigen retrieval with Tris-EDTA buffer (pH 9.0).