

À des fins de recherche uniquement

Anticorps Recombinant de lapin anti-YTHDF2



Numéro de catalogue: 81340-1-RR **Phare**

Informations de base

Numéro de catalogue:
81340-1-RR

Taille:
100ul, Concentration: 1000 µg/ml by
Nanodrop;

Hôte:
Lapin

Isotype:
IgG

Immunogen Catalog Number:
AG5922

Numéro d'acquisition GenBank:
BC002559

Identification du gène (NCBI):
51441

Nom complet:
YTH domain family, member 2

MW calculé
62 kDa

MW observés:
65-70 kDa

Méthode de purification:
Purification par protéine A

CloneNo.:
3L6

Dilutions recommandées:
WB 1:5000-1:50000
IP 0.5-4.0 ug for IP and 1:500-1:2000
for WB

Applications

Applications testées:
IP, WB, ELISA

Spécificité de l'espèce:
Humain, rat, souris

Contrôles positifs:

WB : cellules HEK-293, cellules C6, cellules HeLa,
cellules Jurkat, cellules NIH/3T3, cellules Raji,
cellules RAW 264.7

IP : cellules HeLa,

Informations générales

YTHDF2, also named as YTH domain-containing family protein 2, is a 579 amino acid protein, which contains 1 YTH domain. YTHDF2 specifically recognizes and binds N6-methyladenosine (m6A)-containing RNAs, and regulates mRNA stability. M6A is a modification present at internal sites of mRNAs and some non-coding RNAs and plays a role in the efficiency of mRNA splicing, processing and stability. YTHDF2 acts as a regulator of mRNA stability: binding to m6A-containing mRNAs results in the localization to mRNA decay sites, such as processing bodies (P-bodies), leading to mRNA degradation. YTHDF2 also acts as a promoter of cap-independent mRNA translation following heat shock stress: upon stress, relocalizes to the nucleus and specifically binds mRNAs with some m6A methylation mark at their 5'-UTR, protecting demethylation of mRNAs by FTO, thereby promoting cap-independent mRNA translation. The calculated molecular weight of YTHDF2 is 62 kDa, but the phosphorylated YTHDF2 is about 65-70 kDa.

Stockage

Stockage:

Stocker à -20°C. Stable pendant un an après l'expédition.

Tampon de stockage:

PBS avec azoture de sodium à 0,02 % et glycérol à 50 % pH 7,3

L'aliquotage n'est pas nécessaire pour le stockage à -20C

*** Les 20ul contiennent 0,1% de BSA.

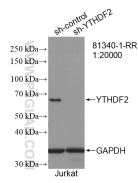
For technical support and original validation data for this product please contact:

T: 1 (888) 4PTGLAB (1-888-478-4522) (toll free
in USA), or 1(312) 455-8498 (outside USA)

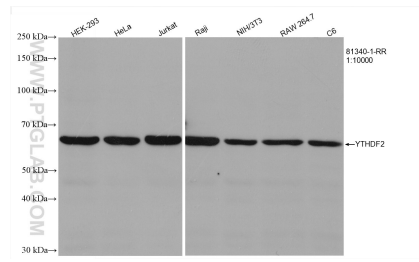
E: proteintech@ptglab.com
W: ptglab.com

This product is exclusively available under Proteintech Group brand and is not available to purchase from any other manufacturer.

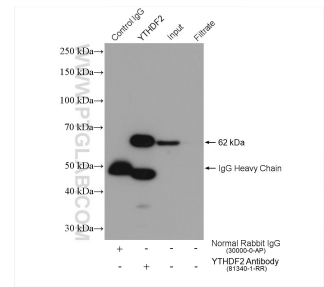
Données de validation sélectionnées



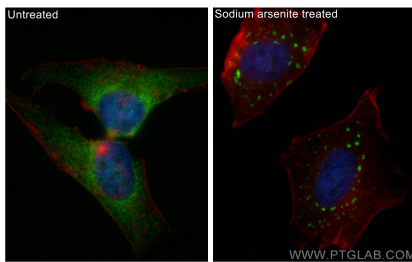
WB result of YTHDF2 antibody (81340-1-RR; 1:20000; incubated at room temperature for 1.5 hours) with sh-Control and sh-YTHDF2 transfected Jurkat cells.



Various lysates were subjected to SDS PAGE followed by western blot with 81340-1-RR (YTHDF2 antibody) at dilution of 1:10000 incubated at room temperature for 1.5 hours.



IP result of anti-YTHDF2(IP:81340-1-RR, 4ug; Detection:81340-1-RR 1:1000) with HeLa cells lysate 1880 ug.



Immunofluorescent analysis of (4% PFA) fixed sodium arsenite treated HeLa cells using YTHDF2 antibody (81340-1-RR, Clone: 3L6) at dilution of 1:1000 and CoraLite@488-Conjugated AffiniPure Goat Anti-Rabbit IgG(H+L), CL594-Phalloidine (red).