

À des fins de recherche uniquement

Anticorps Recombinant de lapin anti-EEF1A1



Numéro de catalogue: 81377-1-RR

Informations de base

Numéro de catalogue: 81377-1-RR	Numéro d'acquisition GenBank: BC014224	Méthode de purification: Purification par protéine A
Taille: 100ul , Concentration: 250 µg/ml by Nanodrop;	Identification du gène (NCBI): 1915	CloneNo.: 2B16
Hôte: Lapin	Nom complet: eukaryotic translation elongation factor 1 alpha 1	Dilutions recommandées: WB 1:5000-1:50000 IP 0.5-4.0 ug for IP and 1:2000-1:16000 for WB
Isotype: IgG	MW calculé 462 aa, 50 kDa	IHC 1:250-1:1000 IF 1:200-1:800
Immunogen Catalog Number: AG1938	MW observés: 50 kDa	

Applications

Applications testées:

IF, IHC, IP, WB, ELISA

Spécificité de l'espèce:

Humain, rat, souris

Remarque-IHC: il est suggéré de démasquer l'antigène avec un tampon de TE buffer pH 9,0; (*) À défaut, 'le démasquage de l'antigène peut être effectué avec un tampon citrate pH 6,0.

Contrôles positifs:

WB : cellules HEK-293, cellules HeLa, cellules HepG2, cellules HSC-T6, cellules Jurkat, cellules K-562, cellules NIH/3T3

IP : cellules HeLa,

IHC : tissu cérébral de souris, tissu de cancer du pancréas humain

IF : cellules HepG2,

Informations générales

EEF1A1, also named as EEF1A, EF1A and LENG7, belongs to the GTP-binding elongation factor family. This protein promotes the GTP-dependent binding of aminoacyl-tRNA to the A-site of ribosomes during protein biosynthesis. It is a typical housekeeping gene product required for the maintenance of cell proliferation and/or survival. In addition, EEF1A1 protects the aminoester bond against hydrolysis until a correct match between the codon on mRNA and the anti-codon on tRNA can be achieved.

Stockage

Stockage:

Stocker à -20°C. Stable pendant un an après l'expédition.

Tampon de stockage:

PBS avec azoture de sodium à 0,02 % et glycérol à 50 % pH 7,3

L'aliquotage n'est pas nécessaire pour le stockage à -20C

***** Les 20ul contiennent 0,1% de BSA.**

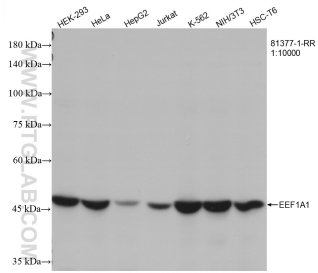
For technical support and original validation data for this product please contact:

T: 1 (888) 4PTGLAB (1-888-478-4522) (toll free in USA), or 1(312) 455-8498 (outside USA)

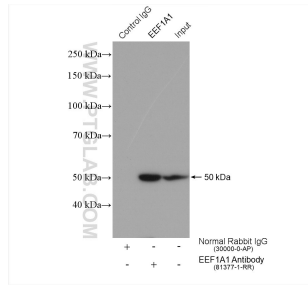
E: proteintech@ptglab.com
W: ptglab.com

This product is exclusively available under Proteintech Group brand and is not available to purchase from any other manufacturer.

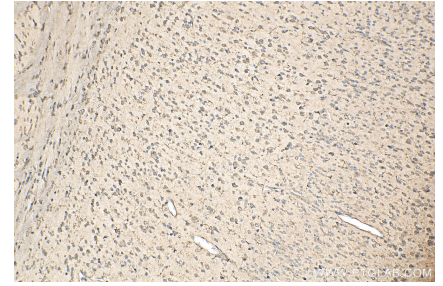
Données de validation sélectionnées



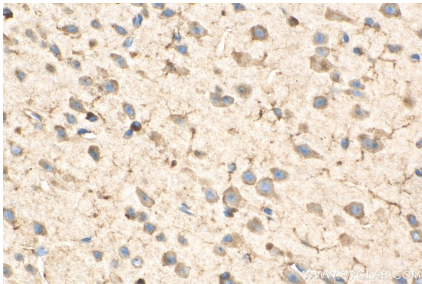
Various lysates were subjected to SDS PAGE followed by western blot with 81377-1-RR (EEF1A1 antibody) at dilution of 1:12000 incubated at room temperature for 1.5 hours.



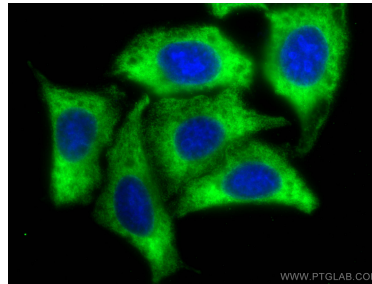
IP result of anti-EEF1A1(IP:81377-1-RR, 4ug; Detection:81377-1-RR 1:8000) with HeLa cells lysate 1720 ug.



Immunohistochemical analysis of paraffin-embedded mouse brain tissue slide using 81377-1-RR (EEF1A1 antibody) at dilution of 1:500 (under 10x lens). Heat mediated antigen retrieval with Tris-EDTA buffer (pH 9.0).



Immunohistochemical analysis of paraffin-embedded mouse brain tissue slide using 81377-1-RR (EEF1A1 antibody) at dilution of 1:500 (under 40x lens). Heat mediated antigen retrieval with Tris-EDTA buffer (pH 9.0).



Immunofluorescent analysis of (-20°C Methanol) fixed HepG2 cells using EEF1A1 antibody (81377-1-RR, Clone: 2B16) at dilution of 1:400 and CoraLite® 488-Conjugated AffiniPure Goat Anti-Rabbit IgG(H+L).