

À des fins de recherche uniquement

# Anticorps Recombinant de lapin anti-Phospho-TAU (Ser404)



Numéro de catalogue: 81383-1-RR

## Informations de base

Numéro de catalogue: 81383-1-RR	Numéro d'acquisition GenBank: BC000558	Méthode de purification: Purification par protéine A
Taille: 100ul , Concentration: 400 µg/ml by Nanodrop;	Identification du gène (NCBI): 4137	CloneNo.: 5I16
Hôte: Lapin	Nom complet: microtubule-associated protein tau	Dilutions recommandées: WB 1:5000-1:50000
Isotype: IgG	MW calculé 37-46, 79-81 kDa	
	MW observés: 45-55 kDa	

## Applications

Applications testées: WB, ELISA	Contrôles positifs: WB : tissu cérébral de souris, λ phosphatase treated mouse brain tissue
Spécificité de l'espèce: Humain, souris	

## Informations générales

Tau (tubulin-associated unit) is a microtubule-associated protein (also known as MAPT), expressed mainly in neurons of the central nervous system. Its primary function is to modulate microtubule dynamics for maintaining axonal cytoskeleton. The Tau protein has six isoforms produced from a single gene through alternative RNA splicing. Isoforms differ in number of inserts at the N-terminal half and the number of repeats at the C-terminal half (3 repeat-3R; 4 repeat-4R). Tau is hyperphosphorylated during aging and in age-related neurodegenerative diseases such as Alzheimer's disease (AD) and fronto-temporal dementia. Hyperphosphorylation of Tau leads to the formation of neurofibrillary tangles (NFT) in the neurons and glia cells, which is one of the hallmarks of AD.

## Stockage

**Stockage:**  
Stocker à -20°C. Stable pendant un an après l'expédition.  
**Tampon de stockage:**  
PBS avec azoture de sodium à 0,02 % et glycérol à 50 % pH 7,3  
L'aliquotage n'est pas nécessaire pour le stockage à -20C

\*\*\* Les 20ul contiennent 0,1% de BSA.

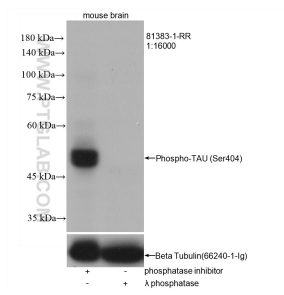
For technical support and original validation data for this product please contact:

T: 1 (888) 4PTGLAB (1-888-478-4522) (toll free  
in USA), or 1(312) 455-8498 (outside USA)

E: [proteintech@ptglab.com](mailto:proteintech@ptglab.com)  
W: [ptglab.com](http://ptglab.com)

This product is exclusively available under Proteintech Group brand and is not available to purchase from any other manufacturer.

## Données de validation sélectionnées



Phosphatase inhibitor treated and  $\lambda$  phosphatase treated mouse brain tissue were subjected to SDS PAGE followed by western blot with 81383-1-RR (Phospho-TAU (Ser404) antibody) at dilution of 1:16000 incubated at room temperature for 1 hours. The membrane was stripped and re-blotted with Beta Tubulin antibody as loading control.