

À des fins de recherche uniquement

Anticorps Recombinant de lapin anti-Phospho-SMAD1 (Ser214)



Numéro de catalogue: 81433-1-RR

Informations de base

Numéro de catalogue: 81433-1-RR	Numéro d'acquisition GenBank: BC001878	Méthode de purification: Purification par protéine A
Taille: 100ul , Concentration: 800 µg/ml by Nanodrop;	Identification du gène (NCBI): 4086	CloneNo.: 3K8
Hôte: Lapin	Nom complet: SMAD family member 1	Dilutions recommandées: WB 1:2000-1:16800
Isotype: IgG	MW calculé 52 kDa	
	MW observés: 52 kDa	

Applications

Applications testées:
WB, ELISA
Spécificité de l'espèce:
Humain, souris

Contrôles positifs:

WB : cellules A431 traitées aux UV, cellules HepG2 traitées à la calyculine A, cellules NIH/3T3 traitées au UV

Informations générales

SMAD family member 1 (Smad1) have been involved in metastatic progression of many cancer types. Smad1 can be induced by many tumor-stimulating cytokines such as the bone morphogenetic protein 2 (BMP2) and TNF α and plays important roles in cell invasion and metastasis. BMP2 signalling is initiated by binding to its specific receptors, which leads to in the phosphorylation and nuclear translocation of Smad1. Translocated Smad1 then modulates the expression of downstream osteogenic genes. (PMID: 32954678, PMID: 30008908)

Stockage

Stockage:
Stocker à -20°C. Stable pendant un an après l'expédition.
Tampon de stockage:
PBS avec azoture de sodium à 0,02 % et glycérol à 50 % pH 7,3
L'aliquotage n'est pas nécessaire pour le stockage à -20C

*** Les 20ul contiennent 0,1% de BSA.

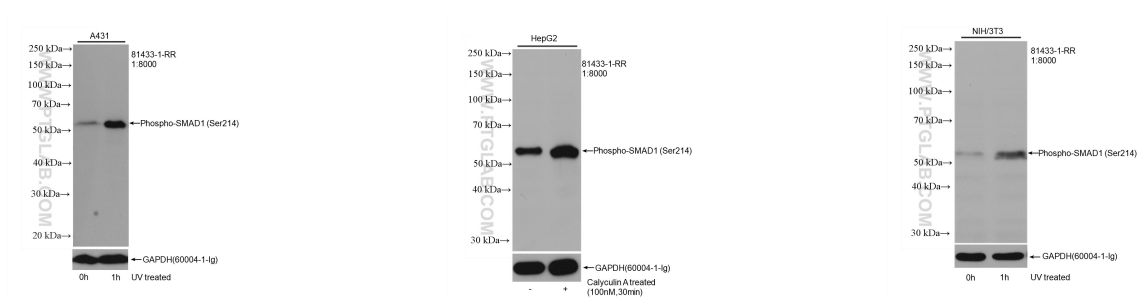
For technical support and original validation data for this product please contact:

T: 1 (888) 4PTGLAB (1-888-478-4522) (toll free
in USA), or 1(312) 455-8498 (outside USA)

E: proteintech@ptglab.com
W: ptglab.com

This product is exclusively available under Proteintech Group brand and is not available to purchase from any other manufacturer.

Données de validation sélectionnées



Non-treated and UV treated A431 cells were subjected to SDS PAGE followed by western blot with 81433-1-RR (Phospho-SMAD1 (Ser214) antibody) at dilution of 1:8000 incubated at room temperature for 1.5 hours. The membrane was stripped and re-blotted with GAPDH antibody as loading control.

Non-treated and Calyculin A treated HepG2 cells were subjected to SDS PAGE followed by western blot with 81433-1-RR (Phospho-SMAD1 (Ser214) antibody) at dilution of 1:8000 incubated at room temperature for 1.5 hours. The membrane was stripped and re-blotted with GAPDH antibody as loading control.

Non-treated and UV treated NIH/3T3 cells were subjected to SDS PAGE followed by western blot with 81433-1-RR (Phospho-SMAD1 (Ser214) antibody) at dilution of 1:8000 incubated at room temperature for 1.5 hours. The membrane was stripped and re-blotted with GAPDH antibody as loading control.