

À des fins de recherche uniquement

# Anticorps Recombinant de lapin anti-GLUT1



Numéro de catalogue: 81463-1-RR

1 Publications

## Informations de base

<b>Numéro de catalogue:</b> 81463-1-RR	<b>Numéro d'acquisition GenBank:</b> BC121804	<b>Méthode de purification:</b> Purification par protéine A
<b>Taille:</b> 100ul , Concentration: 1000 µg/ml by Nanodrop;	<b>Identification du gène (NCBI):</b> 6513	<b>CloneNo.:</b> 6F14
<b>Hôte:</b> Lapin	<b>Nom complet:</b> solute carrier family 2 (facilitated glucose transporter), member 1	<b>Dilutions recommandées:</b> WB 1:5000-1:50000
<b>Isotype:</b> IgG	<b>MW calculé</b> 492 aa, 54 kDa	
<b>Immunogen Catalog Number:</b> AG16282	<b>MW observés:</b> 45-55 kDa	

## Applications

<b>Applications testées:</b> WB, ELISA	<b>Contrôles positifs:</b> WB : cellules HEK-293 non bouillies, HeLa cells (incubated at 37°C)
<b>Demandes citées:</b> WB	
<b>Spécificité de l'espèce:</b> Humain	
<b>Espèces citées:</b> Humain	

## Informations générales

GLUT1, also known as SLC2A1, is a ubiquitously expressed glucose transporter and is responsible for the basal level of glucose uptake in most cell types. Human erythrocytes express the highest level of GLUT1. Defects in SLC2A1 are the cause of GLUT1 deficiency syndrome type 1 and type 2. High expression of GLUT1 has been reported to be a reliable immunohistochemical marker for juvenile hemangiomas. GLUT1 protein may appear as two or more distinct forms among 43 kDa to 55 kDa due to the different glycosylation states. And the conversion of the highly glycosylated form of GLUT1 to a less glycosylated form has been reported to correlate with differentiation (PMID: 8263524, 23302780).

## Publications notables

Autrice	Pubmed ID	Journal	Application
Jiajin Li	37311977	Br J Cancer	WB

## Stockage

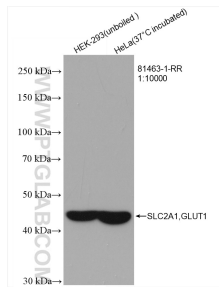
**Stockage:**  
Stocker à -20°C. Stable pendant un an après l'expédition.  
**Tampon de stockage:**  
PBS avec azoture de sodium à 0,02 % et glycérol à 50 % pH 7,3  
L'aliquotage n'est pas nécessaire pour le stockage à -20C

\*\*\* Les 20ul contiennent 0,1% de BSA.

For technical support and original validation data for this product please contact:  
T: 1 (888) 4PTGLAB (1-888-478-4522) (toll free in USA), or 1(312) 455-8498 (outside USA)  
E: proteintech@ptglab.com  
W: ptglab.com

This product is exclusively available under Proteintech Group brand and is not available to purchase from any other manufacturer.

## Données de validation sélectionnées



Various lysates were subjected to SDS PAGE followed by western blot with 81463-1-RR (SLC2A1, GLUT1 antibody) at dilution of 1:10000 incubated at room temperature for 1.5 hours.