

À des fins de recherche uniquement

# Anticorps Recombinant de lapin anti-Phospho-RPS6KA1 (Thr359/Ser363)



Numéro de catalogue:81475-1-RR

## Informations de base

Numéro de catalogue: 81475-1-RR	Numéro d'acquisition GenBank: BC014966	Méthode de purification: Purification par protéine A
Taille: 100ul , Concentration: 500 µg/ml by Nanodrop;	Identification du gène (NCBI): 6195	CloneNo.: 3O10
Hôte: Lapin	Nom complet: ribosomal protein S6 kinase, 90kDa, polypeptide 1	Dilutions recommandées: WB 1:5000-1:50000
Isotype: IgG	MW calculé 735 aa, 83 kDa	
	MW observés: 83-90 kDa	

## Applications

Applications testées:  
WB, ELISA  
Spécificité de l'espèce:  
Humain, souris

Contrôles positifs:  
WB : cellules HeLa, cellules HeLa traitées à la λ  
phosphatase

## Informations générales

The 90 kDa ribosomal S6 kinases (RSK1-4) are a family of widely expressed serine/threonine kinases and play an important role in the MAPK signaling cascade and act downstream of ERK1/2 signaling. It can mediate mitogenic and stress-induced activation of the transcription factors CREB1, ETV1/ER81 and NR4A1/NUR77. RSK1 (RPS6KA1) is also designated as p90RSK associated with cellular proliferation, survival and differentiation. RPS6KA1 has some phosphorylation sites including Ser380, Thr359 and Ser363 which are important for kinase activation. (PMID: 16458888, 30813401, 17259979, 10679322)

## Stockage

Stockage:  
Stocker à -20°C. Stable pendant un an après l'expédition.  
Tampon de stockage:  
PBS avec azoture de sodium à 0,02 % et glycérol à 50 % pH 7,3  
L'aliquotage n'est pas nécessaire pour le stockage à -20C

\*\*\* Les 20ul contiennent 0,1% de BSA.

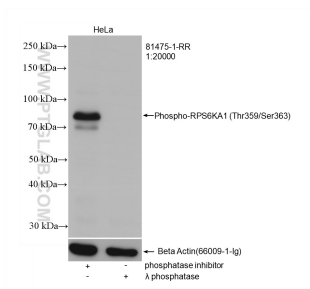
For technical support and original validation data for this product please contact:

T: 1 (888) 4PTGLAB (1-888-478-4522) (toll free  
in USA), or 1(312) 455-8498 (outside USA)

E: [proteintech@ptglab.com](mailto:proteintech@ptglab.com)  
W: [ptglab.com](http://ptglab.com)

This product is exclusively available under Proteintech Group brand and is not available to purchase from any other manufacturer.

## Données de validation sélectionnées



Non-treated and  $\lambda$  phosphatase treated HeLa cells were subjected to SDS PAGE followed by western blot with 81475-1-RR (Phospho-RPS6KA1 (Thr359/Ser363) antibody) at dilution of 1:20000 incubated at room temperature for 1.5 hours. The membrane was stripped and re-blotted with Beta-Tubulin (66009-1-Ig) as loading control.