

À des fins de recherche uniquement

Anticorps Recombinant de lapin anti-Caspase 1



Numéro de catalogue: 81482-1-RR

3 Publications

Informations de base

Numéro de catalogue: 81482-1-RR	Numéro d'acquisition GenBank: BC062327	Méthode de purification: Purification par protéine A
Taille: 100ul , Concentration: 1000 µg/ml by Nanodrop;	Identification du gène (NCBI): 834	CloneNo.: 1018
Hôte: Lapin	Nom complet: caspase 1, apoptosis-related cysteine peptidase (interleukin 1, beta, convertase)	Dilutions recommandées: WB 1:5000-1:50000
Isotype: IgG	MW calculé 404 aa, 45 kDa	
Immunogen Catalog Number: AG11143	MW observés: 30 kDa, 35 kDa, 43-45 kDa	

Applications

Applications testées: WB, ELISA	Contrôles positifs: WB : cellules Raji, cellules THP-1, cellules U-937
Demandes citées: IF, WB	
Spécificité de l'espèce: Humain	
Espèces citées: rat, souris	

Informations générales

CASP1(caspase-1) is also named as IL1BC, IL1BCE and belongs to the peptidase C14A family. It is a cysteine protease that regulates inflammatory processes through its capacity to process and activate the interleukin-1-beta (IL1B), IL18, and IL33 precursor proteins. The active caspase-1 can increase cellular membrane permeability and intracellular calcium levels, which facilitates lysosome exocytosis and release of host antimicrobial factors and microbial products (PMID:21804020). It has 5 isoforms produced by alternative splicing. 81482-1-RR can recognize the splicing isoforms of caspase 1.

Publications notables

Autrice	Pubmed ID	Journal	Application
Jingfei Zhang	36290717	Antioxydants (Basel)	WB
Lulu Tang	37530936	Apoptosis	WB
Dong Wang	37523835	Phytomedicine	WB,IF

Stockage

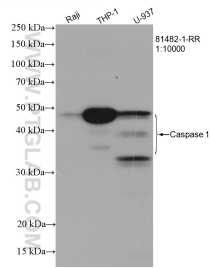
Stockage:
Stocker à -20°C. Stable pendant un an après l'expédition.
Tampon de stockage:
PBS avec azoture de sodium à 0,02 % et glycérol à 50 % pH 7,3
L'aliquotage n'est pas nécessaire pour le stockage à -20C

*** Les 20ul contiennent 0,1% de BSA.

For technical support and original validation data for this product please contact:
T: 1 (888) 4PTGLAB (1-888-478-4522) (toll free in USA), or 1(312) 455-8498 (outside USA)
E: proteintech@ptglab.com
W: ptglab.com

This product is exclusively available under Proteintech Group brand and is not available to purchase from any other manufacturer.

Données de validation sélectionnées



Various lysates were subjected to SDS PAGE followed by western blot with 81482-1-RR (Caspase 1 antibody) at dilution of 1:10000 incubated at room temperature for 1.5 hours.