

À des fins de recherche uniquement

# Anticorps Recombinant de lapin anti-GSTK1



Numéro de catalogue: 81527-1-RR

## Informations de base

Numéro de catalogue: 81527-1-RR	Numéro d'acquisition GenBank: BC050715	Méthode de purification: Purification par protéine A
Taille: 100ul, Concentration: 250 µg/ml by Nanodrop;	Identification du gène (NCBI): 373156	CloneNo.: 3J1
Hôte: Lapin	Nom complet: glutathione S-transferase kappa 1	Dilutions recommandées: WB 1:5000-1:50000 IHC 1:50-1:500 IF 1:250-1:1000
Isotype: IgG	MW calculé 32 kDa	
Immunogen Catalog Number: AG6036	MW observés: 27 kDa	

## Applications

Applications testées:  
IF, IHC, WB, ELISA

Spécificité de l'espèce:  
Humain, rat, souris

**Remarque-IHC: il est suggéré de démasquer l'antigène avec un tampon de TE buffer pH 9,0; (\*) À défaut, 'le démasquage de l'antigène peut être effectué avec un tampon citrate pH 6,0.**

Contrôles positifs:

WB : cellules HEK-293, cellules Daudi, cellules HeLa, cellules HepG2, cellules L02, cellules Raji

IHC : tissu de cancer du foie humain, tissu testiculaire de souris

IF : cellules HeLa,

## Informations générales

GSTK1, glutathione S-transferase kappa 1, belongs to the superfamily of glutathione S-transferase (GST), which is related to oxidative stress (PMID:16081649). GSTK1 expression is negatively correlated with obesity and hypertrophic cardiomyopathy (PMID:21428694, PMID:27378925). GSTK1 was expressed in the peroxisomal and mitochondrial fractions and localized to peroxisomes (PubMed:14742434).

## Stockage

Stockage:

Stocker à -20°C. Stable pendant un an après l'expédition.

Tampon de stockage:

PBS avec azoture de sodium à 0,02 % et glycérol à 50 % pH 7,3

L'aliquotage n'est pas nécessaire pour le stockage à -20C

\*\*\* Les 20ul contiennent 0,1% de BSA.

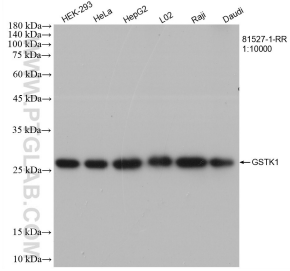
For technical support and original validation data for this product please contact:

T: 1 (888) 4PTGLAB (1-888-478-4522) (toll free in USA), or 1(312) 455-8498 (outside USA)

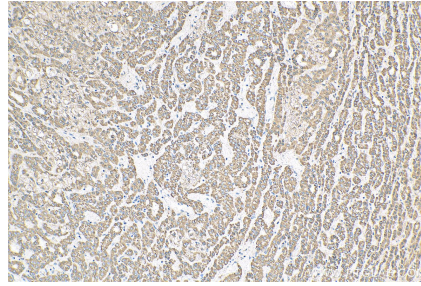
E: proteintech@ptglab.com  
W: ptglab.com

This product is exclusively available under Proteintech Group brand and is not available to purchase from any other manufacturer.

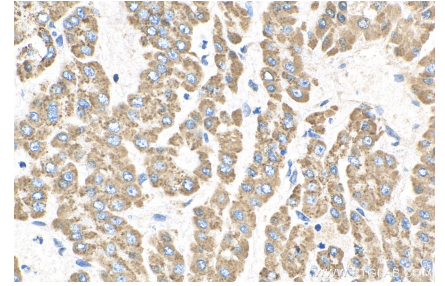
## Données de validation sélectionnées



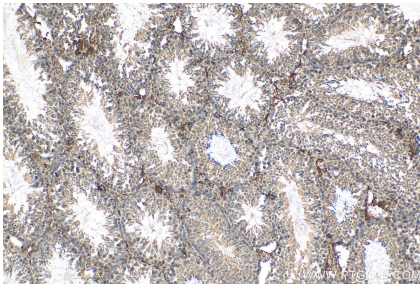
Various lysates were subjected to SDS PAGE followed by western blot with 81527-1-RR (GSTK1 antibody) at dilution of 1:10000 incubated at room temperature for 1.5 hours.



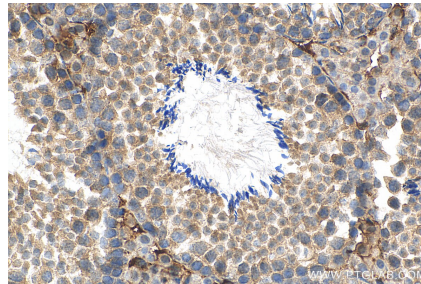
Immunohistochemical analysis of paraffin-embedded human liver cancer tissue slide using 81527-1-RR (GSTK1 antibody) at dilution of 1:200 (under 10x lens). Heat mediated antigen retrieval with Tris-EDTA buffer (pH 9.0).



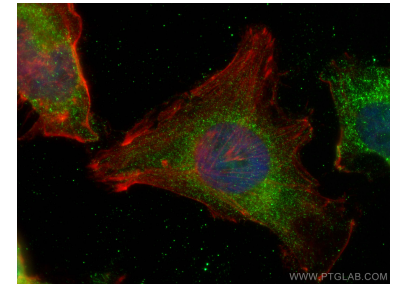
Immunohistochemical analysis of paraffin-embedded human liver cancer tissue slide using 81527-1-RR (GSTK1 antibody) at dilution of 1:200 (under 40x lens). Heat mediated antigen retrieval with Tris-EDTA buffer (pH 9.0).



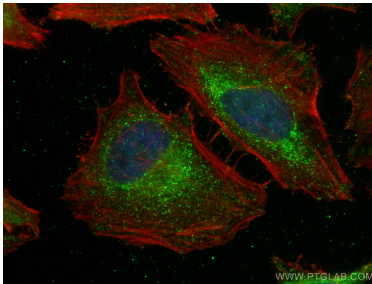
Immunohistochemical analysis of paraffin-embedded mouse testis tissue slide using 81527-1-RR (GSTK1 antibody) at dilution of 1:200 (under 10x lens). Heat mediated antigen retrieval with Tris-EDTA buffer (pH 9.0).



Immunohistochemical analysis of paraffin-embedded mouse testis tissue slide using 81527-1-RR (GSTK1 antibody) at dilution of 1:200 (under 40x lens). Heat mediated antigen retrieval with Tris-EDTA buffer (pH 9.0).



Immunofluorescent analysis of (4% PFA) fixed HeLa cells using GSTK1 antibody (81527-1-RR, Clone: 3J1) at dilution of 1:500 and CoraLite®488-Conjugated AffiniPure Goat Anti-Rabbit IgG(H+L), CL594-Phalloidin (red).



Immunofluorescent analysis of (4% PFA) fixed HeLa cells using GSTK1 antibody (81527-1-RR, Clone: 3J1) at dilution of 1:500 and CoraLite®488-Conjugated AffiniPure Goat Anti-Rabbit IgG(H+L), CL594-Phalloidin (red).