

À des fins de recherche uniquement

# Anticorps Recombinant de lapin anti-DRP1 (C-terminal)



Numéro de catalogue:81561-1-RR

## Informations de base

Numéro de catalogue: 81561-1-RR	Numéro d'acquisition GenBank: BC024590	Méthode de purification: Purification par protéine A
Taille: 100ul , Concentration: 1000 µg/ml by Nanodrop;	Identification du gène (NCBI): 10059	CloneNo.: 2A19
Hôte: Lapin	Nom complet: dynamin 1-like	Dilutions recommandées: WB 1:5000-1:50000 IF 1:200-1:800
Isotype: IgG	MW calculé 710 aa, 79 kDa	
Immunogen Catalog Number: AG3644	MW observés: 70-80 kDa	

## Applications

Applications testées:  
IF, WB, ELISA

Spécificité de l'espèce:  
Humain, rat, souris

Contrôles positifs:

WB : cellules HeLa, cellules A549, cellules HCT 116, cellules NIH/3T3, cellules PC-12, tissu cérébral de rat, tissu cérébral de souris

IF : cellules NIH/3T3,

## Informations générales

DNM1L(Dynamin-1-like protein) , also known as dynamin-related protein 1 (DRP1), belongs to the dynamin family of large GTPases that mediate membrane remodeling during a variety of cellular processes. DNM1L has an important role in the division of growing mitochondria and peroxisomes and also mediates outer mitochondrial membrane fission in mammalian cells. DNM1L is ubiquitously expressed with abundant expression in skeletal muscle, heart, kidney and brain.Variable isoforms of DNM1L have been reported in a tissue-specific manner due to the alternative splicing.

## Stockage

Stockage:

Stocker à -20°C. Stable pendant un an après l'expédition.

Tampon de stockage:

PBS avec azoture de sodium à 0,02 % et glycérol à 50 % pH 7,3

L'aliquotage n'est pas nécessaire pour le stockage à -20C

\*\*\* Les 20ul contiennent 0,1% de BSA.

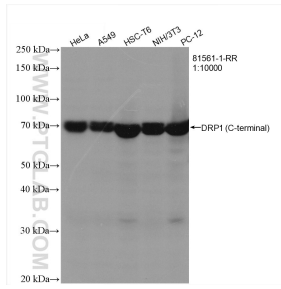
For technical support and original validation data for this product please contact:

T: 1 (888) 4PTGLAB (1-888-478-4522) (toll free  
in USA), or 1(312) 455-8498 (outside USA)

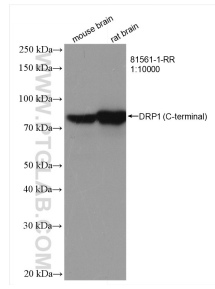
E: [proteintech@ptglab.com](mailto:proteintech@ptglab.com)  
W: [ptglab.com](http://ptglab.com)

This product is exclusively available under Proteintech Group brand and is not available to purchase from any other manufacturer.

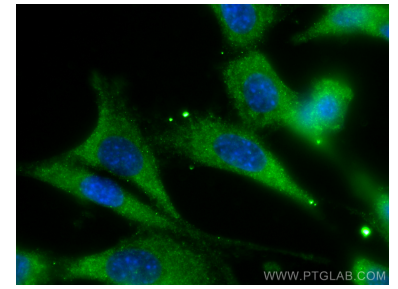
## Données de validation sélectionnées



Various lysates were subjected to SDS PAGE followed by western blot with 81561-1-RR (DRP1 (C-terminal) antibody) at dilution of 1:10000 incubated at room temperature for 1.5 hours.



Various lysates were subjected to SDS PAGE followed by western blot with 81561-1-RR (DRP1 (C-terminal) antibody) at dilution of 1:10000 incubated at room temperature for 1.5 hours.



Immunofluorescent analysis of (-20°C Methanol) fixed NIH/3T3 cells using DRP1 (C-terminal) antibody (81561-1-RR, Clone: 2A19) at dilution of 1:400 and CoraLite®488-Conjugated AffiniPure Goat Anti-Rabbit IgG(H+L).