

À des fins de recherche uniquement

# Anticorps Recombinant de lapin anti-FKBP10/FKBP65



Numéro de catalogue:81567-1-RR

## Informations de base

|   |  |  |
|---|--|--|
| Numéro de catalogue:<br>81567-1-RR                          | Numéro d'acquisition GenBank:<br>BC016467        | Méthode de purification:<br>Purification par protéine A        |
| Taille:<br>100ul , Concentration: 500 µg/ml by<br>Nanodrop; | Identification du gène (NCBI):<br>60681          | CloneNo.:<br>S94   |
| Hôte:<br>Lapin  | Nom complet:<br>FK506 binding protein 10, 65 kDa | Dilutions recommandées:<br>WB 1:2000-1:11800<br>IHC 1:50-1:500 |
| Isotype:<br>IgG   | MW calculé<br>582 aa, 64 kDa                     |  |
| Immunogen Catalog Number:<br>AG2814                         | MW observés:<br>65-70 kDa                        |  |

## Applications

### Applications testées:

IHC, WB, ELISA

### Spécificité de l'espèce:

Humain

**Remarque-IHC: il est suggéré de démasquer l'antigène avec un tampon de TE buffer pH 9,0; (\*) À défaut, 'le démasquage de l'antigène peut être effectué avec un tampon citrate pH 6,0.**

### Contrôles positifs:

WB : cellules HEK-293, cellules A375, cellules HeLa

IHC : tissu de tumeur ovarienne humain,

## Informations générales

FKBP10, also known as FKBP65, is a 65 kDa FK506 binding protein that is a member of the FKBP-type peptidyl-prolyl cis/trans isomerase family. This protein localizes to the endoplasmic reticulum and acts as a molecular chaperone and binding partner of type I collagen. FKBP65 is expressed in developing tissues and re-expressed in adult tissues following injury. As documented, FKBP10 has been detected to play important roles in the initiation and progression of cancers.

## Stockage

### Stockage:

Stocker à -20°C. Stable pendant un an après l'expédition.

### Tampon de stockage:

PBS avec azoture de sodium à 0,02 % et glycérol à 50 % pH 7,3

L'aliquotage n'est pas nécessaire pour le stockage à -20C

\*\*\* Les 20ul contiennent 0,1% de BSA.

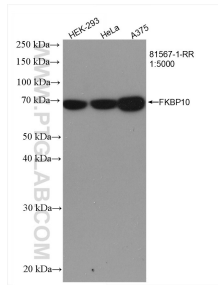
For technical support and original validation data for this product please contact:

T: 1 (888) 4PTGLAB (1-888-478-4522) (toll free  
in USA), or 1(312) 455-8498 (outside USA)

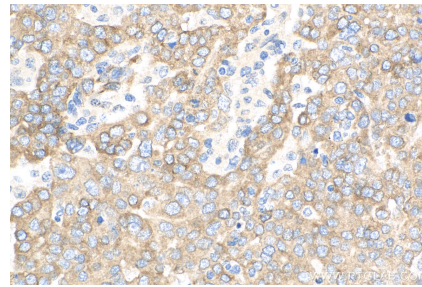
E: [proteintech@ptglab.com](mailto:proteintech@ptglab.com)  
W: [ptglab.com](http://ptglab.com)

This product is exclusively available under Proteintech Group brand and is not available to purchase from any other manufacturer.

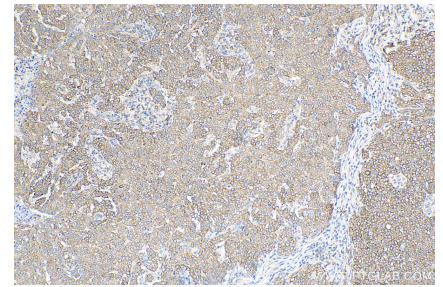
## Données de validation sélectionnées



Various lysates were subjected to SDS PAGE followed by western blot with 81567-1-RR (FKBP10/FKBP65 antibody) at dilution of 1:5000 incubated at room temperature for 1.5 hours.



Immunohistochemical analysis of paraffin-embedded human ovary tumor tissue slide using 81567-1-RR (FKBP10/FKBP65 antibody) at dilution of 1:200 (under 40x lens). Heat mediated antigen retrieval with Tris-EDTA buffer (pH 9.0).



Immunohistochemical analysis of paraffin-embedded human ovary tumor tissue slide using 81567-1-RR (FKBP10/FKBP65 antibody) at dilution of 1:200 (under 10x lens). Heat mediated antigen retrieval with Tris-EDTA buffer (pH 9.0).