

À des fins de recherche uniquement

# Anticorps Recombinant de lapin anti-DMT1



Numéro de catalogue:81609-1-RR

## Informations de base

<b>Numéro de catalogue:</b> 81609-1-RR	<b>Numéro d'acquisition GenBank:</b> BC002592	<b>Méthode de purification:</b> Purification par protéine A
<b>Taille:</b> 100ul , Concentration: 1000 µg/ml by Nanodrop;	<b>Identification du gène (NCBI):</b> 4891	<b>CloneNo.:</b> 1113
<b>Hôte:</b> Lapin	<b>Nom complet:</b> solute carrier family 11 (proton-coupled divalent metal ion transporters), member 2	<b>Dilutions recommandées:</b> WB 1:5000-1:50000 IP 0.5-4.0 ug for IP and 1:1000-1:4000 for WB
<b>Isotype:</b> IgG	<b>MW calculé</b> 568 aa, 62 kDa	
<b>Immunogen Catalog Number:</b> AG14314	<b>MW observés:</b> 70 kDa	

## Applications

**Applications testées:**  
IP, WB, ELISA

**Spécificité de l'espèce:**  
Humain, rat, souris

### Contrôles positifs:

**WB :** cellules HeLa, cellules Caco-2, cellules HEK-293, cellules HepG2, cellules HSC-T6, cellules HuH-7, cellules Neuro-2a

**IP :** cellules HEK-293,

## Informations générales

SLC11A2 (also known as DMT1, Nramp2, and DCT1) is a member of the divalent cation transporters that plays a central role in iron homeostasis. SLC11A2 is widely expressed in many tissues including brain, kidney, testis, duodenum and placenta. As a membrane protein, SLC11A2 is localized on the apical membrane of enterocytes as well as in transferrin-cycle endosomes. Four isoforms of SLC11A2 exist due to the alternative splicing. They differ at the NH2 and COOH termini but share a common central domain. A variety of molecular weights of SLC11A2 in western blot analysis, ranging from 50 to 100 kDa, has been reported in different cells and species. The differences in molecular weights may be attributed to the level of glycosylation, proteolysis, or the membrane protein itself. This antibody detected various forms of SLC11A2 of 45-100 kDa.

## Stockage

**Stockage:**  
Stocker à -20°C. Stable pendant un an après l'expédition.

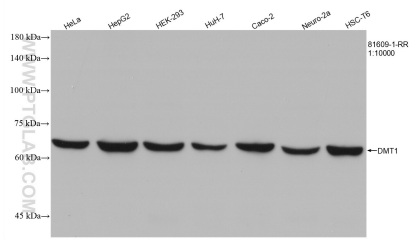
**Tampon de stockage:**  
PBS avec azoture de sodium à 0,02 % et glycérol à 50 % pH 7,3  
L'aliquotage n'est pas nécessaire pour le stockage à -20C

\*\*\* Les 20ul contiennent 0,1% de BSA.

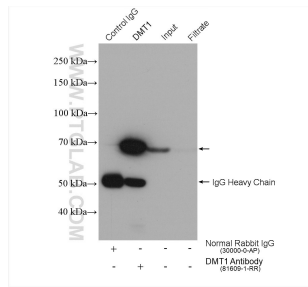
For technical support and original validation data for this product please contact:  
T: 1 (888) 4PTGLAB (1-888-478-4522) (toll free in USA), or 1(312) 455-8498 (outside USA) E: [proteintech@ptglab.com](mailto:proteintech@ptglab.com) W: [ptglab.com](http://ptglab.com)

This product is exclusively available under Proteintech Group brand and is not available to purchase from any other manufacturer.

## Données de validation sélectionnées



Various lysates were subjected to SDS PAGE followed by western blot with 81609-1-RR (DMT1 antibody) at dilution of 1:10000 incubated at room temperature for 1.5 hours.



IP result of anti-DMT1(IP:81609-1-RR, 4ug; Detection:81609-1-RR 1:2000) with HEK-293 cells lysate 1480 ug.